



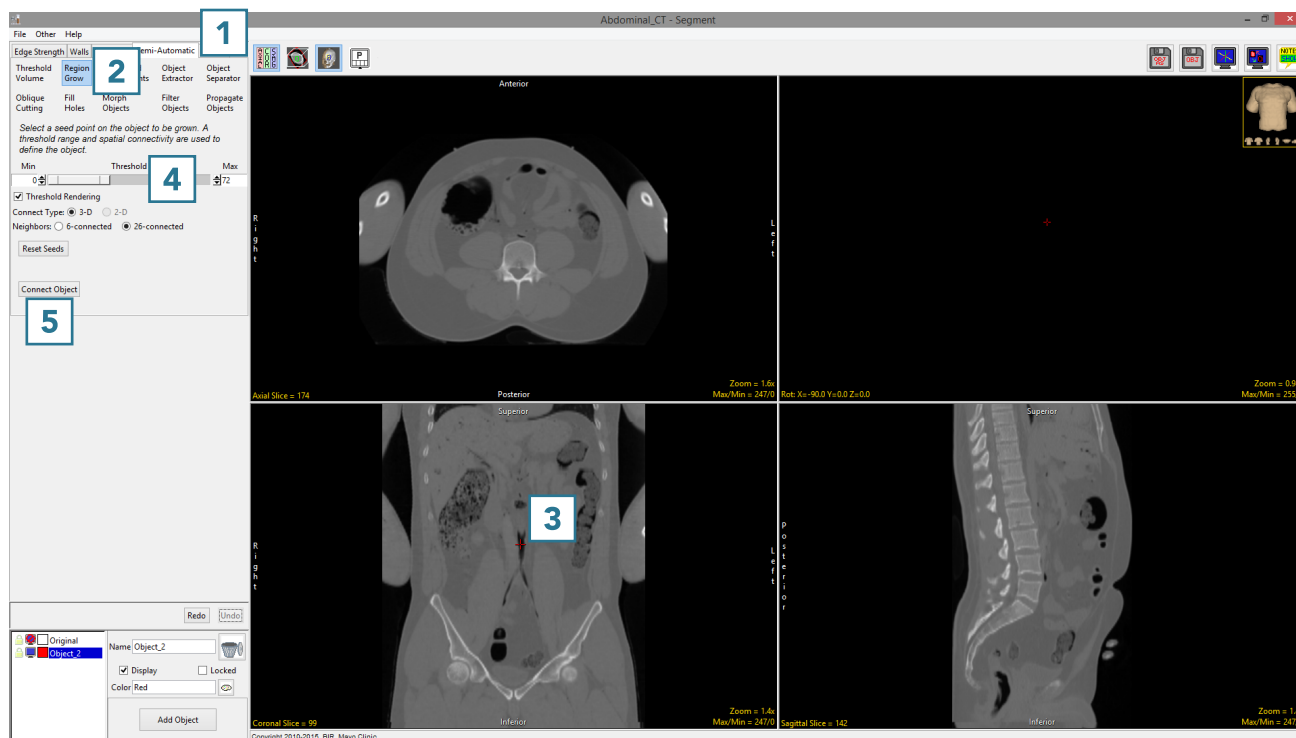
6. Adjusting Connected Neighbors

It may be necessary to adjust the number of neighbors used in order to limit the region grow. This will help prevent unwanted objects from being segmented with the target object.

- Select a data set and open Segment.
- Select Semi-Automatic **1** and choose Region Grow. **2**
- Click on the image data to set a seed point in the structure you would like to isolate. **3**
- Set the Threshold Min/Max values to define the object **4** and click Connect Object. **5**



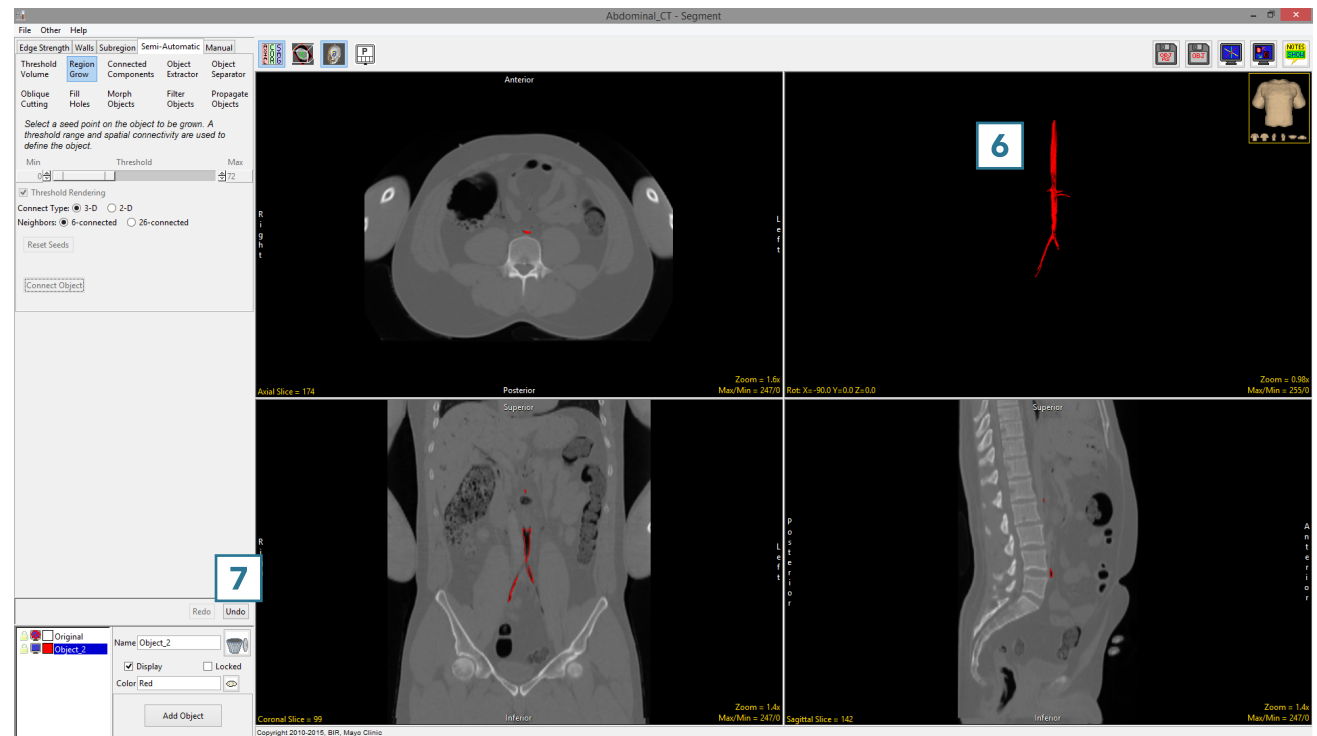
Download the VH_Abdomen data set to follow along
<http://analyzedirect.com/data/>





Note that the segmentation of the abdominal aorta in the example, using the default 26-connected neighbors, also assigns part of the left lung into the object. **6**

- Click Undo. **7**



- Set the seed point, **8** set Neighbors to 6-connected, **9** and click Connect Object. **10**

Note the segmentation result for the abdominal aorta **11** no longer contains part of the left lung.

