



Object Separator

The Object Separator tool uses morphologic erosion to break connections between objects based on user-defined seed points to specify objects to separate.

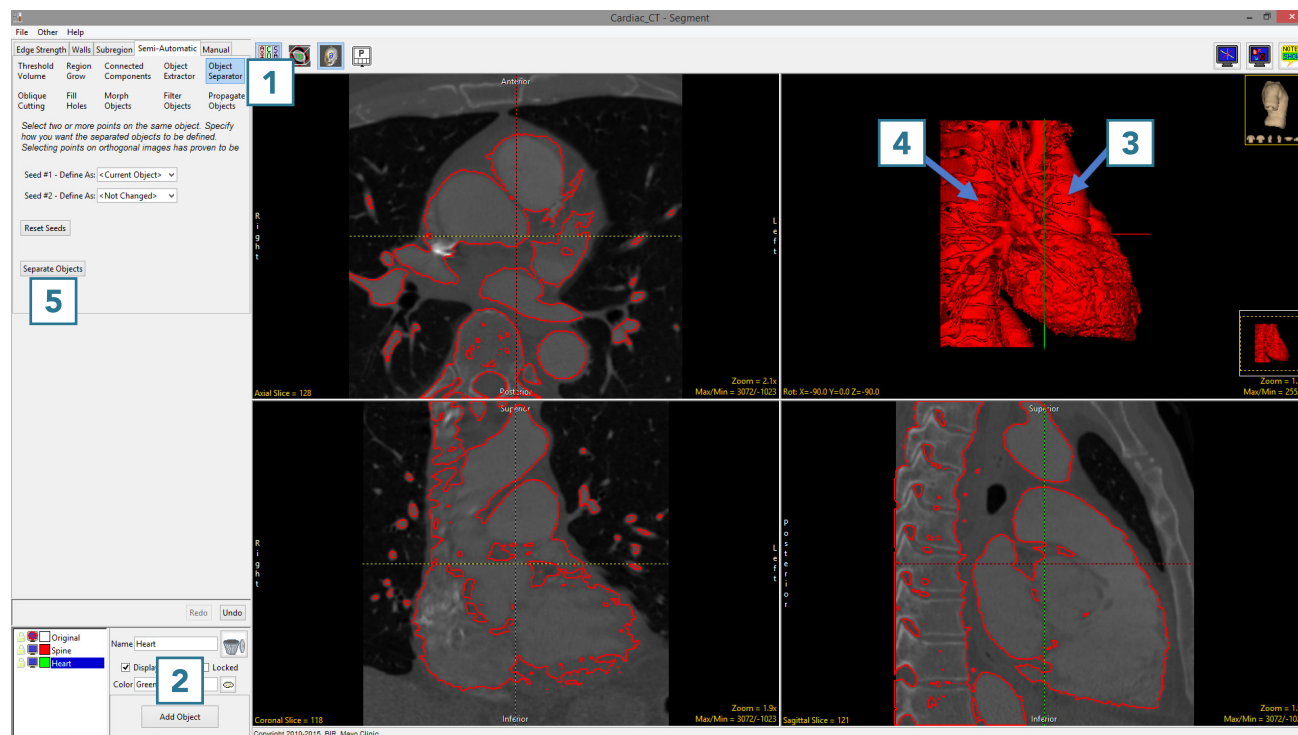


11. Separating Objects

- Select a data set and open Segment.
- Select Semi-Automatic and choose Region Grow.
- Click on the image data to set a seed point. The seed point should be in the object you would like to isolate.
- Set the Threshold Min/Max values to define the object and then click Connect Object.
- The structure will be isolated.
- Rotate the rendering to view the objects to disconnect.
- Select Object Separator **1** and click Add Object. **2**
- Set a seed point on the first structure **3** and add a seed point to the second structure. **4**
Object separator usually works best when the seed points are set in the orthogonal images.
- Click Separate Objects. **5**



Download the CT_Heart data set to follow along
<http://analyzedirect.com/data/>





- The structures will be disconnected and assigned to different objects. **6**
- Save your work by selecting File > Save Object Map.

