



Painting Regions of Interest

The Freehand Draw tool is particularly useful for manually defining or filling regions between locked objects, specifically when the region of interest is not easily segmentable but the surrounding tissue is.

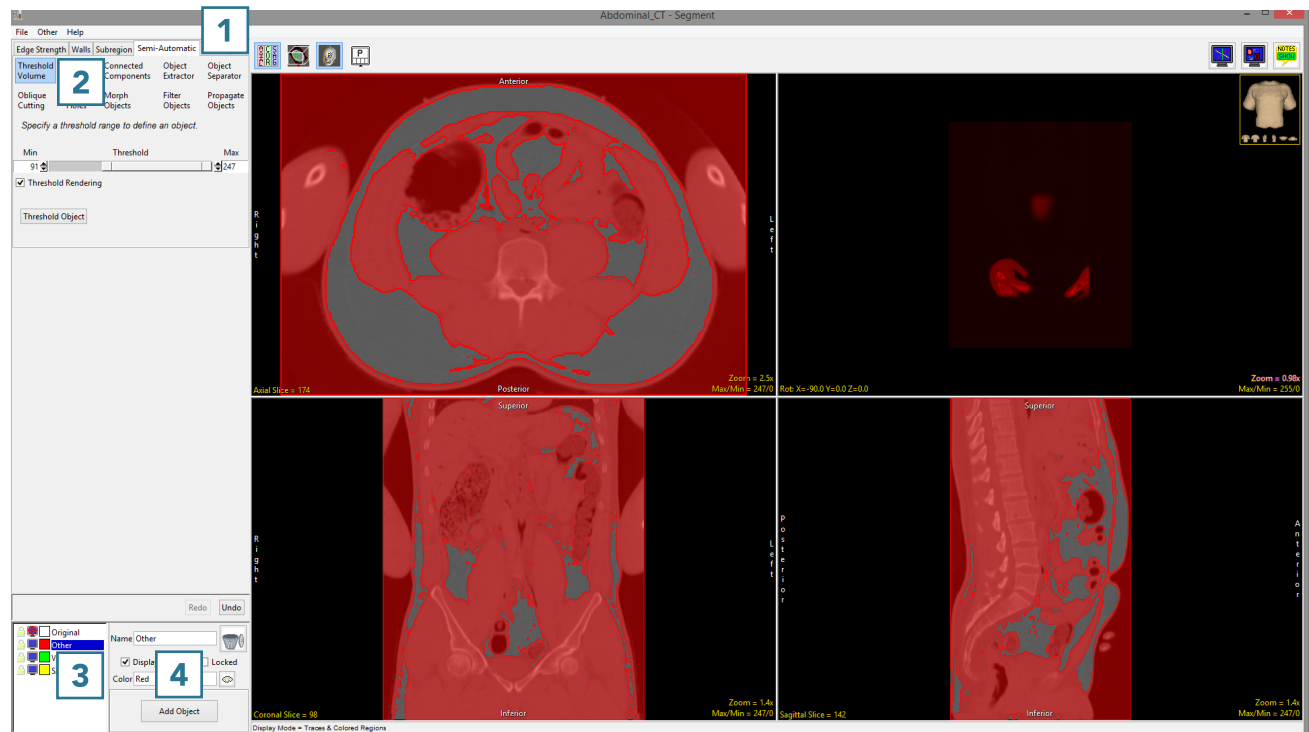
20. Using Freehand Draw to Paint Regions of Interest

- Select a data set and open Segment.
- Select Semi-Automatic **1** and choose Threshold Volume. **2**
- Change the name of the current object to Other, then add two new objects: VAT (visceral adipose tissue) and SAT (subcutaneous adipose tissue). **3**
- Select the Other object and use global thresholding to assign voxels having intensity values of 0 to 81 and 91 to 247 to the Other object. This will assign all of the non-adipose tissue voxels to the Other object.
- Lock the Other object. **4**

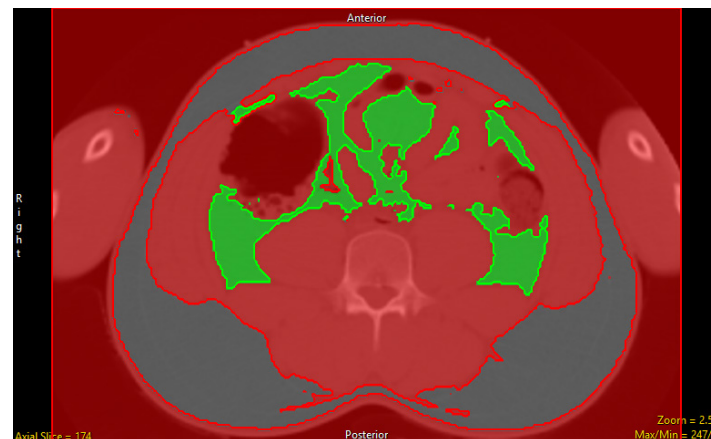
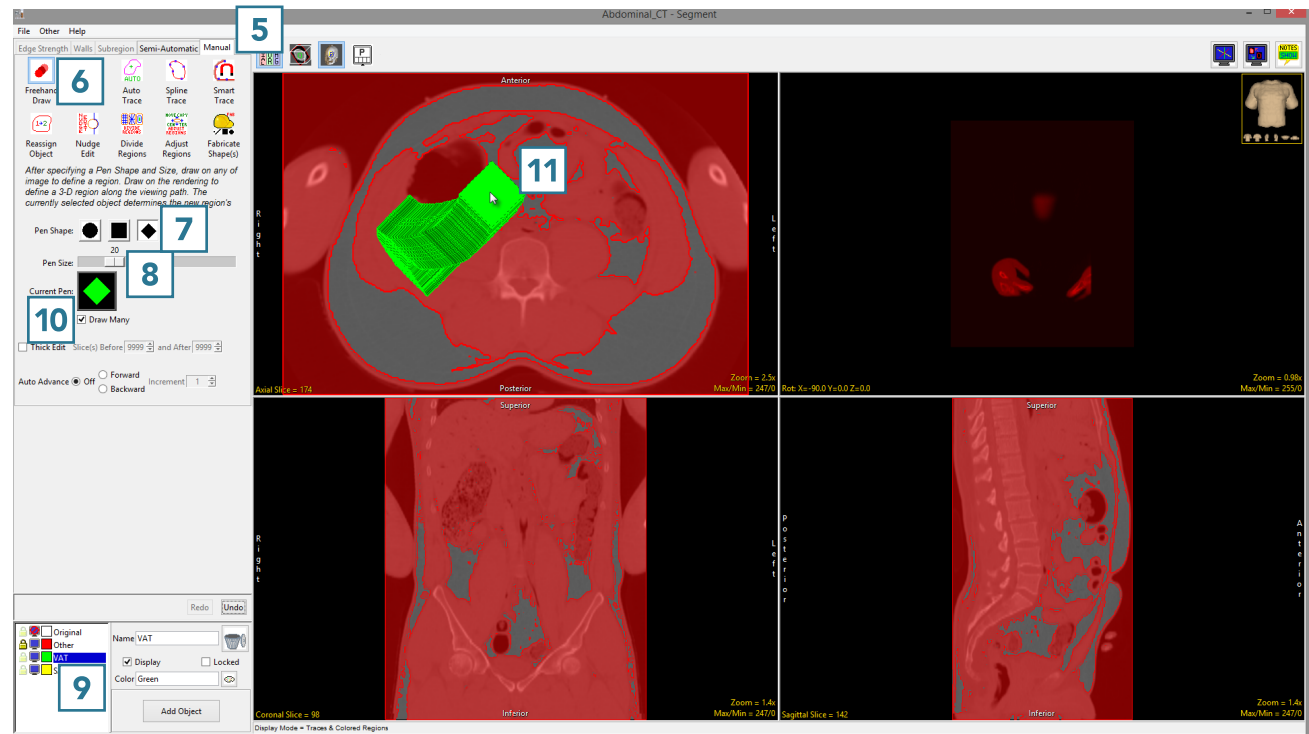
For more information on threshold-based segmentation, refer to [Threshold Volume](#).



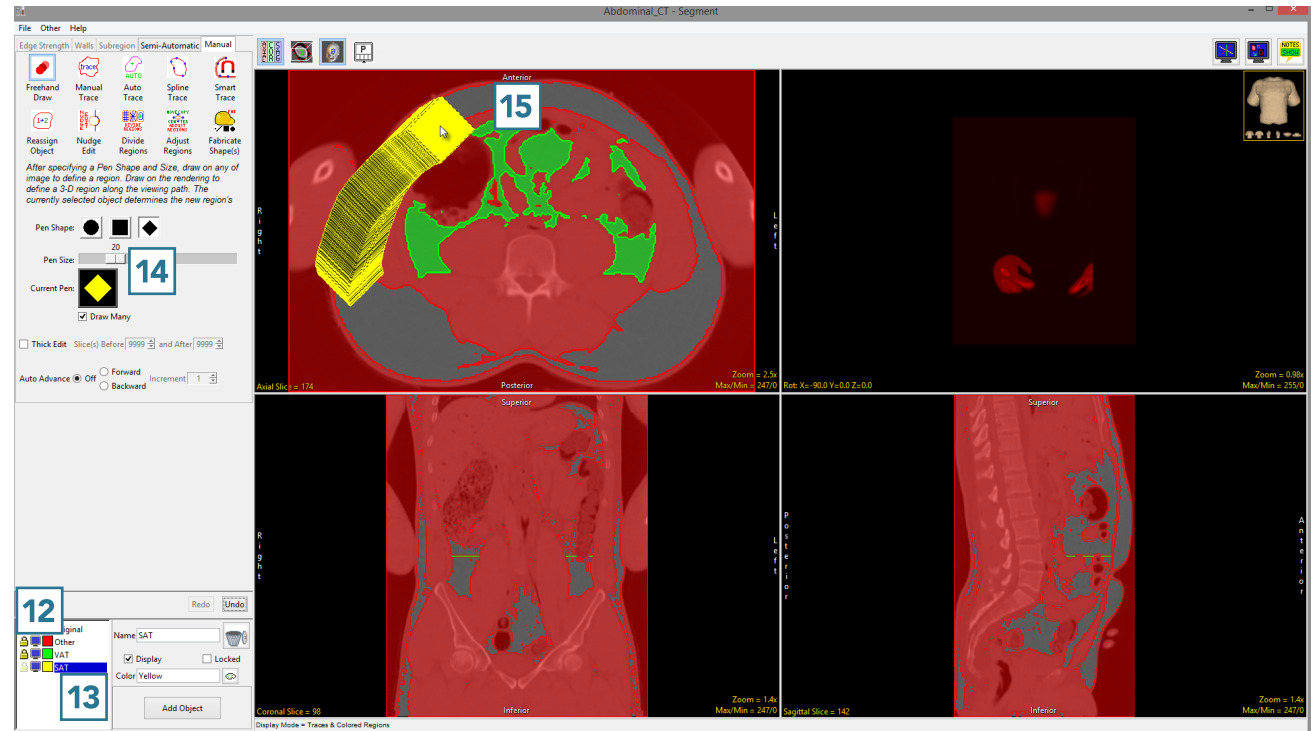
Download the VH_Abdomen data set to follow along <http://analyzedirect.com/data/>



- Select Manual **5** and choose Freehand Draw. **6**
- Set the Pen Shape to Diamond **7** and change the Pen Size to 20. **8**
- Select the VAT object **9** and note that the Current Pen **10** will update to the color of the VAT object.
- Use the pen tool to draw over the VAT regions. **11**



- Once the VAT region is defined, lock the VAT object **12** and select the SAT object. **13**
- Increase the Pen Size to 30 **14** and draw over the SAT regions. **15**



When finished, **16** use File > Save Object Map to save your work.

