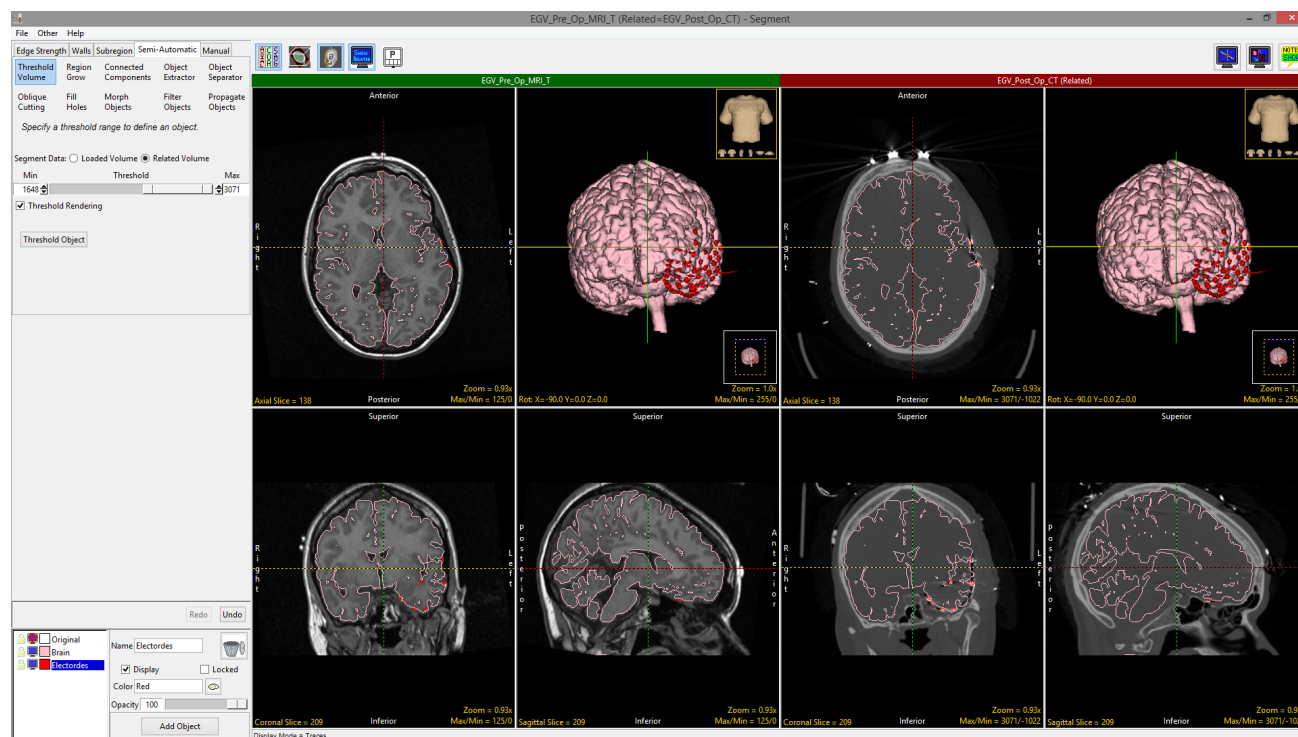




Dual Input Segmentation

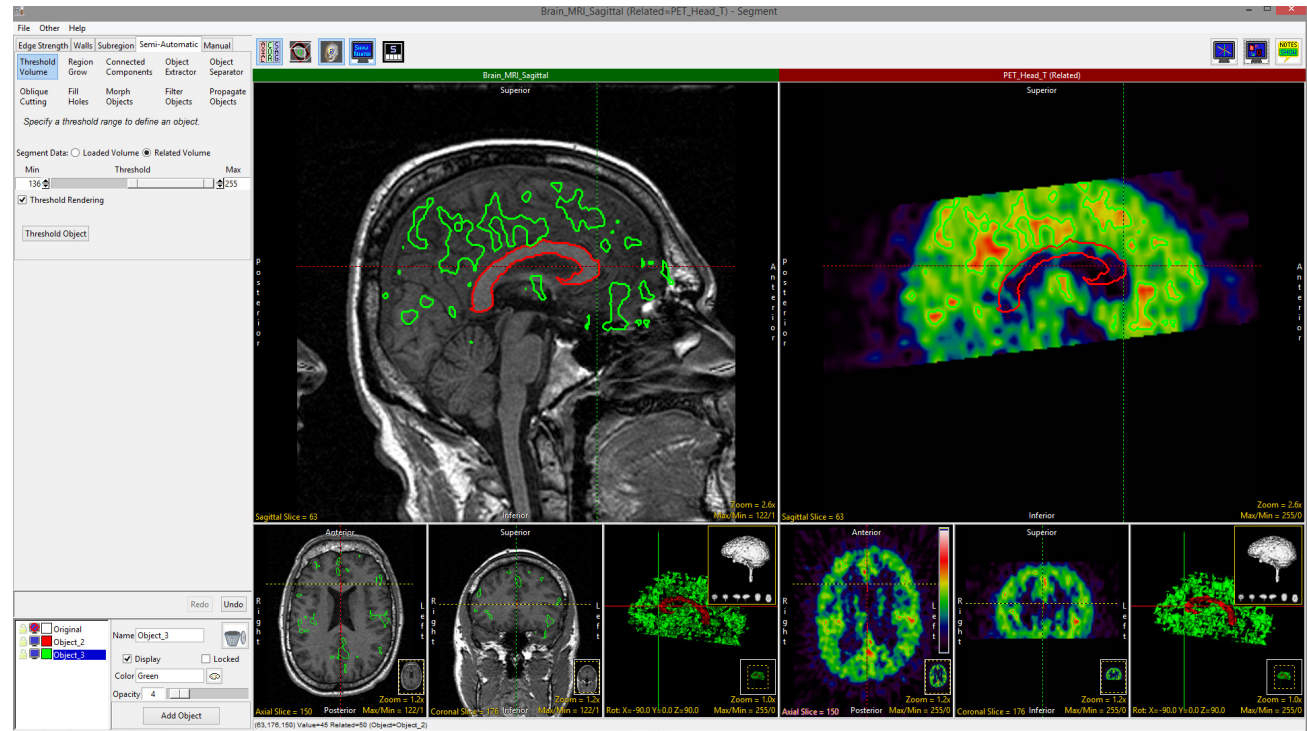
Segment allows users to load two registered input data sets. The ability to load related volumes is powerful and allows users to segment structures from either data set.

- Load registered pre-operative MRI and post-operative CT.
- Segment the brain from the MRI and electrodes from the CT.





- Load registered structural MRI and functional PET data. Structural regions can be delineated on the MRI and viewed on the PET, while regions of activity or uptake can be viewed on the functional data and displayed on the MRI.





- Loading two copies of the same input data set allows users to adjust or invert intensity display values on the related volume. This can be leveraged to assist with the segmentation of brain structures such as the thalamus.

