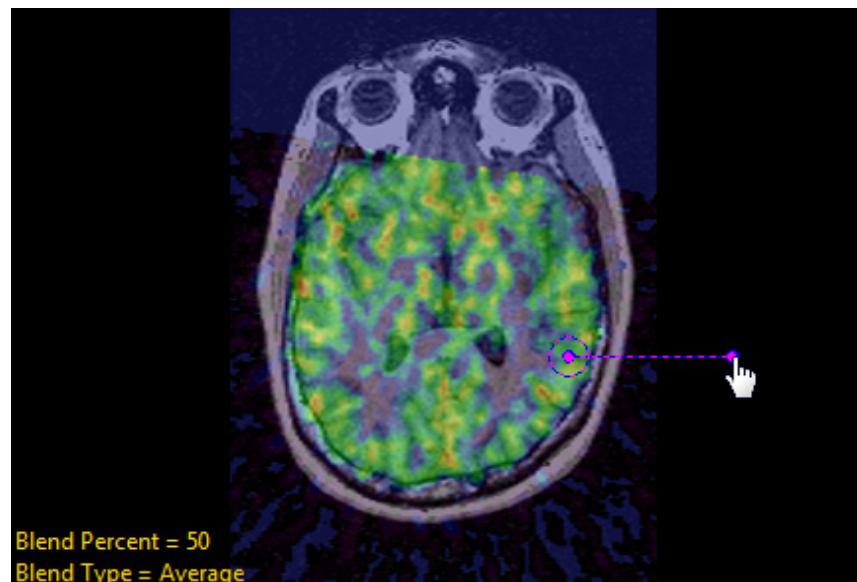
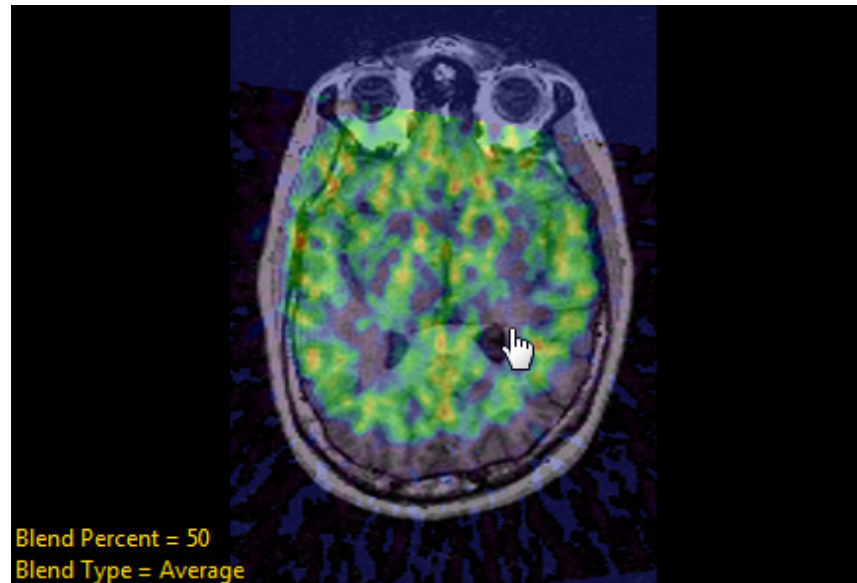


Manual Registration

The Manual Registration controls provide the ability for users to manually register the match to the base volume. The left mouse button can be used to interactively translate the image within the middle fused and right match columns.

Interactive rotation of the image can be done by selecting the right mouse button menu and setting the middle mouse button action to rotation via the Rotate @ Point option. You can then hold the middle mouse button and a rotation control point will appear.





Rotation and Translation buttons are also present in the right match column. These buttons can be used for precise movements. The default increment is set to 1 but can be changed by right-clicking the control buttons and selecting Increment.

Once satisfied with the manual registration, you can save the registered match volume or invoke one of the automatic registration methods to refine the registration using the manual registration as an initial guess.

