



1. Sampling Points

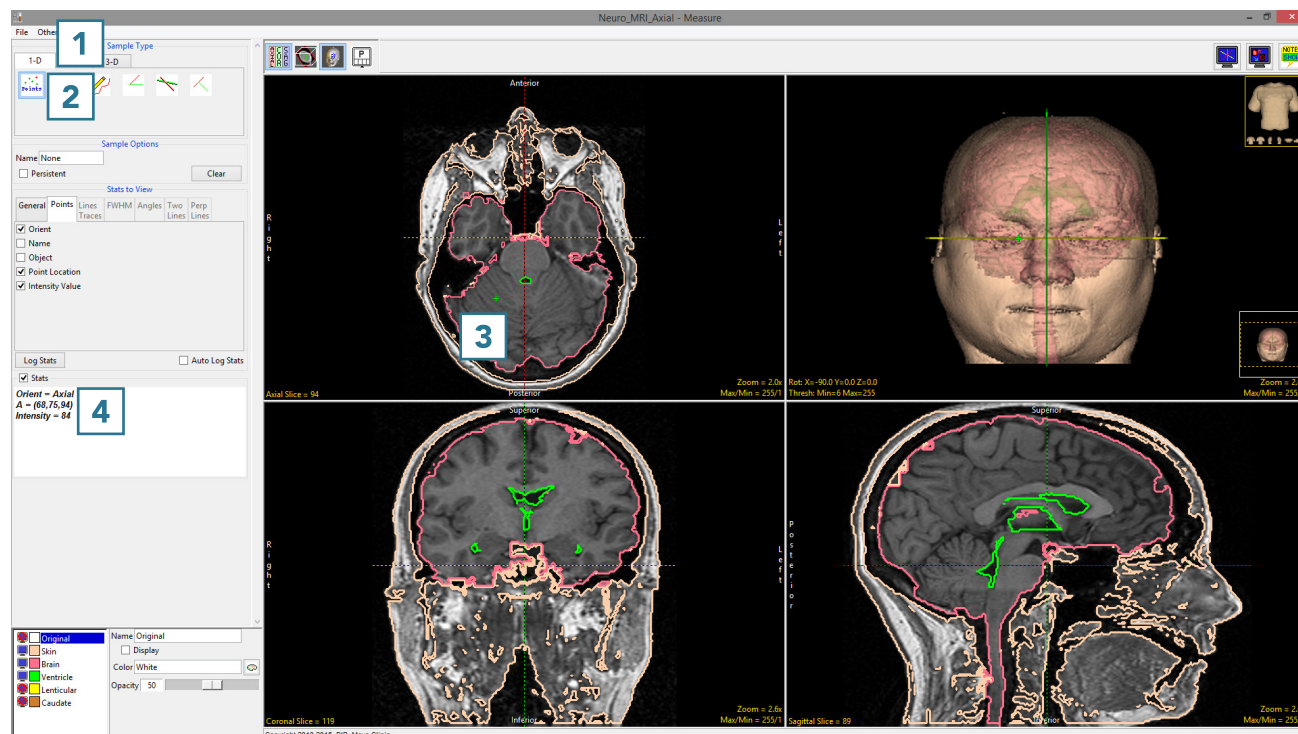
The Points tool allows users to select points on the 2D image data or 3D rendering. The tool will report the coordinates and intensity value of the selected point.

- Select MRI_3D_Head and open Measure. 1
- Select File > Load Object Maps and load MRI_3D_Head.obj. 2
- Select the 1D Sample Type 1 and choose Points. 2
- Click on the brain in the axial orientation 3 to set a point. 3

Note that the coordinates and intensity of the point will be reported in the Stats review area. 4



Download the MRI_3D_Head data set to follow along
<http://analyzedirect.com/data/>





- Check the Auto Log Stats option.

5 Each point selected will now be saved to a measurement log.

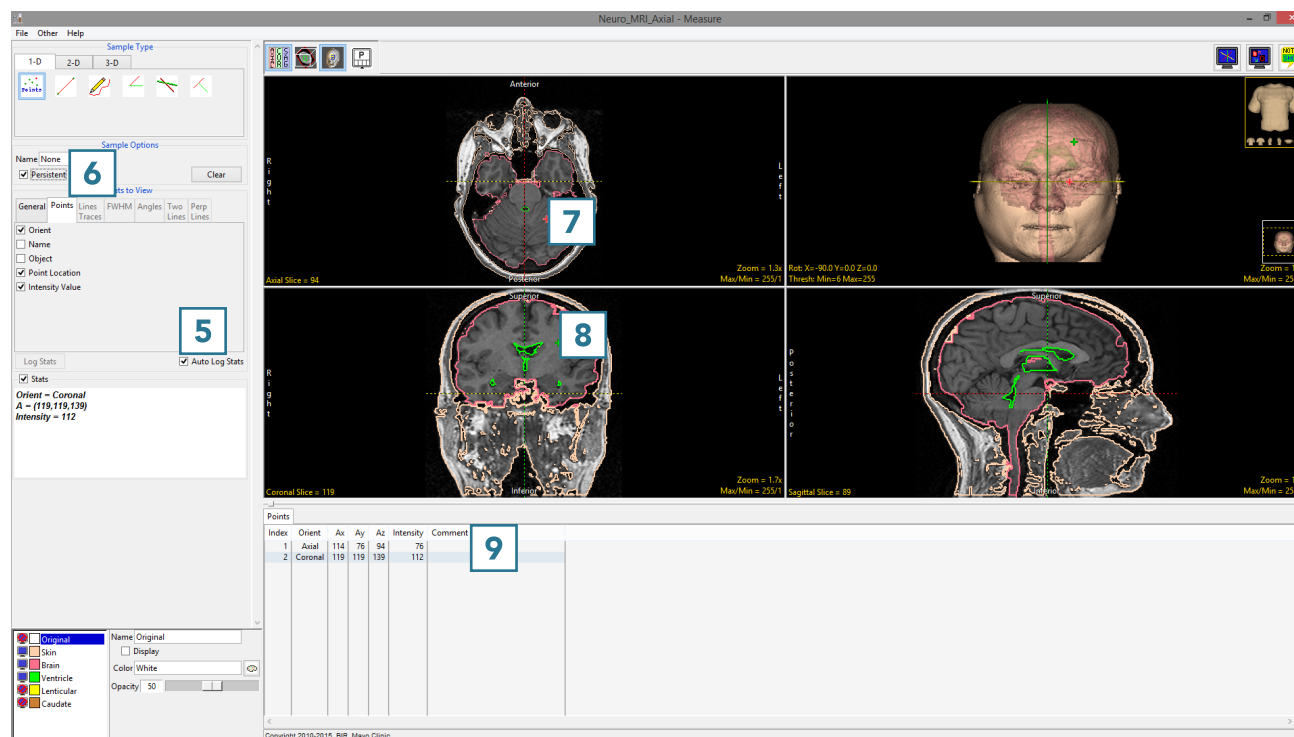
- Check the Persistent checkbox.

6 This will prevent points from being cleared from the display when a new point is selected.

- Set a new point in the axial orientation **7** and set another point in the coronal orientation.

8 The current point will display as green, while previous points will change to red.

- The coordinates and intensity values will be reported in the log. **9**





- Set several new points in the sagittal orientation **10** and on the rendering. **11**
- Right click on the log to save as a .CSV file. **12**





Note that point sampling does not require an object map to be loaded. **13**

