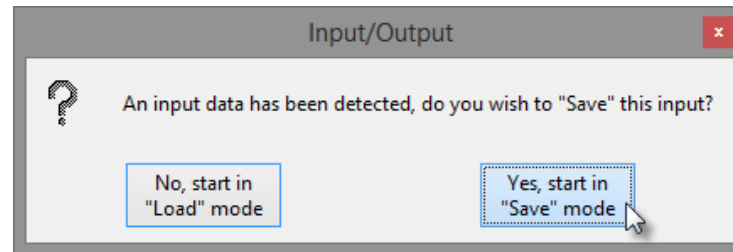


Output: Saving Data

Data can be exported from AnalyzePro as easily as it can be loaded into the program. Input/Output will open in Save mode when a data set is selected.



12. Opening Input/Output in Save Mode

- Select a data set and open Input/Output.
- A window will open, prompting you to open in Load or Save mode. Select Save mode.

13. Saving a Data Set

- Input/Output will open with Output selected and the Output Type set to Disk. **1**
- Choose to save the data as a 3D Volume **2** (default) or as multiple 2D images. The selection will determine the formats you can select for saving the data (see [Table 3.1](#)).
- Use Directory **3** to select the location where you will be saving the data.
- Use File **4** to rename the data.
- Use Format **5** to specify the file format for the saved data.
- Select Save Volume to save the data.

