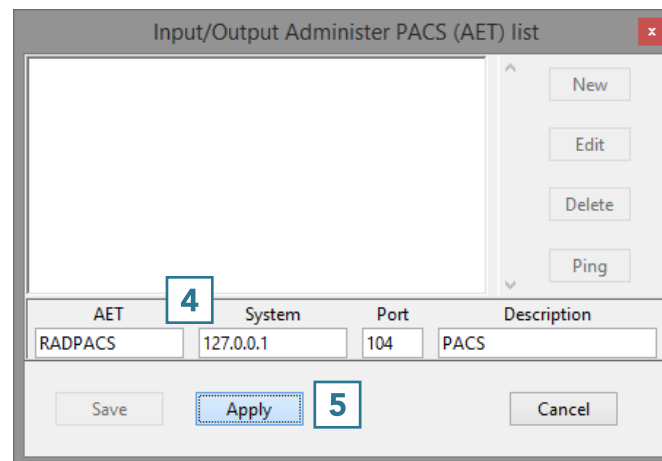
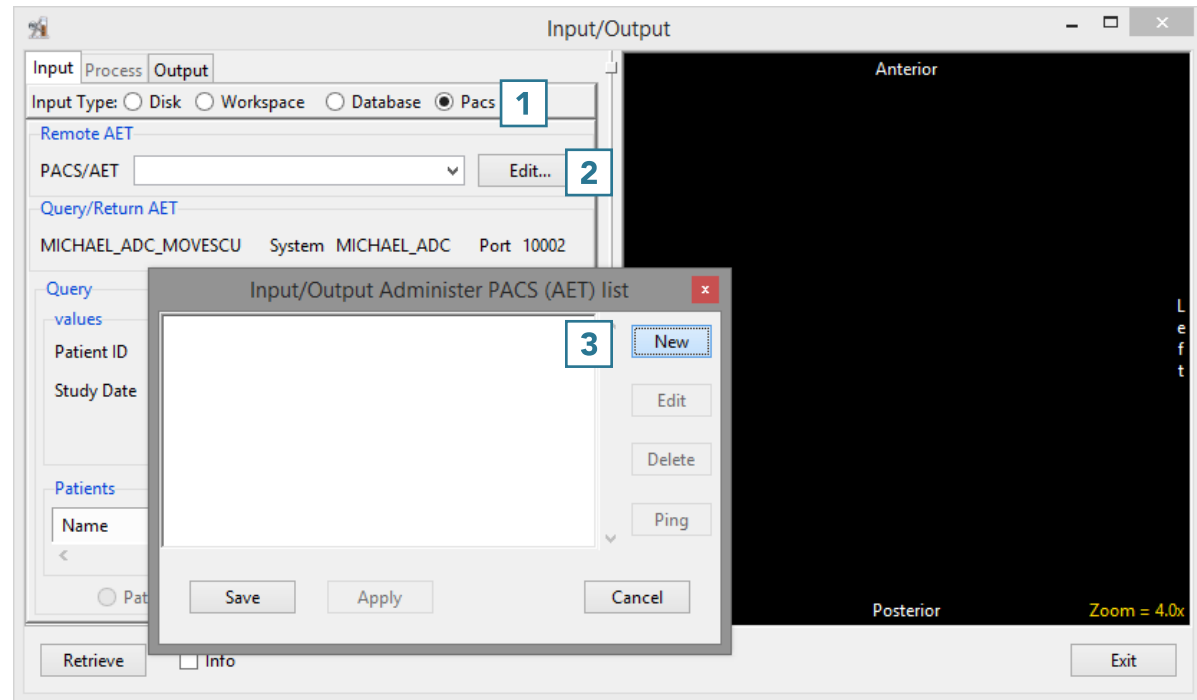


4. Configuring PACS Communications

To set up communications to allow Query and Retrieval of DICOM data from PACS, first create a database (see Creating a DICOM database), then open Input/Output.

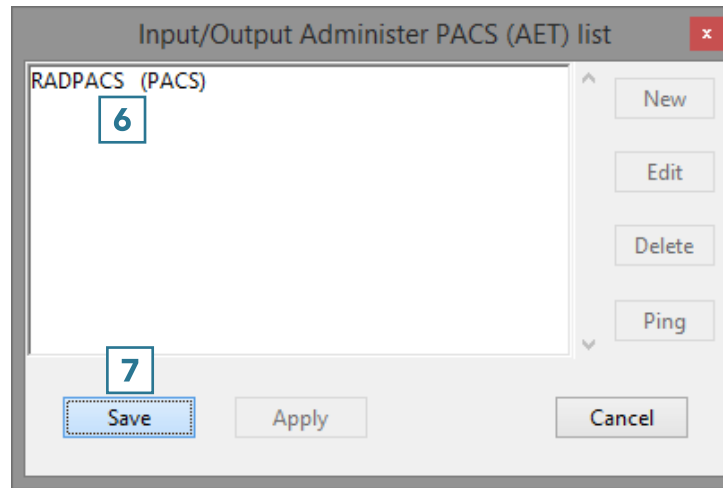
- Set Input Type to PACS. **1**
- Under Remote AET, click Edit. **2**
- In the Input/Output Administer PACS (AET) list window that opens, click New. **3**
- The window will update showing AET, System, Port, and Description fields. Enter the PACS information into these fields **4** and click Apply. **5**

Note that you will need to contact your PACS administrator to obtain the relevant PACS information.



- The window will update and the PACS information will be available in the main window. **6**
- Click Save to close the window. **7**
- The PACS is now configured on the AnalyzePro side.

Note that there may be additional configuration required on the PACS side by your PACS admin.



- To Query the PACS, enter the Patient ID, Patient Name or Study Date **1** and click Find **2** or press [Enter].
- The relevant patient data will displayed under Patients. **3**
- Select the patient and click Retrieve **4** to merge into the current database.

