



Analyze 15.0

INSTALLATION GUIDE
FOR MAC

Analyze 15.0

Installation Guide: Mac

Welcome to Analyze 15.0	page 3
Analyze 15.0 System Requirements	page 3
Installing Analyze 15.0	page 4
Analyze 15.0 Licenses	page 7
Analyze 15.0 License Types	page 7
Requesting a License File	page 7
Analyze 15.0 License File Installation	page 11
Installing a Node-Locked License	page 11
Installing a Floating License Server	page 12
Installing a Floating License Client	page 14
Running Analyze 15.0	page 15



Welcome to Analyze 15.0

Analyze 15.0 is a robust research software for advanced biomedical imaging visualization, manipulation and measurement. Analyze 15.0 has been carefully designed to provide an intuitive and facile interface. The software features integrated modules that provide access to complementary tools for fully interactive multi-dimensional display, processing, segmentation, registration and measurement of biomedical imaging modalities including MRI, CT, PET, SPECT, ultrasound and digital microscopy. The applications of Analyze 15.0 are broad in scope, wide in scale and penetrating in impact.

Analyze 15.0 System Requirements

If you want to run Analyze 15.0 on your Mac system, here's what it takes:

- **Operating System:** macOS 10.15.
- **Processor:** 2 GHz dual core processor or better.
- **Minimum RAM:** 16GB.
- **XQuartz:** Version 2.7.11

Optional Recommendations

- **Hard drive:** Solid State Drive.
- **Graphics card:** OpenGL 4.0 support recommended. CAD- or gaming quality NVidia card highly recommended.
- **Internet access:** Required for license retrieval and patch updates.

PCs with multi-core processors

Analyze 15.0 is designed to work with multi-core processors and will automatically utilize each core.



Installing Analyze 15.0

Note: Analyze 15.0 requires the latest version of XQuartz to be downloaded from xquartz.org and installed on your Mac prior to installation. Also disconnect from any VPN connection prior to the Analyze 15.0 installation.

Download the Analyze 15.0 installer from:
<https://analyzedirect.com/free-trial/>

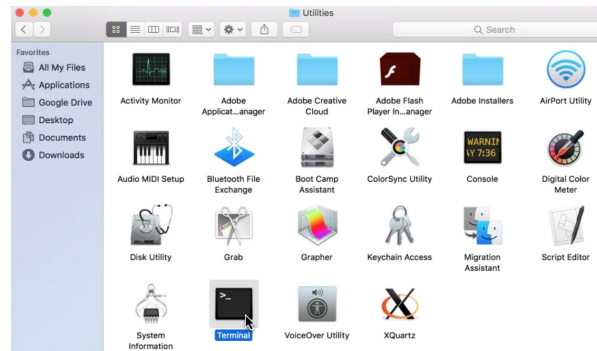


Figure 1

In Finder, drag the Analyze15 file from the Downloads folder to the Desktop

To begin the installation process:

1. Open a terminal window (Applications > Utilities > Terminal) (Figure 1).
2. In the terminal window navigate to the desktop folder by using the command "cd desktop" and then press Return (Figure 2).
3. Next type the command "chmod 777 Analyze15" and then press Return (Figure 2).
4. To initiate the installer type, the command "./Analyze15" and then press Return (Figure 2).

Note: if you get an error message such as "zsh: killed ./Analyze15" or "Analyze15 cannot be opened because the developer cannot be verified", do the following:

- Open Privacy and Security (Finder > Applications > System Settings > Privacy and Security). Scroll down, and next to the message "Analyze15 was blocked from use..." click on the "Allow Anyway" button (Figure 3).
- Return to the Terminal window, and enter the command "./Analyze15" (Figure 2).
- If any further messages appear such as "macOS cannot verify the developer of Analyze15..." click on the "Open" button.

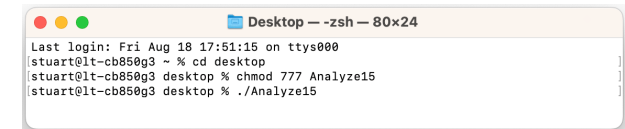


Figure 2

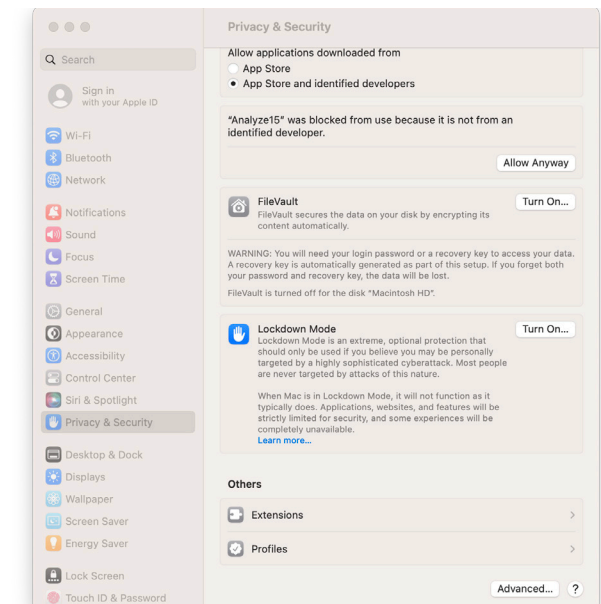


Figure 3

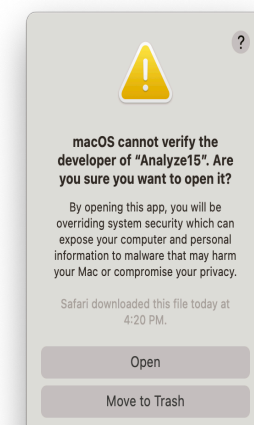


Figure 4

Installing Analyze 15.0 (continued)

5. After executing the installation command, the installer will open to a 'Welcome' screen. Click Next to begin the Analyze 15.0 installation (Figure 5).
6. Please read the End-User License Agreement for AnalyzeDirect Software (Figure 6) and select 'I accept' or 'I do not accept'. Note, if you select 'I do not accept', Analyze 15.0 will not be installed.
7. Click Next.

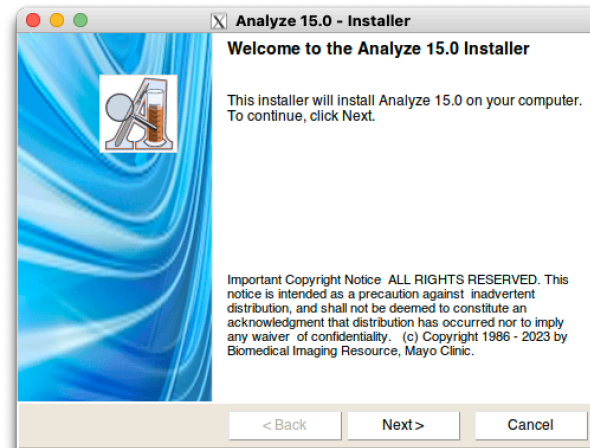


Figure 5

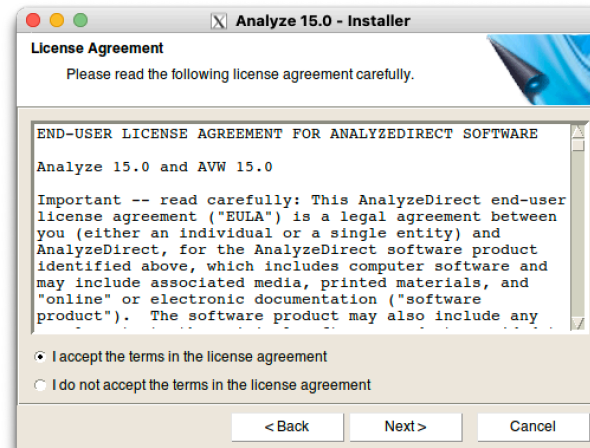


Figure 6

Installing Analyze 15.0 (continued)

8. Destination Folder: The default location for installation is /Applications/BIR. It is recommended to leave this as the destination folder (You will need to have write permission for this directory). Click Next (Figure 7).
11. Next, a Ready to Install the Program window will appear (Figure 8). Verify that the 'Current Settings' are accurate, then click Install.
12. Analyze 15.0 will now be installed in the specified folder.
13. When the Installer notifies you that installation is complete, click Finish (Figure 9). Note that if the Start Analyze option is selected, Analyze 15.0 will automatically open. However, **Analyze 15.0 requires a license in order to run.** To request a license, please follow the instructions in the next section of this document; Analyze 15.0 License Types.

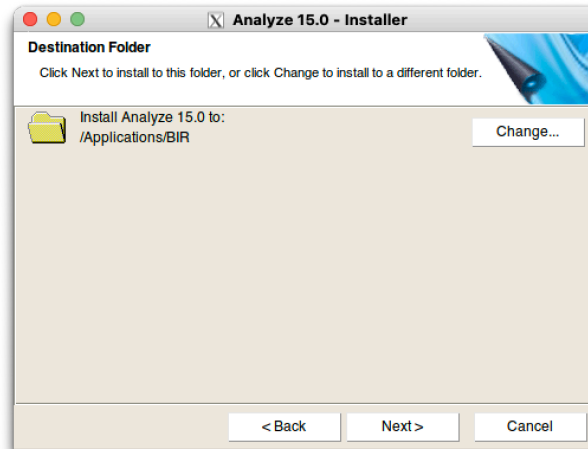


Figure 7

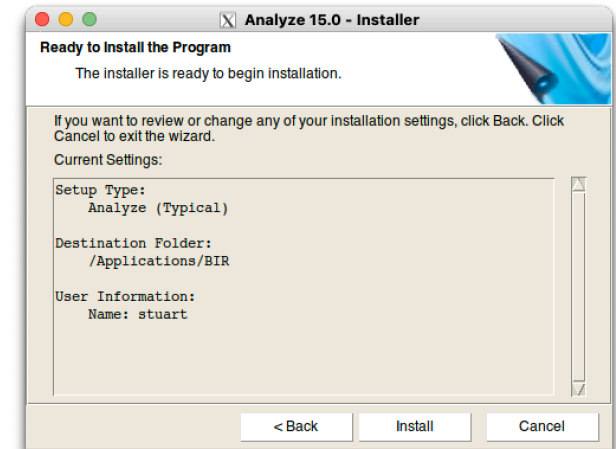


Figure 8

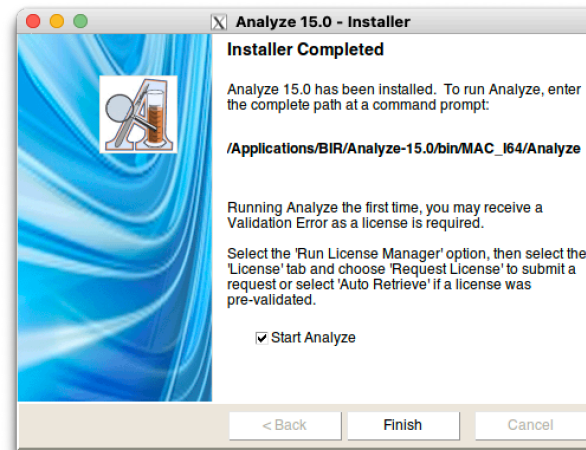


Figure 9



Analyze 15.0 Licenses

Analyze 15.0 License Types

There are two types of license available for Analyze 15.0: node-locked and floating.

A **node-locked license** will allow Analyze 15.0 to be run on one system only. With a node-locked license, all license file administration is handled local to the specific system.

A **floating license** allows one system to act as a license server, “floating” the license across a network to a client system. Any client system with access to the license server can check out a license if one is available. For example, if only one floating license is purchased, two or more client systems cannot run Analyze 15.0 simultaneously. Note - Analyze 15.0 needs to be installed on the license server AND all client systems.

For information on license pricing and options, please contact sales@analyzedirect.com.

Requesting a License File

A system-specific AnalyzeDirect.lic license file must be installed for Analyze 15.0 to run. You can obtain this license file from AnalyzeDirect. In order to generate your license, we must receive two pieces of information specific to the computer:

- 1) the Host Name and
- 2) the Host ID.

The instructions below will explain how to send this information automatically to AnalyzeDirect.

Requesting a License File (continued)

1. Open Analyze 15.0 by navigating to the Applications/BIR/Analyze-15.0/bin/MAC_I64 folder and double clicking on the Analyze 15.0 executable.
2. If this is the first time you have opened Analyze 15.0 you will need to read and accept the End User License Agreement. (Figure 10)
3. If you do not have a valid license, an Analyze Validation Alert will be returned (Figure 11).
4. Click Open Analyze License Manager.

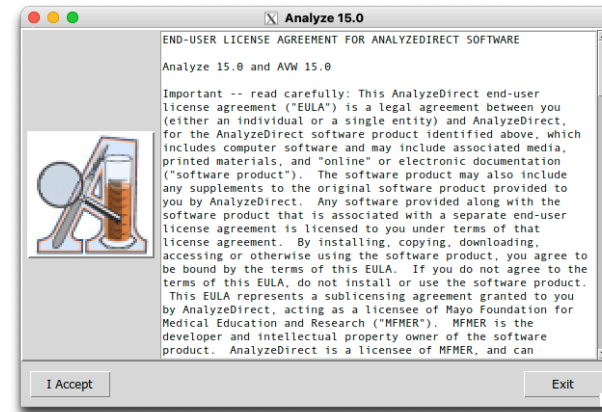


Figure 10

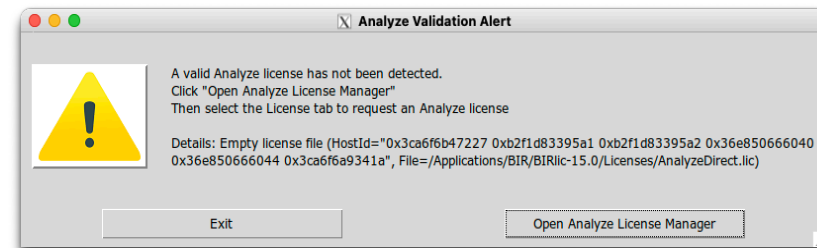


Figure 11

Requesting a License File (continued)

5. The Analyze License Manager will open to the System Info tab (Figure 12).
6. Click on the License tab and select Request License (Figure 13).
7. Your Host Name and ID will be automatically populated. To submit a license request, you must enter your Company or Institution, Name, Email and Phone. Select any additional Apps and then click the Send Request button (Figure 14).

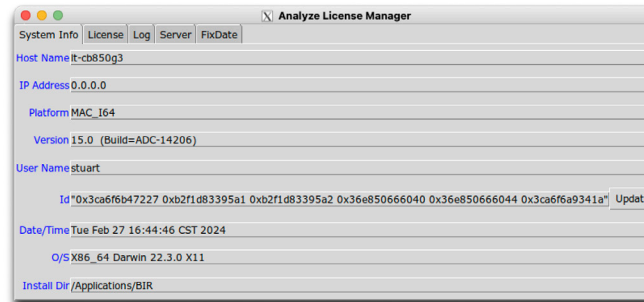


Figure 12

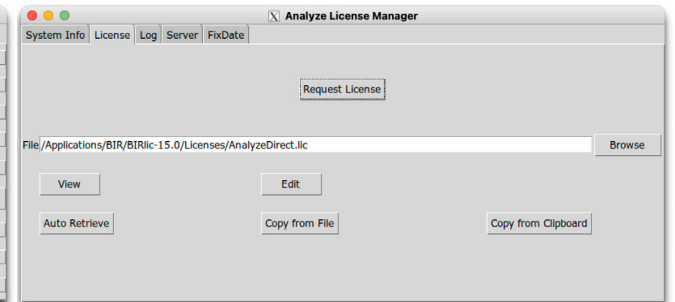


Figure 13

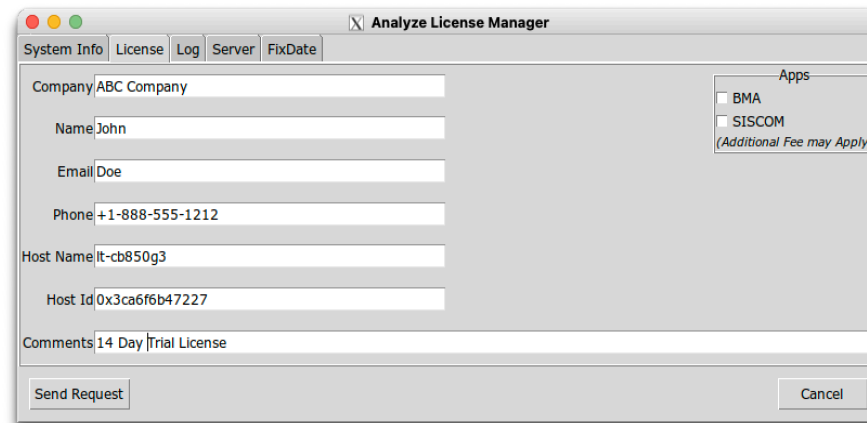


Figure 14



Requesting a License File (continued)

6. A window will be returned once your license request is submitted (Figure 15). Click OK to dismiss the window.

If you are unable to submit a request, please send the information in the license request form, along with your system type to: **validate@analyzedirect.com**.

Once AnalyzeDirect receives your system information, a license will be generated and you will be notified via e-mail. **Please note that licenses are only generated during our regular business hours of 8:00am - 6:00pm US Central Time. The process is not immediate.**

To retrieve and install your license, follow the instructions in that email or refer to the instructions for your license type (node-locked or floating) in the next section of this document.

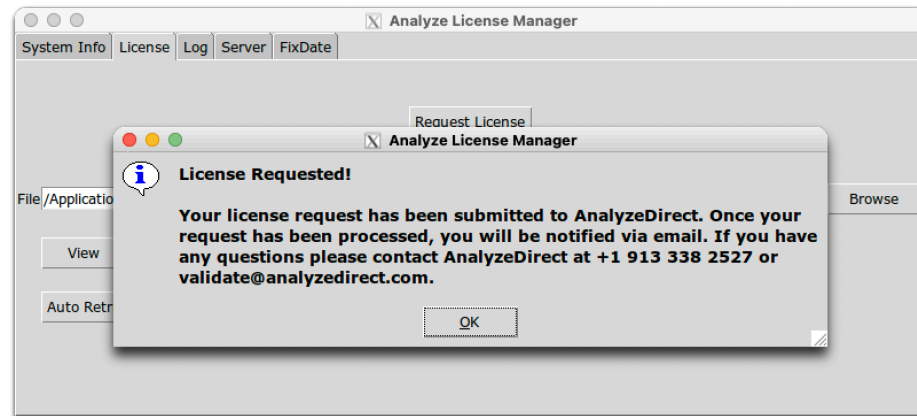


Figure 15

Analyze 15.0 License File Installation

Installing a Node-Locked License

Once you have been notified by AnalyzeDirect that your AnalyzeDirect.lic license file has been generated:

1. Open Analyze 15.0 by navigating to the /Applications/BIR/Analyze-15.0/bin/MAC_I64 folder and double-clicking on the Analyze 15.0 executable.
2. If you do not have a valid license, an Analyze Validation Alert will be returned. Click Open Analyze License Manager (Figure 16).
3. The Analyze License Manager will open. Click on the License tab. Click the Auto Retrieve button (Figure 17).
4. A window will be returned telling you that your license file has been retrieved successfully (Figure 18). Click OK to dismiss the window.

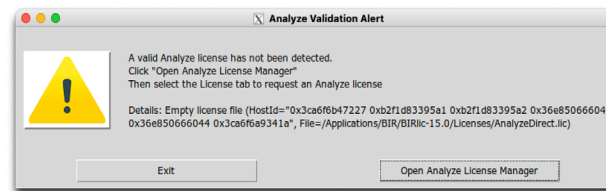


Figure 16

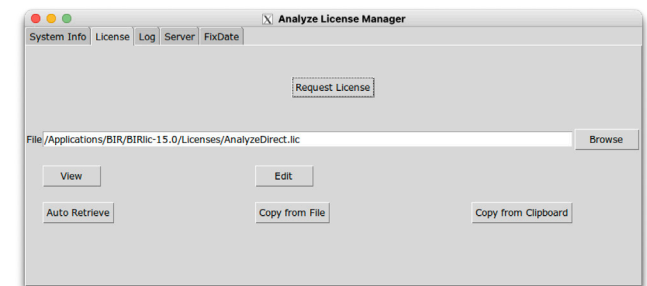


Figure 17

Note: If license retrieval is unsuccessful, please contact AnalyzeDirect at:

validate@analyzedirect.com

or

+1 913-338-2527.

No further configuration is needed for a node-locked license on a Mac.

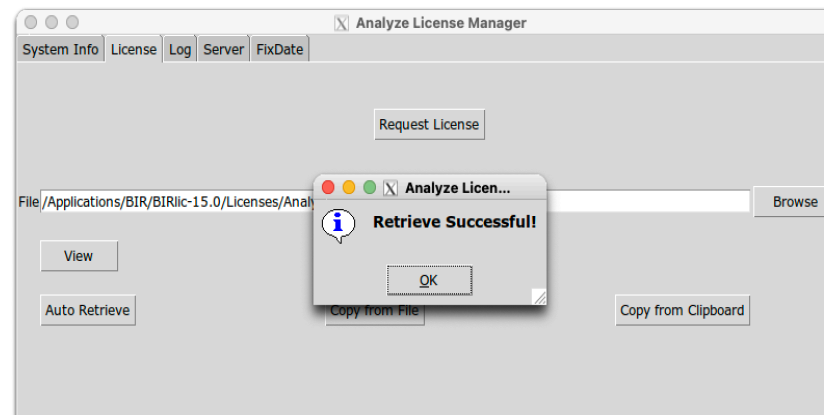


Figure 18

Installing a Floating License Server

Once you have been notified by AnalyzeDirect that your AnalyzeDirect.lic license file has been generated:

1. Ensure that you are logged into Mac as an administrator user and that you know the user account password.
2. Then, open a Terminal window (Applications > Utilities > Terminal) and issue the following command in the Terminal window:

```
sudo /Applications/BIR/Analyze-15.0/bin/MAC_I64/BIRlicTool
```
3. You will be prompted for a password. Enter the password for your Mac user account (the screen will remain blank as you type) and press <Return>.
4. The Analyze License Manager will open. Click on the License tab.
5. Click the Auto Retrieve button. A window will be returned telling you that your license file has been retrieved successfully (Figure 19). Click OK to dismiss the window.

Note: If license retrieval is unsuccessful, please contact AnalyzeDirect at: validate@analyzedirect.com or +1 913-338-2527

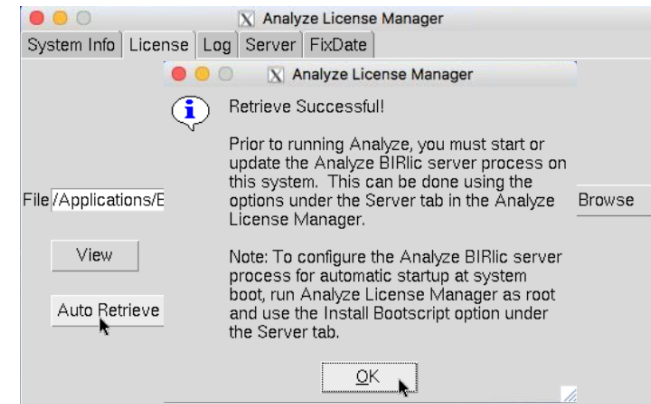


Figure 19

Installing a Floating License Server (continued)

6. Before any client systems can checkout the floating license, the BIRlic license server must be started on the server system. To do this, select the Server tab in the BIRlic Tool.
7. To configure your system to start the BIRlic license server automatically at startup, click the Install/Start Bootscript button (Figure 20).
7. Click Yes to confirm that you would like to install the bootscript for automatic license server startup on this system (Figure 21).
8. Once the bootscript has been installed and started, a notification window will appear. Click OK to dismiss it (Figure 22).
9. To configure client systems, please continue to the next page. Exiting the Analyze License Manager will automatically start Analyze 15.0.

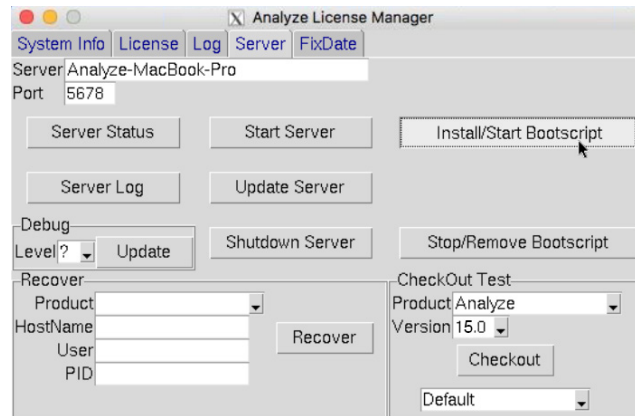


Figure 20

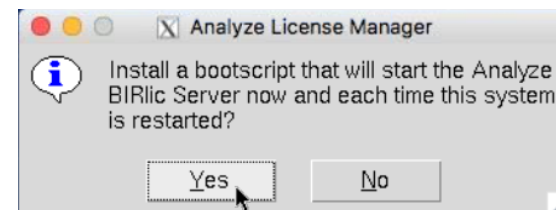


Figure 21

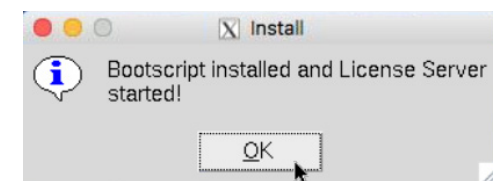


Figure 22

Installing a Floating License Client

1. Open Analyze 15.0 by navigating to the /Applications/BIR/Analyze-15.0/bin/MAC_I64 folder and double-clicking on the Analyze 15.0 executable.
2. If you do not have a valid license, an Analyze 15.0 Validation Alert will be returned. Click Run License Manager (Figure 23).
3. The Analyze License Manager will open. Click on the License tab. Click the Auto Retrieve button (Figure 24).
4. A window will be returned telling you that the server does not match the server listed, click Yes to confirm that this is a Floating License Client (Figure 25).
5. In the window returned, enter the Host ID from the Floating License Server system and then click Retrieve (Figure 26).
6. No additional configuration is necessary on client systems. **Do not start the Analyze License Server on client systems.** Close the Analyze License Manager and Analyze 15.0 will automatically start.

If at any point you encounter difficulties getting your floating license server or client systems up and running, please contact us either by email at support@analyzedirect.com or call +1 (913) 338-2527.

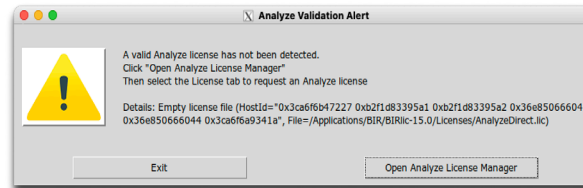


Figure 23

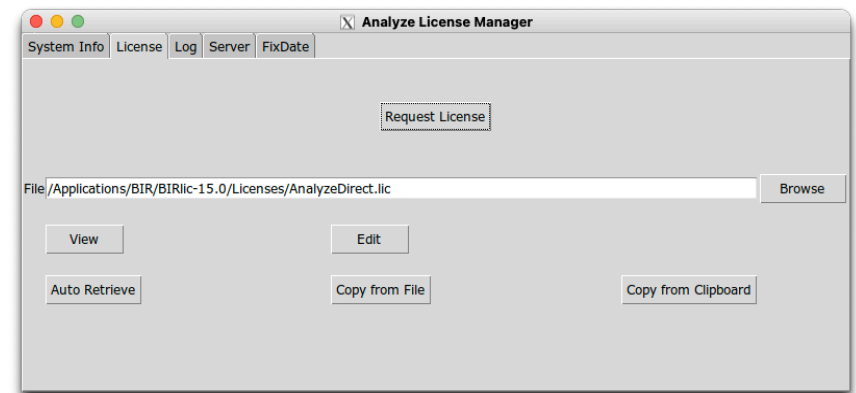


Figure 24

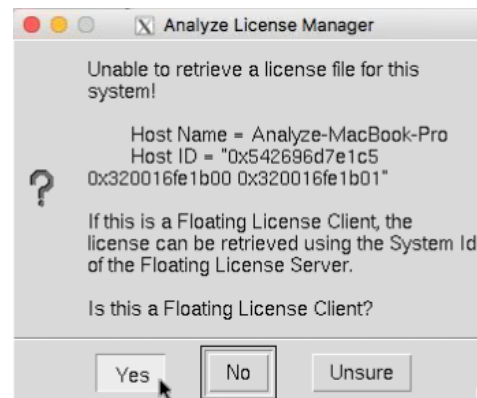


Figure 25

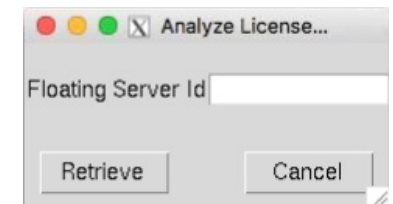


Figure 26



Running Analyze 15.0

Once Analyze 15.0 has been installed and the AnalyzeDirect.lic license has been retrieved and configured, the program is ready to run. To open Analyze 15.0, double-click on the Analyze 15.0 executable in the Applications/BIR/Analyze-15.0/bin/MAC_I64 folder.

Add Analyze 15.0 to your Dock

To create a shortcut to Analyze 15.0 on your Dock, drag the Analyze 15.0 executable file from the /Applications/BIR/Analyze-15.0/bin/MAC_I64 folder and drop it on the right-hand side of the Dock divider (the same side as the Trash Can).

Analyze 15.0 Updates

When Analyze 15.0 is opened for the first time, use the Analyze Update function to download and install the latest patch update. To access the update, right-click in the main Analyze window and select 'Analyze Update'. As with most software products, the process of bug fixing and minor maintenance between versions is an ongoing process. Analyze 15.0 has all such fixes available in the form of a patch. If a new patch is detected, the program will provide the option to download and automatically install the patch. It is recommended that you check for new patch updates the first time you run Analyze 15.0 and once each month thereafter.

Analyze 15.0 User's Guide

To quickly get up and running with Analyze 15.0, please refer to the Analyze 15.0 User's Guide. The User's Guide can be accessed from: <http://analyzedirect.com/analyze-support/>

Getting Help

If you need assistance getting up and running with Analyze 15.0, or if you need help using the software, please contact the Analyze 15.0 support team using the following methods:

- Call: +1 (913) 338-2527
- Email: support@analyzedirect.com
- Online: <http://analyzedirect.com/support-request/>