



Analyze 15.0

INSTALLATION GUIDE
FOR LINUX

Analyze 15.0

Installation Guide: LINUX

Welcome to Analyze 15.0	page 3
Analyze 15.0 System Requirements	page 3
Installing Analyze 15.0	page 4
Analyze 15.0 Licenses	page 7
Analyze 15.0 License Types	page 7
Requesting a License File	page 7
Analyze 15.0 License File Installation	page 11
Installing a Node-Locked License	page 11
Installing a Floating License Server	page 14
Installing a Floating License Client	page 17
Running Analyze 15.0	page 18



Welcome to Analyze 15.0

Analyze 15.0 is a robust research software for advanced biomedical imaging visualization, manipulation and measurement. Analyze 15.0 has been carefully designed to provide an intuitive and facile interface. The software features integrated modules that provide access to complementary tools for fully interactive multi-dimensional display, processing, segmentation, registration and measurement of biomedical imaging modalities including MRI, CT, PET, SPECT, ultrasound and digital microscopy. The applications of Analyze 15.0 are broad in scope, wide in scale and penetrating in impact.

Analyze 15.0 System Requirements

If you want to run Analyze 15.0 on your Linux system, here's what it takes:

- **Operating System:** Ubuntu 18.04.3 LTS or equivalent.
- **Processor:** 2 GHz dual core processor or better.
- **Minimum RAM:** 16GB.

Optional Recommendations

- **Hard drive:** Solid State Drive.
- **Graphics card:** OpenGL 4.0 support recommended. CAD- or gaming quality NVidia card highly recommended.
- **Internet access:** Required for license retrieval and patch updates.

PCs with multi-core processors

Analyze 15.0 is designed to work with multi-core processors and will automatically utilize each core.

Installing Analyze 15.0

Download the Analyze 15.0 installer from:

<http://analyzedirect.com/free-trial/>

To begin the installation process:

1. Navigate to the folder where the Analyze installer was downloaded (Figure 1).
2. Right click on the installer and choose Properties.
3. Select the Permissions tab, ensure that the option to make the file executable is checked (Figure 2). Then close the window.
4. Next, double click the Analyze 15.0 installer file to initiate installation. The installer will open to a 'Welcome' screen. Click Next to begin the Analyze 15.0 installation (Figure 3).

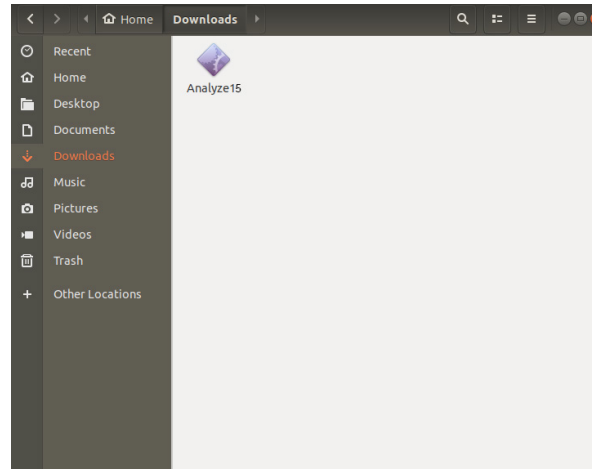


Figure 1

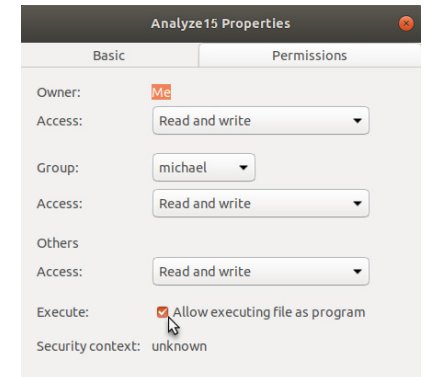


Figure 2



Figure 3

Installing Analyze 15.0 (continued)

7. License Agreement: Please read the End-User License Agreement for AnalyzeDirect Software (Figure 4) and select 'I accept' or 'I do not accept'. Note, if you select 'I do not accept', Analyze 15.0 will not be installed.
8. Click Next.
9. Destination Folder: The default location for installation is /home/BIR (You will need to have write permission for this directory). Click Next (Figure 5).

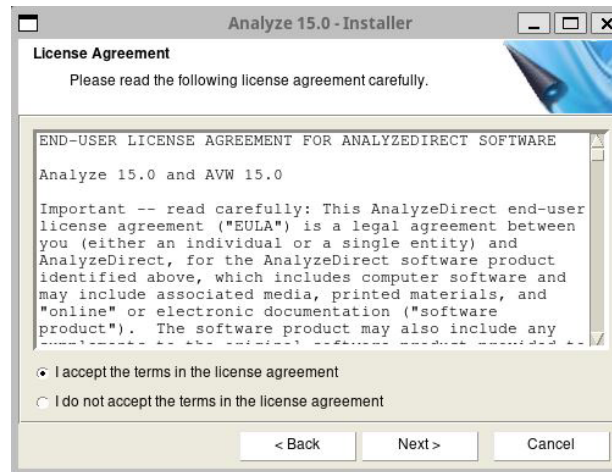


Figure 4

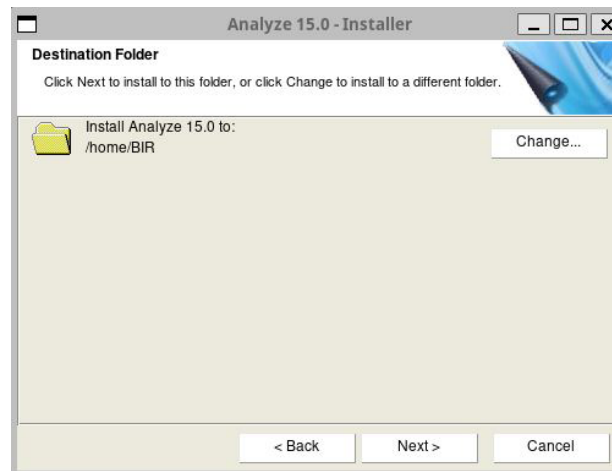


Figure 5

Installing Analyze 15.0 (continued)

11. Next, a Ready to Install the Program window will appear (Figure 6). Verify that the 'Current Settings' are accurate, then click Install.
12. Analyze 15.0 will now be installed in the specified folder.
13. When the Installer notifies you that installation is complete, click Finish. (Figure 7). Note that if the Start Analyze option is selected, Analyze 15.0 will automatically open. However, Analyze 15.0 requires a license in order to run. To request a license, please follow the instructions in the next section of this document; Analyze 15.0 License Types.

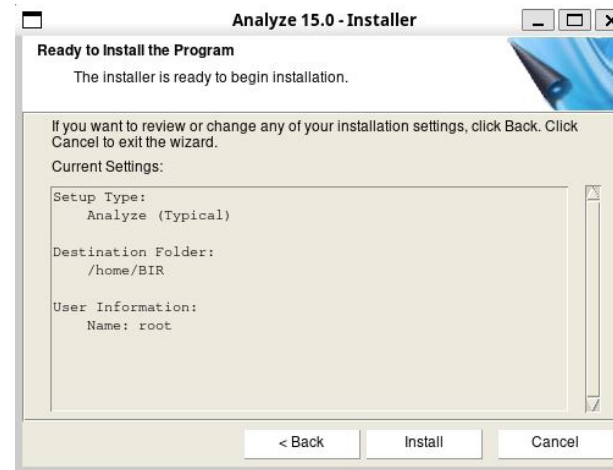


Figure 6



Figure 7



Analyze 15.0 Licenses

Analyze 15.0 License Types

There are two types of license available for Analyze 15.0: node-locked and floating.

A **node-locked license** will allow Analyze 15.0 to be run on one system only. With a node-locked license, all license file administration is handled local to the specific system.

A **floating license** allows one system to act as a license server, “floating” the license across a network to a client system. Any client system with access to the license server can check out a license if one is available. For example, if only one floating license is purchased, two or more client systems cannot run Analyze 15.0 simultaneously. Note - Analyze 15.0 needs to be installed on the license server AND all client systems.

For information on license pricing and options, please contact sales@analyzedirect.com.

Requesting a License File

A system-specific AnalyzeDirect.lic license file must be installed for Analyze 15.0 to run. You can obtain this license file from AnalyzeDirect. In order to generate your license, we must receive two pieces of information specific to the computer:

- 1) the Host Name and
- 2) the Host ID.

The instructions below will explain how to send this information to AnalyzeDirect.

Requesting a License File (continued)

1. Open Analyze 15.0 by double clicking on the executable in the \$BIR/bin directory, where \$BIR is the path to the directory where Analyze 15.0 is installed (e.g. /home/BIR).
2. If this is the first time you have opened Analyze 15.0 you will need to read and accept the End User License Agreement. (Figure 8)

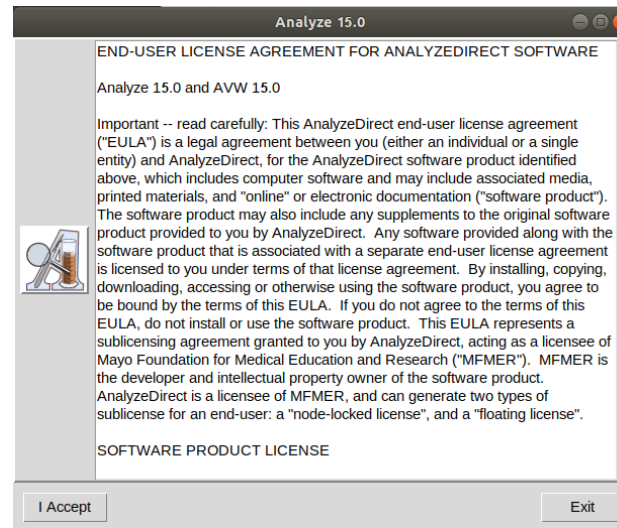


Figure 8

3. If you do not have a valid license an Analyze Validation Alert will be returned (Figure 9).
4. Click Open Analyze License Manager.

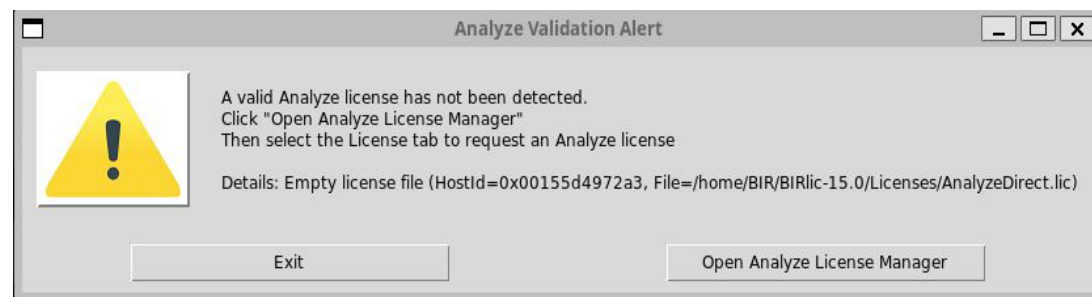


Figure 9

Requesting a License File (continued)

- The Analyze License Manager will open to the System Info tab. Click on the License tab and select Request License (Figure 10).

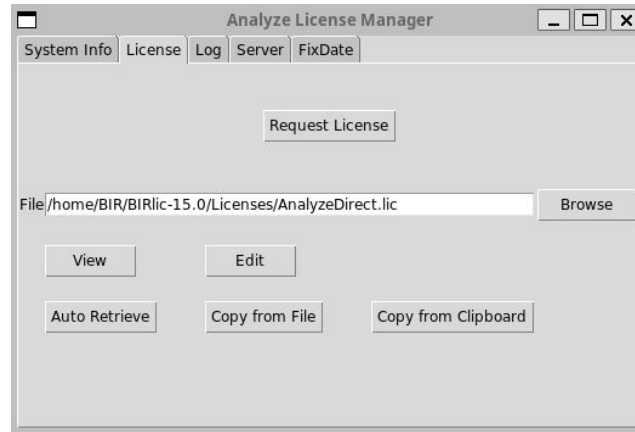


Figure 10

- Your Host Name and ID will be automatically populated. To submit a license request, you must enter your Company or Institution, Name, Email and Phone. Select any additional Apps and then click the Send Request button (Figure 11).

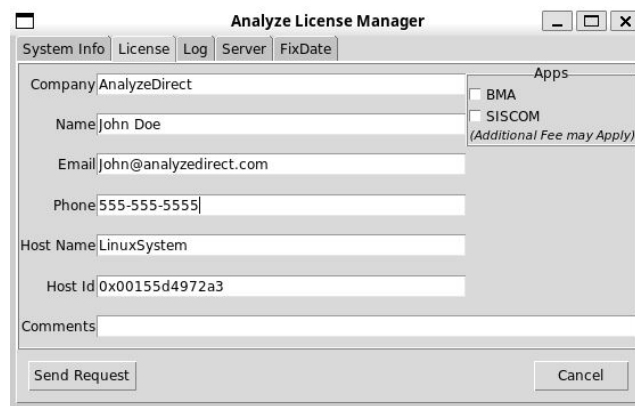


Figure 11

Requesting a License File (continued)

6. A window will be returned once your license request is submitted (Figure 12). Click OK to dismiss the window.

If you are unable to submit a request, please send the information in the license request form, along with your system type to: **validate@analyzedirect.com**.

Once AnalyzeDirect receives your system information, a license will be generated and you will be notified via e-mail. To retrieve and install your license, follow the instructions in that email or refer to the instructions for your license type (node-locked or floating) in the next section of this document.



Figure 12

Analyze 15.0 License File Installation

Installing a Node-Locked License

Once you have been notified by AnalyzeDirect that your AnalyzeDirect.lic license file has been generated:

1. Open Analyze 15.0 by double clicking on the executable in the \$BIR/bin directory, where \$BIR is the path to the directory where Analyze 15.0 is installed (e.g. /home/BIR).
2. If you do not have a valid license, an Analyze Validation Alert will be returned. Click Run License Manager. (Figure 13)
3. The Analyze 15.0 License Manager will open. Click on the License tab.
4. Click the Auto Retrieve button. A window will be returned telling you that your license file has been retrieved successfully (Figure 14). Click OK to dismiss the window.

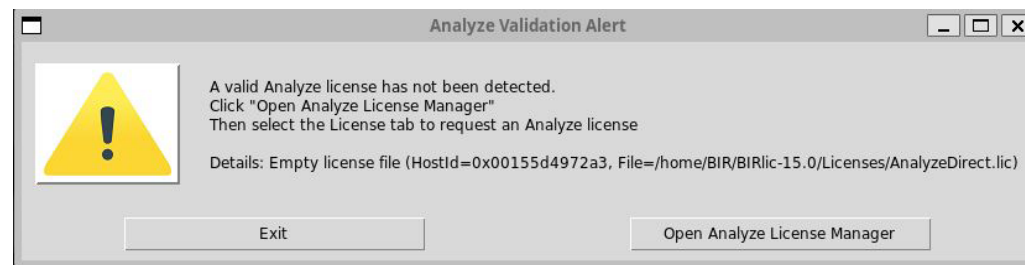


Figure 13

Note: If license retrieval is unsuccessful, please contact AnalyzeDirect at:

validate@analyzedirect.com

or

+1 913-338-2527.

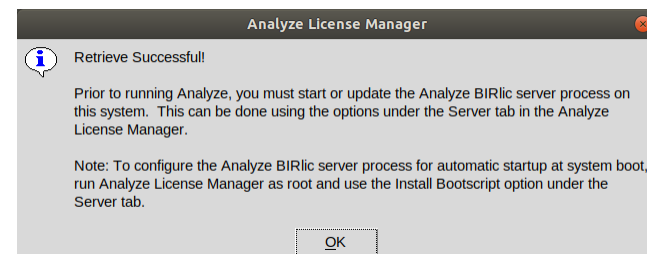


Figure 14

Installing a Node-Locked License (continued)

5. Select the Server tab to start the BIRlic license server and complete license installation.
6. To configure the BIRlic license server to startup automatically at system boot, select the Install Bootscript button (Figure 15).
7. Click Yes to confirm that you would like to install the bootscript (Figure 16).
8. A window will be returned informing you that the bootscript was copied, click OK to dismiss the window (Figure 17).

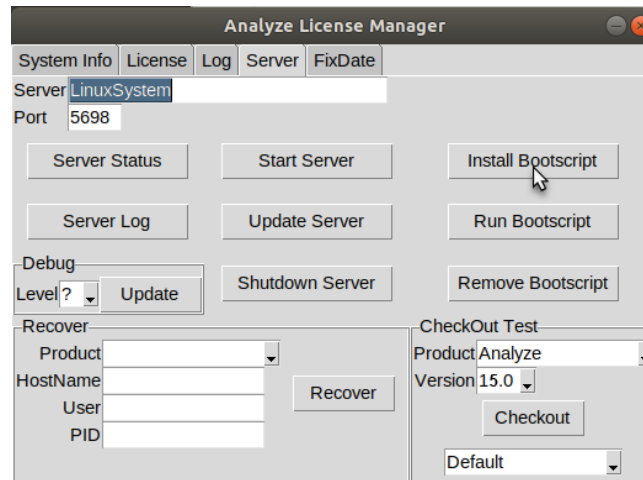


Figure 15

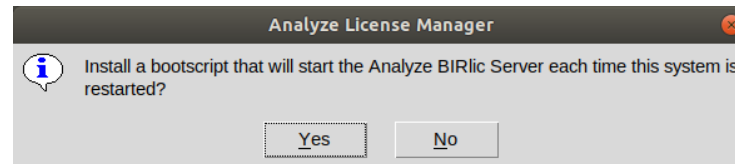


Figure 16

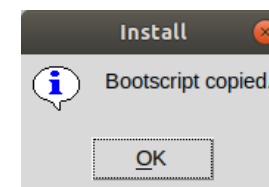


Figure 17

Installing a Node-Locked License (continued)

9. To execute the bootscript and start the license server, select the Run Bootscript button. (Figure 18)
10. Click Yes to confirm that you would like to run the bootscript. (Figure 19)
11. A window will be returned informing you that the server has been started. Click OK to dismiss the window. (Figure 20)
12. The license server process is running and Analyze 15.0 can now be used. To run Analyze, please refer to "Running Analyze 15.0".

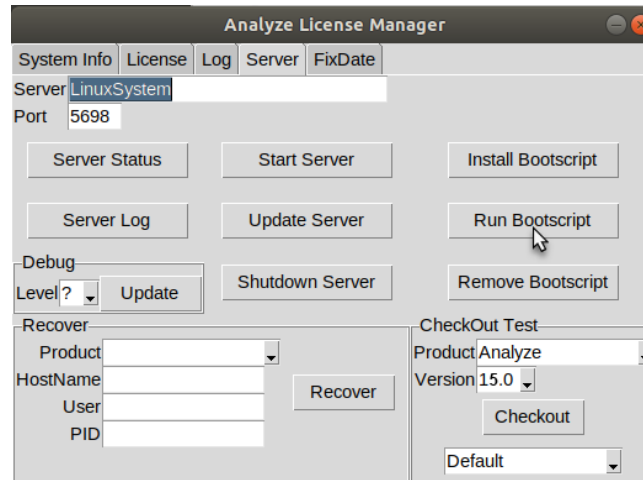


Figure 18

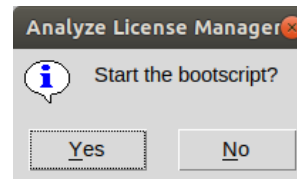


Figure 19

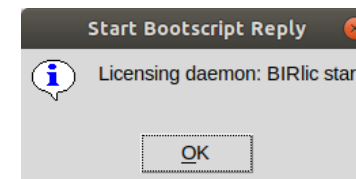


Figure 20

Installing a Floating License Server

Once you have been notified by AnalyzeDirect that your AnalyzeDirect.lic license file has been generated:

1. Open Analyze 15.0 by double clicking on the executable in the \$BIR/bin directory, where \$BIR is the path to the directory where Analyze 15.0 is installed (e.g. /home/BIR).
2. If you do not have a valid license an Analyze Validation Alert will be returned. Click Open Analyze License Manager (Figure 21).
3. The Analyze License Manger will open. Click on the License tab.
4. Click the Auto Retrieve button. A window will be returned telling you that your license file has been retrieved successfully (Figure 22). Click OK to dismiss the window.

Note: If license retrieval is unsuccessful, please contact AnalyzeDirect at: validate@analyzedirect.com or +1 913-338-2527

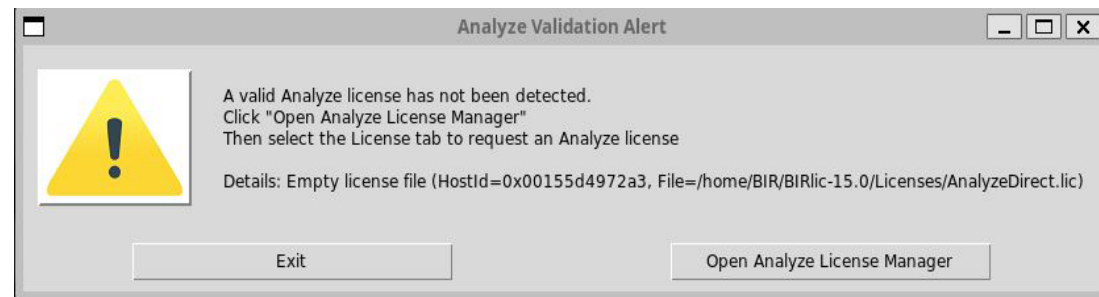


Figure 21

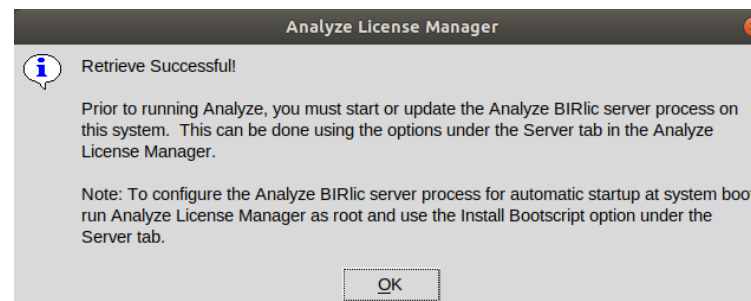


Figure 22

Installing a Floating License Server (continued)

5. Select the Server tab to start the BIRlic license server and complete license installation.
6. To configure the BIRlic license server to startup automatically at system boot, select the Install Bootscript button (Figure 23).
7. Click Yes to confirm that you would like to install the bootscript (Figure 24).
8. A window will be returned informing you that the bootscript was copied, click OK to dismiss the window (Figure 25).

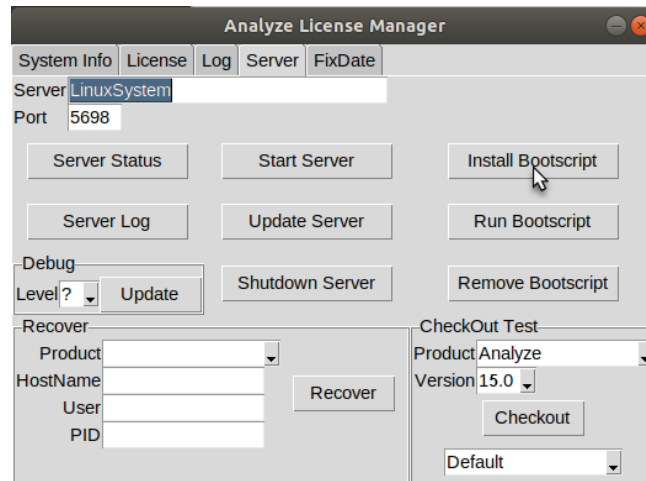


Figure 23

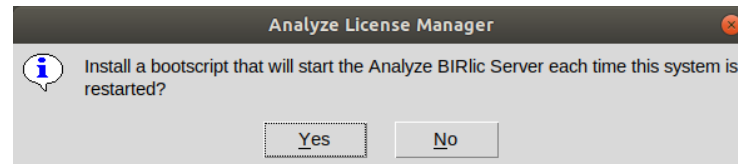


Figure 24

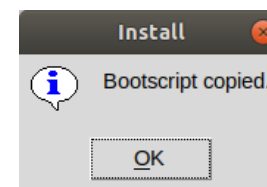


Figure 25

Installing a Floating License Server (continued)

9. To execute the bootscript and start the license server, select the Run Bootscript button. (Figure 26)
10. Click Yes to confirm that you would like to run the bootscript. (Figure 27)
11. A window will be returned informing you that the server has been started. Click OK to dismiss the window. (Figure 28)
12. Once the Bootscript has been run, the license server configuration is now complete and listening for license requests. To configure client systems, please continue to the next page. Exiting the License Manager will automatically start Analyze 15.0.

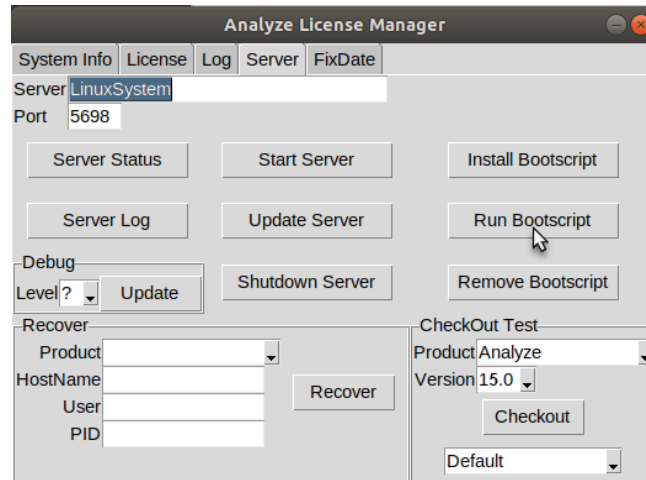


Figure 26

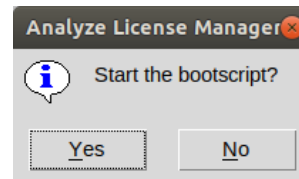


Figure 27

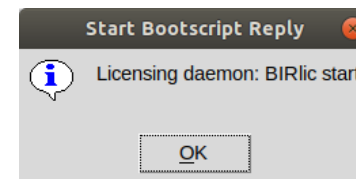


Figure 28

Installing a Floating License Client

1. Open Analyze 15.0 by double clicking on the executable in the \$BIR/bin directory, where \$BIR is the path to the directory where Analyze 15.0 is installed (e.g. /home/BIR).
2. If you do not have a valid license, an Analyze Validation Alert will be returned. Open Analyze License Manager. (Figure 29)
3. The Analyze License Manager will open. Click on the License tab.
4. Click the Auto Retrieve button. A window will be returned informing you that the license manager was unable to retrieve a license file for the system. Click Yes to confirm that it is a floating license client (Figure 30).
5. In the window returned, enter the Host ID for the floating license server system and then click Retrieve (Figure 31).
6. After successfully retrieving the license, no additional configuration is necessary on client systems. **Do not start the BIRlic license server on client systems.** Close the Analyze License Manager and Analyze 15.0 will automatically start.

If at any point you encounter difficulties getting your floating license server or client systems up and running, please email support@analyzedirect.com or call +1 (913) 338-2527.

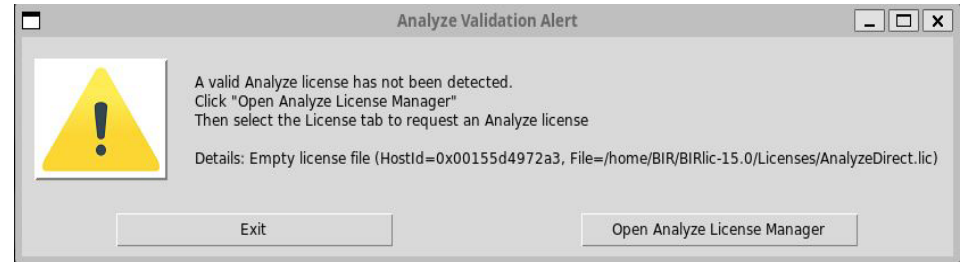


Figure 29

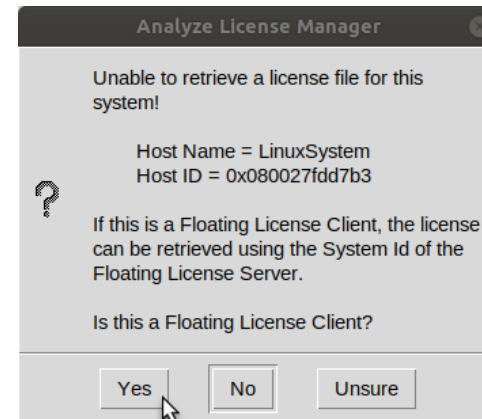


Figure 30

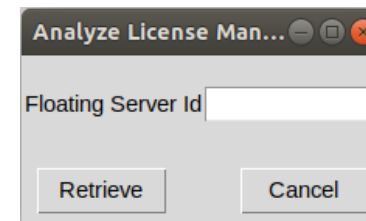


Figure 31



Running Analyze 15.0

Once Analyze 15.0 has been installed and the AnalyzeDirect.lic license has been retrieved and configured, the program is ready to run.

To open Analyze 15.0, double click on the executable in the \$BIR/bin directory, where \$BIR is the path to the directory where Analyze 15.0 is installed (e.g. /home/BIR).

Analyze 15.0 Updates

When Analyze 15.0 is opened for the first time, use the Analyze Update function to download and install the latest patch update. To access the update, right-click in the main Analyze window and select 'Analyze Update'. As with most software products, the process of bug fixing and minor maintenance between versions is an ongoing process. Analyze 15.0 has all such fixes available in the form of a patch. If a new patch is detected, the program will provide the option to download and automatically install the patch. It is recommended that you check for new patch updates the first time you run Analyze 15.0 and once each month thereafter.

Analyze 15.0 User's Guide

To quickly get up and running with Analyze 15.0, please refer to the Analyze 15.0 User's Guide. The User's Guide can be accessed from: <http://analyzedirect.com/analyze-support/>

Getting Help

If you need assistance getting up and running with Analyze 15.0, or if you need help using the software, please contact the Analyze 15.0 support team using the following methods:

- Call: +1 (913) 338-2527
- Email: support@analyzedirect.com
- Online: <http://analyzedirect.com/support-request/>