




Analyze 14.0

INSTALLATION GUIDE
FOR WINDOWS



Analyze 14.0

Installation Guide: Windows

Welcome to Analyze 14.0 page 3

Analyze 14.0 System Requirements page 3

Installing Analyze 14.0 page 4

Analyze 14.0 Licenses page 7

Analyze 14.0 License Types page 7

Requesting a License File page 7

Analyze 14.0 License File Installation page 11

Installing a Node-Locked License page 11

Installing a Floating License Server page 12

Installing a Floating License Client page 14

Running Analyze 14.0 page 16





Welcome to Analyze 14.0

Analyze 14.0 is a robust research software for advanced biomedical imaging visualization, manipulation and measurement. Analyze 14.0 has been carefully designed to provide an intuitive and facile interface. The software features integrated modules that provide access to complementary tools for fully interactive multi-dimensional display, processing, segmentation, registration and measurement of biomedical imaging modalities including MRI, CT, PET, SPECT, ultrasound and digital microscopy. The applications of Analyze 14.0 are broad in scope, wide in scale and penetrating in impact.

Analyze 14.0 System Requirements

If you want to run Analyze 14.0 on your Windows PC, here's what it takes:

- **Operating System:** Microsoft® Windows® 10, 64-bit, U.S. English, Professional Full Version.
- **Processor:** Intel i7 64-bit (x64).
- **Minimum RAM:** 16GB.

Optional Recommendations

- **Hard drive:** Solid State Drive.
- **Graphics card:** OpenGL 4.0 support recommended. CAD- or gaming quality NVidia card highly recommended.
- **Internet access:** Required for license retrieval and patch updates.

PCs with multi-core processors

Analyze 14.0 is designed to work with multi-core processors and will automatically utilize each core.

Installing Analyze 14.0

Download the Analyze 14.0 installer from:

<http://analyzedirect.com/free-trial/>

The InstallShield Wizard program will lead you through the complete Analyze 14.0 installation process. To begin the installation process:

1. It is recommended to close all active programs on your desktop.
2. Double-click on Analyze14.exe to initiate installation. If you cannot locate the installer look in your downloads folder.
3. If a Windows Defender SmartScreen notification is returned (Figure 1). Click the More Info link.
4. Click Run anyway. (Figure 2).
5. The InstallShield Wizard for Analyze 14.0 will automatically open
6. The InstallShield Wizard will automatically open to a 'Welcome' screen. Click Next to begin installation (Figure 3).

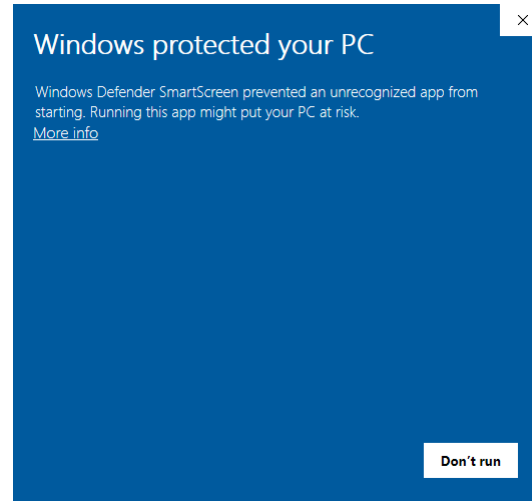


Figure 1

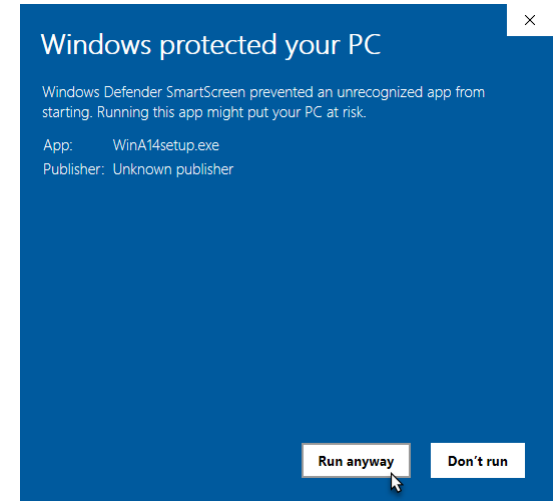


Figure 2

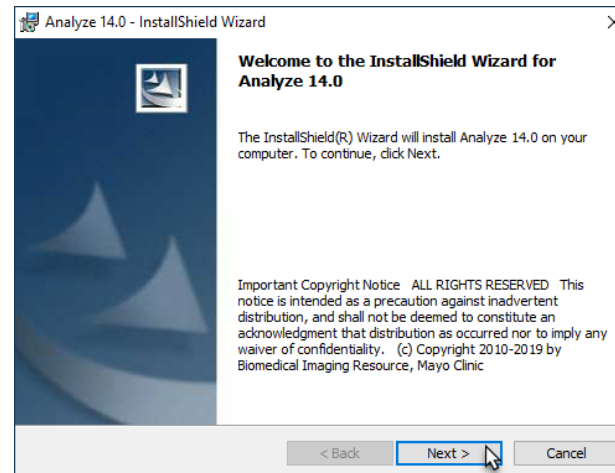


Figure 3

Installing Analyze 14.0 (continued)

7. License Agreement: Please read the End-User License Agreement for AnalyzeDirect Software and select 'I accept' or 'I do not accept'. If you select 'I do not accept', Analyze 14.0 will not be installed.
8. Click Next (Figure 4).
9. Destination Folder: The default location for installation is C:\BIR (when Windows is installed on the C: drive).
10. It is recommended to leave this as the destination folder. Click Next (Figure 5).

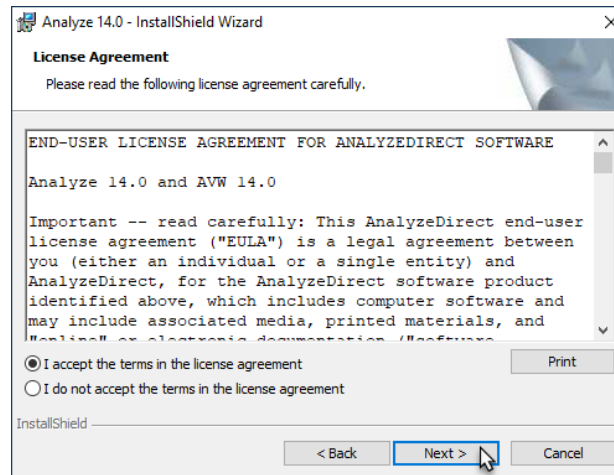


Figure 4

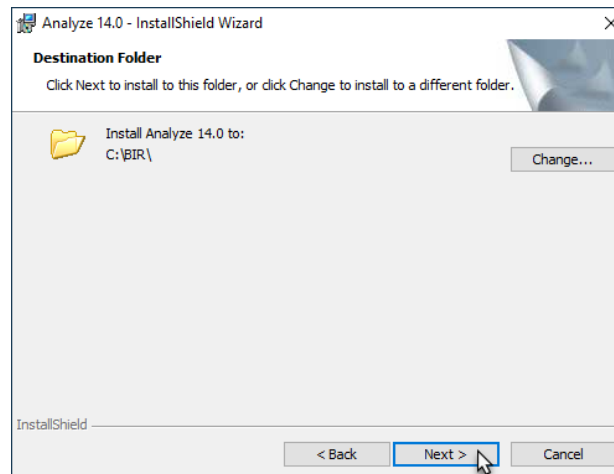


Figure 5

Installing Analyze 14.0 (continued)

11. Next, a Ready to Install the Program window will appear (Figure 6). Select who will use the application:
 - a. Anyone who uses this computer (All Users). This is the most common option.
 - b. Only for me.
12. Click Install.
13. Analyze 14.0 will now be installed (Figure 7) in the C:\BIR directory. During installation, an Analyze 14.0 shortcut icon will be placed on your Desktop.
14. When the InstallShield Wizard notifies you that installation is complete, click Finish (Figure 8).

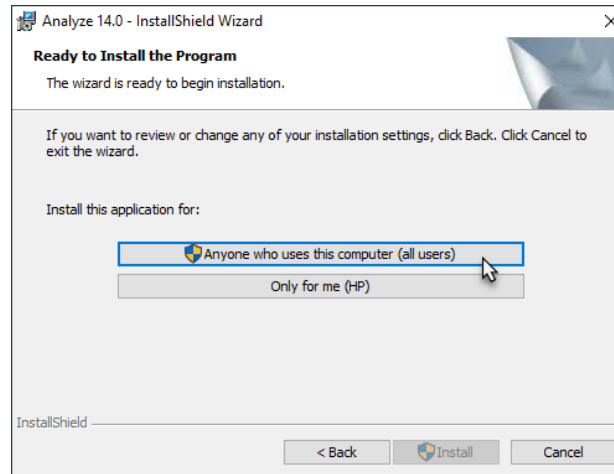


Figure 6

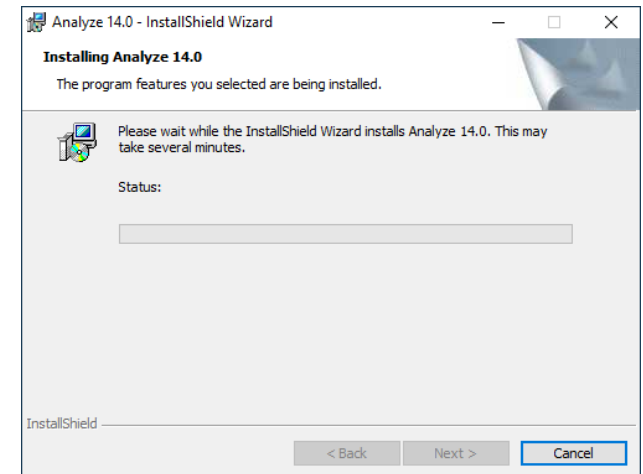


Figure 7

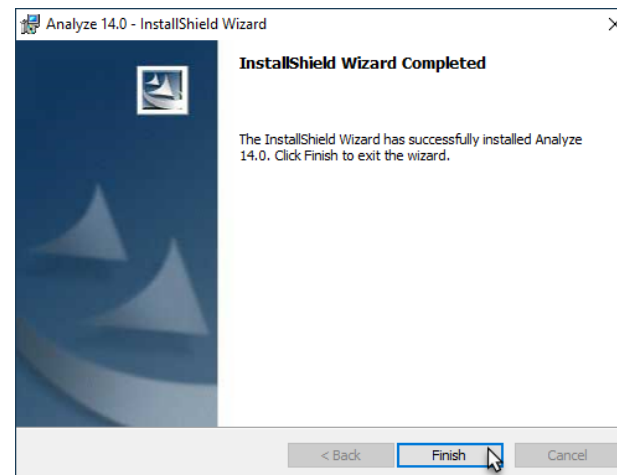


Figure 8



Analyze 14.0 Licenses

Analyze 14.0 License Types

There are two types of license available for Analyze 14.0: node-locked and floating.

A **node-locked license** will allow Analyze 14.0 to be run on one system only. With a node-locked license, all license file administration is handled local to the specific system.

A **floating license** allows one system to act as a license server, “floating” the license across a network to a client system. Any client system with access to the license server can check out a license if one is available. Note – if only one floating license is purchased, two or more client systems cannot run Analyze 14.0 simultaneously.

For information on license pricing and options, please contact sales@analyzedirect.com.

Requesting a License File

A system-specific AnalyzeDirect.lic license file must be installed for Analyze 14.0 to run. You can obtain this license file from AnalyzeDirect. In order to generate your license, we must receive two pieces of information specific to the computer:

- 1) the Host Name and
- 2) the Host ID.

The instructions below will explain how to send this information to AnalyzeDirect.

Requesting a License File (continued)

1. Open Analyze 14.0 using the desktop icon (Figure 9).
2. If this is the first time you have opened Analyze 14.0 you will need to read and accept the End User License Agreement (Figure 10).
3. If you do not have a valid license an Analyze Validation Error will be returned (Figure 11).
4. Click Run License Manager.

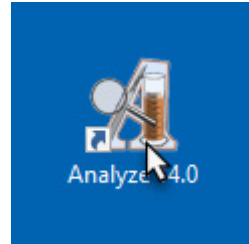


Figure 9

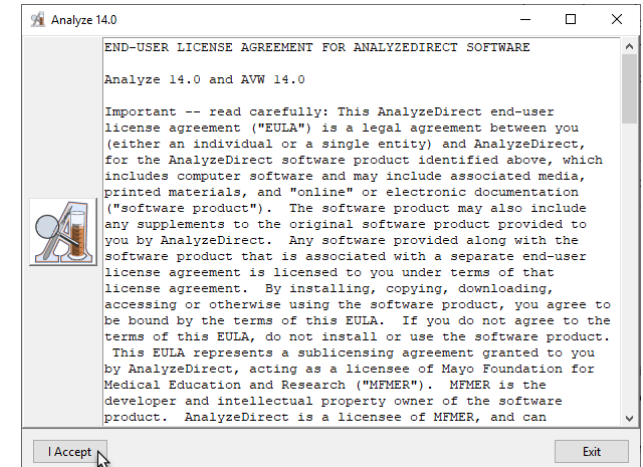


Figure 10

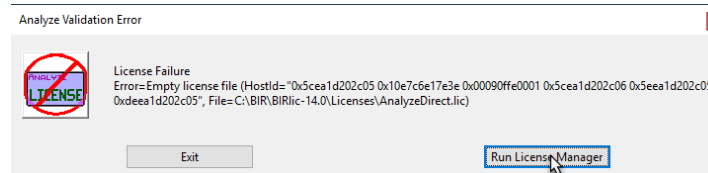


Figure 11

Requesting a License File (continued)

5. The Analyze License Manager will open to the System Info tab (Figure 12).
6. Click on the License tab.

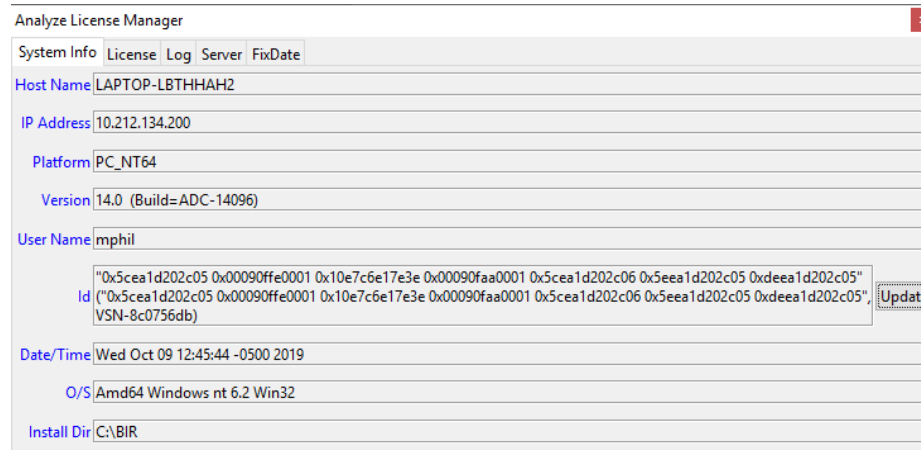


Figure 12

7. Click the Request License button (Figure 13).

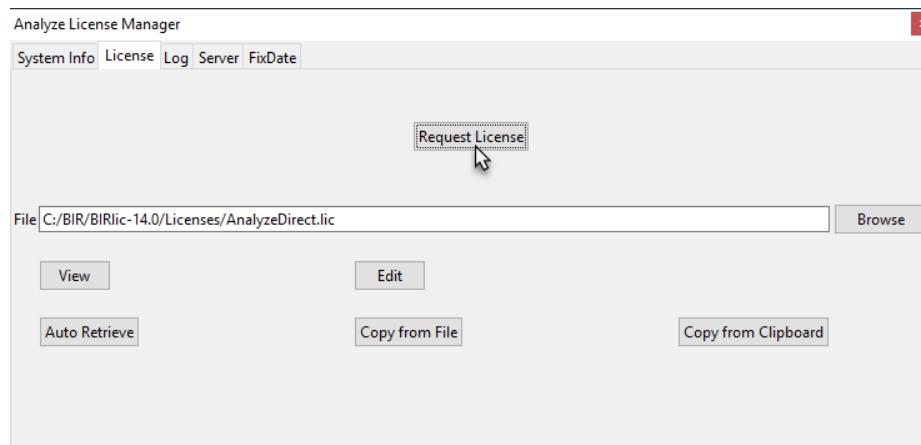


Figure 13

Requesting a License File (continued)

8. Your Host Name and ID will be automatically populated.
9. To submit a license request, you must enter your Company, Name, Email and Phone and then click the Send Request button (Figure 14).
10. A dialog will appear once your license request is submitted (Figure 15).
9. Click OK to dismiss the dialog.

If you are unable to submit a request, please send the information in the license request form, along with your system type to: **validate@analyzedirect.com**.

Once AnalyzeDirect receives your system information, a license will be generated and you will be notified via e-mail. To retrieve and install your license, follow the instructions in that email or refer to the instructions for your license type (node-locked or floating) in the next section of this document.

The screenshot shows the 'Analyze License Manager' application window. It has a menu bar with 'System Info', 'License', 'Log', 'Server', and 'FixDate'. The main area contains several text input fields: 'Company' (AnalyzeDirect), 'Name' (Michael Philcock), 'Email' (michael@analyzedirect.com), 'Phone' (913-653-8303), 'Host Name' (LAPTOP-LBTHHAH2), and 'Host Id' (0x5cea1d202c05). There is also a 'Comments' text area. On the right side, under the 'Apps' section, there are two checkboxes: 'BMA' (checked) and 'SISCOM' (unchecked), with a note '(Additional Fee may Apply)'. At the bottom, there are 'Send Request' and 'Cancel' buttons. A mouse cursor is pointing at the 'Send Request' button.

Figure 14

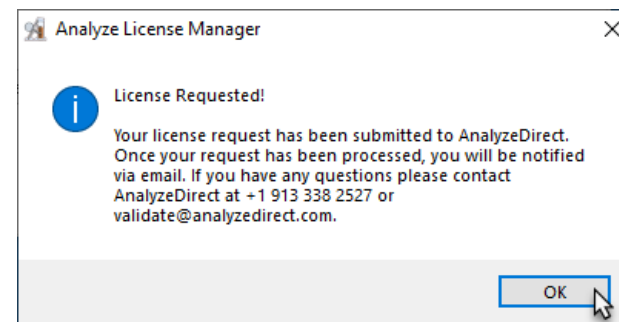


Figure 15

Analyze 14.0 License File Installation

Installing a Node-Locked License

Once you have been notified by AnalyzeDirect that your AnalyzeDirect.lic license file has been generated:

1. Open Analyze 14.0 using the desktop icon.
2. If you do not have a valid license an Analyze Validation Error will be returned. Click Run License Manager.
3. The Analyze License Manager will open. Click on the License tab.
4. Click the Auto Retrieve button. A window will be returned telling you that your license file has been retrieved successfully (Figure 16).

Note: If license retrieval is unsuccessful, please contact AnalyzeDirect at:

validate@analyzedirect.com

or

+1 913-338-2527

5. No further configuration is needed for a node-locked license on a Windows system.

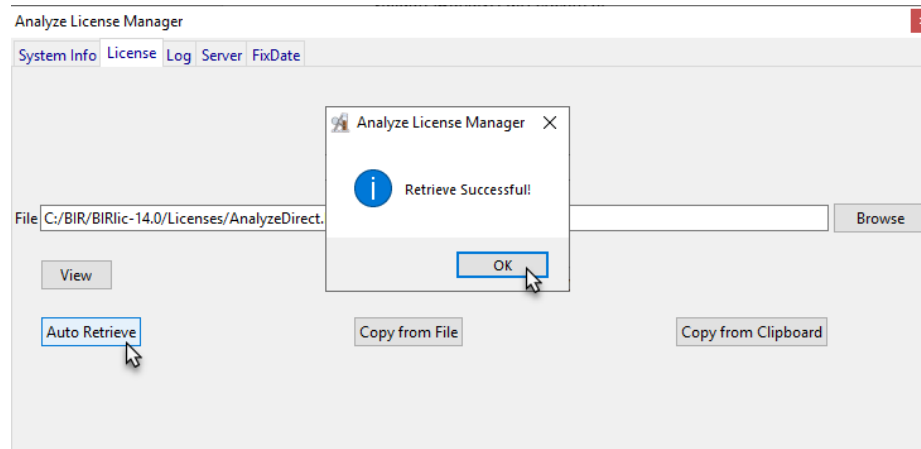


Figure 16

Installing a Floating License Server

Once you have been notified by AnalyzeDirect that your AnalyzeDirect.lic license file has been generated:

1. Right-click on the Analyze 14.0 desktop icon and select Run as administrator (Figure 17).
2. If you do not have a valid license an Analyze Validation Error will be returned. Click Run License Manager.
3. The Analyze License Manger will open. Click on the License tab.
4. Click the Auto Retrieve button. A dialog will be returned telling you that your license file has been retrieved successfully (Figure 18). To complete the license install process, start the BIRlic license server as described in the steps that follow.

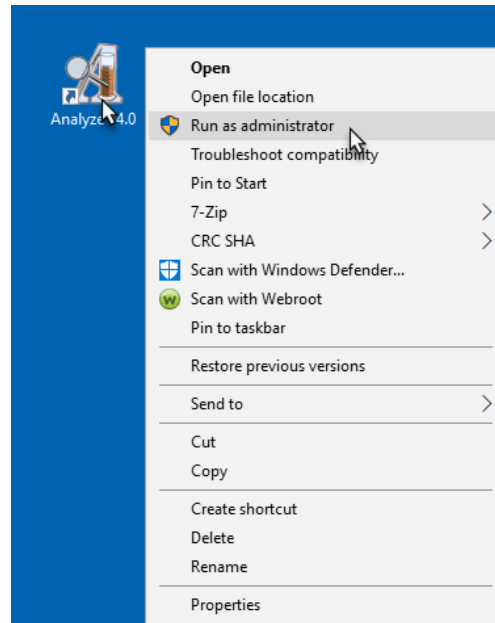


Figure 17

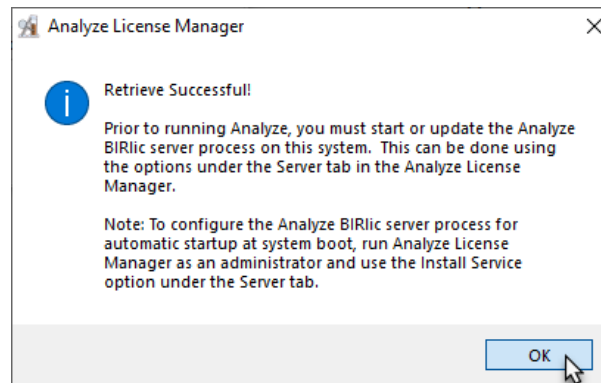


Figure 18

Installing a Floating License Server (continued)

5. Select the Server tab (Figure 19).
6. Click Install Service [1] to install the license server as a Windows Service that will automatically start the license server at system boot. Click Yes when prompted.
7. Once the Service has been installed, click Start Service [2] to start the license server service. Click Yes to start the 'Server as a Service' on this computer.

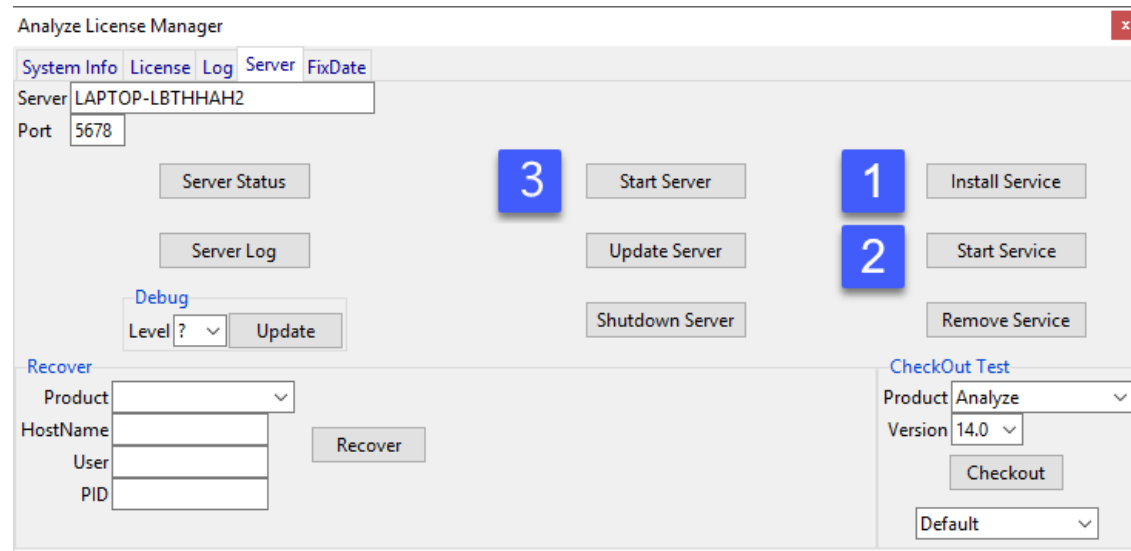


Figure 19

8. Once the Service has been started, click Start Server [3] to start the floating license server. Click Yes in the dialog box "Start a local (system name) License Server?", and the floating license server will start.
9. The license server configuration is complete. To configure client systems, please continue to the next page. Exiting the Analyze License Manager will automatically start Analyze 14.0.

Installing a Floating License Client

1. Open Analyze 14.0 using the desktop icon.
2. If a valid license is not yet installed an Analyze Validation Error will be returned. Click Run License Manager.
3. The Analyze License Manager will open. Click on the License tab.
4. Click the Auto Retrieve button (Figure 20).
5. A dialog box will be returned stating that the server does not match the server listed, click Yes to confirm that it is a floating license client (Figure 21).

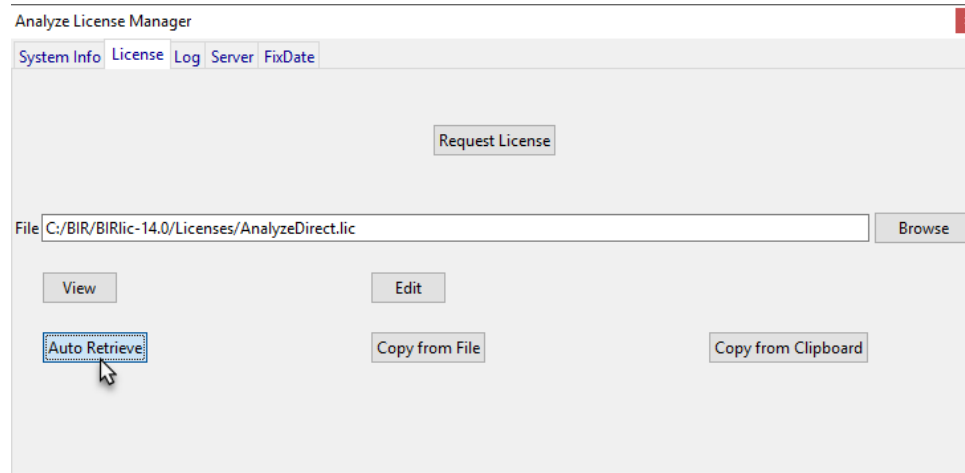


Figure 20

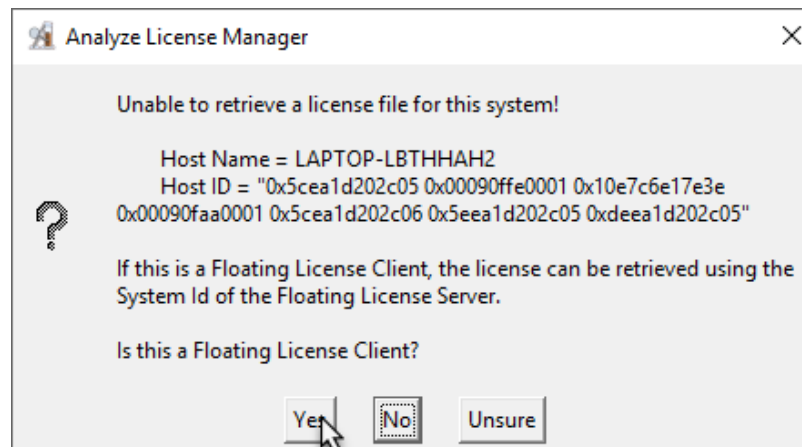


Figure 21

Installing a Floating License Client (continued)

6. In the window returned, enter the Host ID from the floating license server system (Figure 22).
7. Click Retrieve.
8. No additional configuration is necessary on client systems. The license server does not need to be started on client systems.
9. Close the Analyze License Manager. Analyze 14.0 will automatically start.

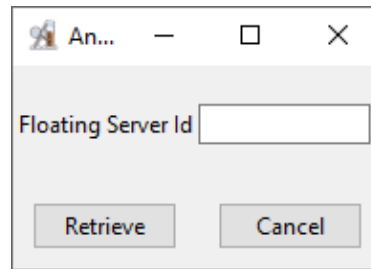


Figure 22

If at any point you encounter difficulties getting your floating license server or client systems up and running, please contact: support@analyzedirect.com.



Running Analyze 14.0

Once Analyze 14.0 has been installed and the AnalyzeDirect.lic license has been retrieved and configured, the program is ready to run.

To open Analyze 14.0, click on the Analyze 14.0 desktop shortcut icon. Analyze 14.0 will open and is ready for use.

Analyze 14.0 Updates

When Analyze 14.0 is opened for the first time, use the Analyze Update function to download and install the latest patch update. To access the update, right-click in the main Analyze window and select 'Analyze Update'. As with most software products, the process of bug fixing and minor maintenance between versions is an ongoing process. Analyze 14.0 has all such fixes available in the form of a patch. If a new patch is detected, the program will provide the option to download and automatically install the patch. It is recommended that you check for new patch updates the first time you run Analyze 14.0 and once each month thereafter.

Analyze 14.0 User's Guide

To quickly get up and running with Analyze 14.0, please refer to the Analyze 14.0 User's Guide. The User's Guide can be accessed from: <http://analyzedirect.com/analyze-support/>

Getting Help

If you need assistance getting up and running with Analyze 14.0, or if you need help using the software, please contact the Analyze 14.0 support team using the following methods:

- Call: +1 (913) 338-2527
- Email: support@analyzedirect.com
- Online: <http://analyzedirect.com/support-request/>