

## Applying a Filter to a Data Set

Download the microCT\_Bone.avw data set to follow along, from <https://analyzedirect.com/data>.

This exercise will show how to apply a median filter to a microCT bone data set.

Use the Input/Output module to load the microCT\_Bone.avw data set into the software.

Select the data set [1] and open Process [2].



## Applying a Filter to a Data Set (continued)

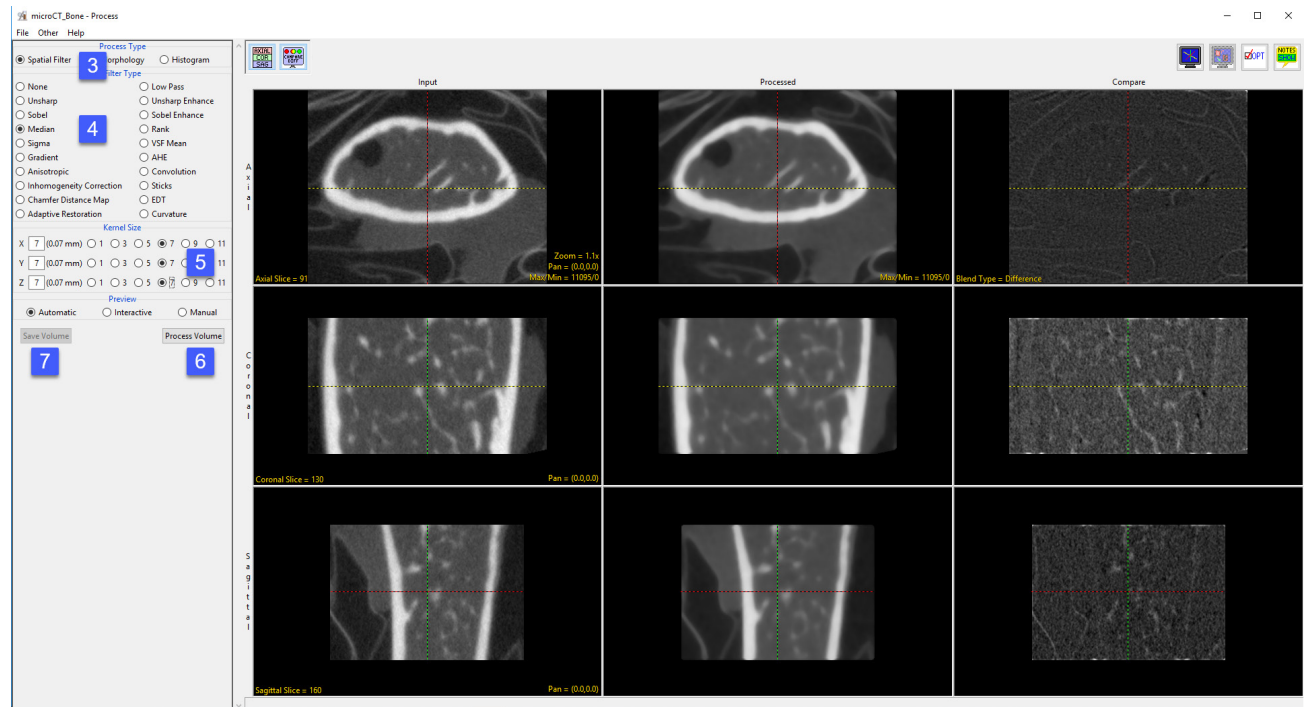
Choose Spatial Filter as the Process Type [3].

Choose a Filter Type [4]. Low Pass and Median filters are commonly used to smooth noisy data.

Set the Kernel Size in the X, Y and Z dimensions [5]. A kernel size of 7 X 7 X 7 is often used for microCT data acquired using a PerkinElmer scanner.

Click Process Volume [6].

Once the processing is complete, the Save Volume button will become available. Click Save Volume [7].



## Applying a Filter to a Data Set (continued)

In the Save Volume window, choose to replace the input data set with the processed data set, or to create a new data set [8].

The new data set can be saved in any workspace in the current project and renamed in the File checkbox. Check the Replace Input Volume with Processed Volume box if you want to further process the processed volume [9].

Click Save Volume [10].

