

Flip/Shift (continued)

Shifting Data

The shift option allows data to be shifted horizontally or vertically. Data shift may be necessary to correct for slice wraparound. In this example, the front slices of a sagittally-acquired MRI data set have wrapped around to the posterior side of the data set [1], and there are slices from the inferior side of the volume that have wrapped around to the superior side of the volume [2].



Download the Neuro_MRI_Sagittal data set to follow along <http://analyzedirect.com/data/>



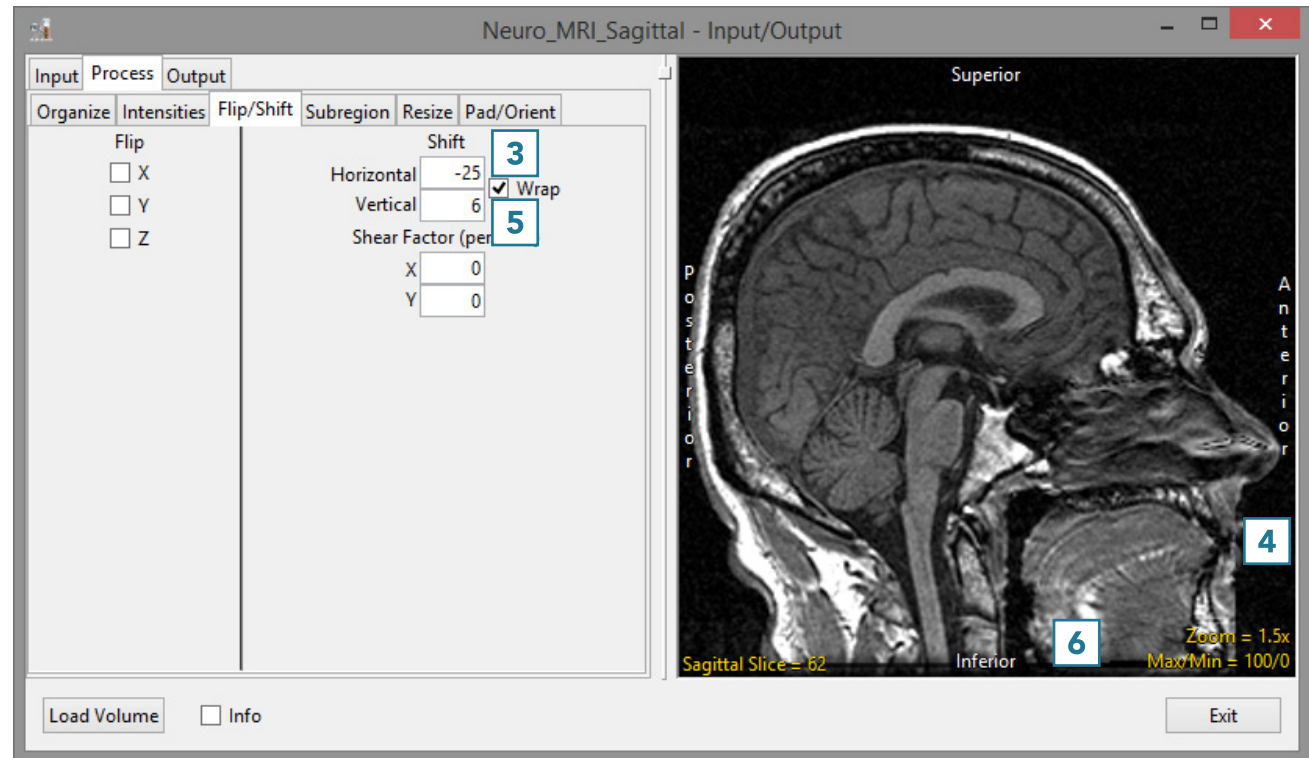
Flip/Shift (continued)

- To correct for the horizontal shift in slices, enter -25 in the Horizontal Shift field [3].

Note that the data will be shifted back 25 slices. The last 25 slices will automatically wrap around from the posterior side of the data set to the anterior side of the data set [4].

- To correct for the vertical shift in slices, enter 6 in the Vertical Shift field [5].

Note that the data will be shifted up 6 slices. The top 6 superior slices will automatically wrap around to the inferior side of the data set, since the Wrap checkbox is checked [6].



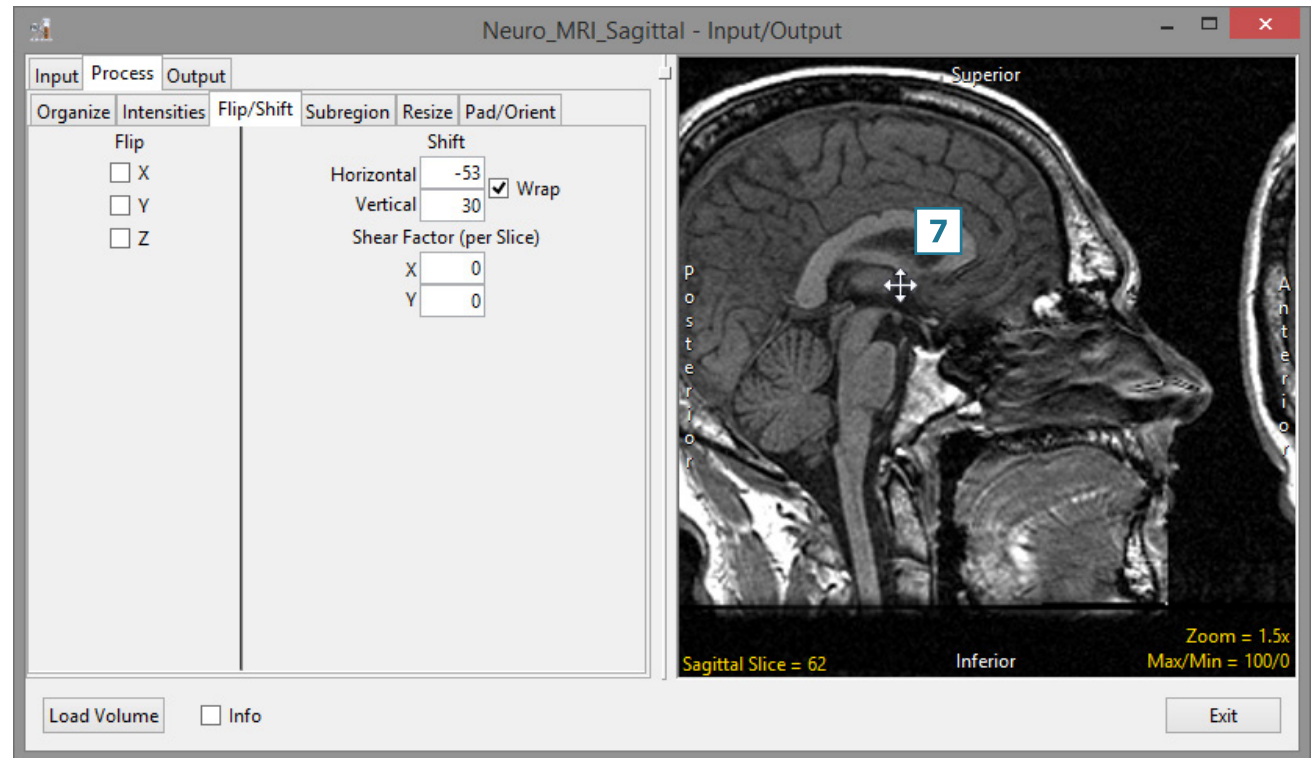


Shift Options Quick Reference

Shift	Axial	Coronal	Sagittal
Horizontal +	To left	To left	To anterior
Horizontal -	To right	To right	To posterior
Vertical +	To anterior	To superior	To superior
Vertical -	To posterior	To inferior	To inferior

Flip/Shift (continued)

- To shift data interactively, click on the image data. Note that the cursor will update; drag the data to a new location [7].



Flip/Shift (continued)

- Unchecking the Wrap checkbox [8] will prevent slices from being wrapped. [9].

