

# Pad/Orient

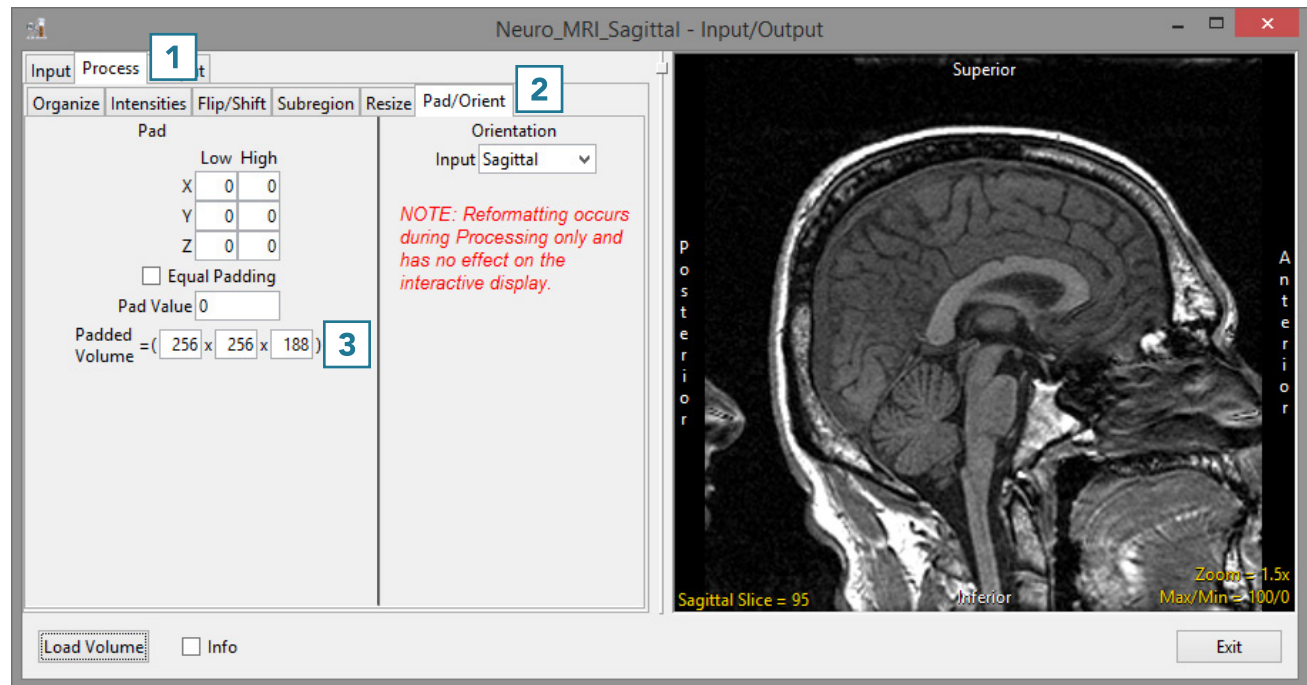
## Padding Data

The Pad/Orient option can be used to pad image data. This may be necessary to create a data set with certain dimensions or to make a data set isovolumetric (equal number of slices in each orientation).

- Open Input/Output.
- Navigate to and select the data set to be padded.
- Select Process [1] and Pad/Orient [2]
- Note the slice dimensions for the data are reported in the Padded Volume fields [3].



Download the Neuro\_MRI\_Sagittal data set to follow along <http://analyzedirect.com/data/>



## Pad/Orient (continued)

- To make the data set isovolumetric, update the appropriate Padded Volume field [4]. The Pad tool will try to apply an equal number of slices to pad the data in the pad axis [5].
- Users can also choose to pad all slices to either the Low or High field for the appropriate axis.
- Click Load Volume [6] to load the data.

