

The Input/Output Window

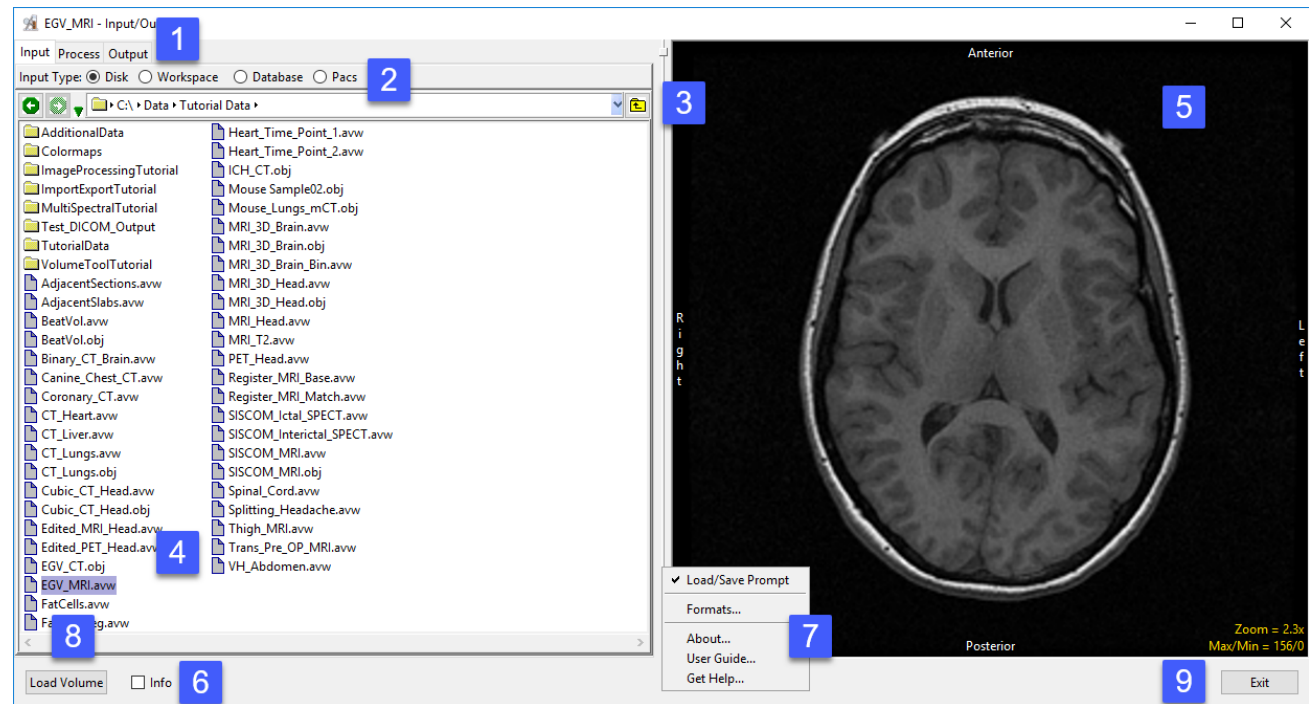
The Input/Output windows consists of the following nine sections:

1. Mode tabs: Allows user to select the mode for the Input/Output module from the following:

Input: Sets Input/Output to Load mode for loading data into Analyze.

Process: Provides tools for processing of image data, available for both load and save modes.

Output: Sets Input/Output to Save mode for exporting data from Analyze.



2. Input Types: Select the location to load data from or save data to.

Disk: Allows data to be selected and loaded from the system's local disks or network drives.

Workspace: Allows data to be selected and loaded from a workspace.

Database: Allows DICOM data to be imported into a database, selected and loaded into Analyze. For Save mode allows DICOM data to be stored in the database for export out of Analyze.

PACS: Allows for the configuration of Query/Retrieve (Q/R) of DICOM image data from PACS.

- 3. Directory selector:** Enables users to navigate to the location of the data to be loaded.
- 4. File selection area:** Allows users to select the desired data sets for loading.
- 5. Image display:** Provides a display for data review of the selected image file prior to loading.
- 6. Info option:** When checked displays the header information for the selected file.
- 7. Right-mouse options:**
 - Load/Save Prompt: Enable/Disable Load/Save Prompt (Figure 3.2)
 - Formats: Displays list of supported file formats and associated properties.
 - About - The About option opens the Analyze 15.0 About window. The About window provides detailed information about the system and the Analyze software. Selecting Done will close the About window.
 - User Guide - The User's Guide option opens this User Guide.
 - Get Help - Directs you to the AnalyzeDirect website support pages.
- 8. Load Volume:** Loads the selected file into the current workspace.
- 9. Exit:** Closes the Input/Output module.

