

Flip/Shift

Data Flipping

It may be necessary to flip data in order to orient it correctly. The Flip/Shift > Flip options allow users to flip data along any single axis or combination of axes.

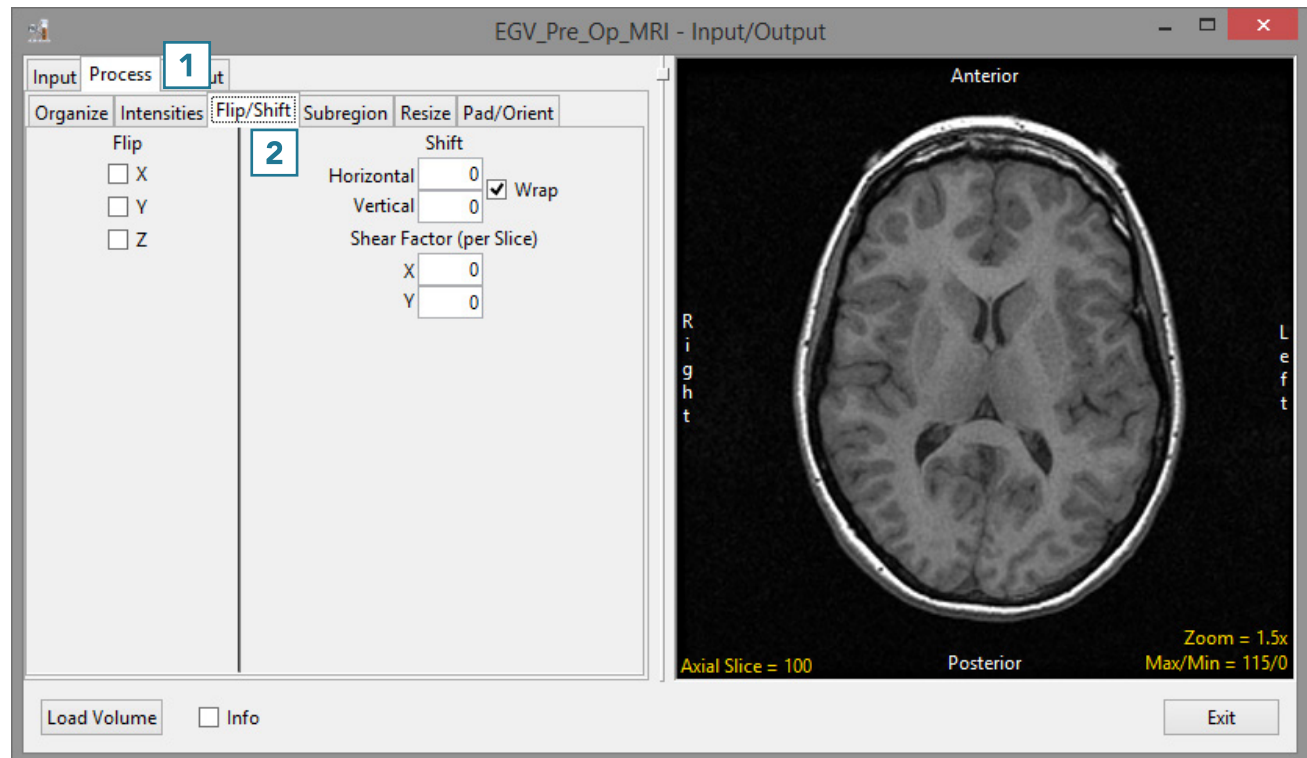
Once a flip checkbox is selected, the flip will be applied to the data and the display panel can be used to review. Unchecking the option will undo the flip. Flipping the data in only the X or Y direction will create a mirror image. If this is not the desired result, the data can be flipped in both the X and Y directions at once to prevent a mirror image from being created. To apply a flip:

- Open Input/Output.
- Navigate to and select the data set to be flipped and loaded.
- Select Process [1] and Flip/Shift [2].



Download the EGV_Pre_Op_MRI data set to follow along <http://analyzedirect.com/data/>

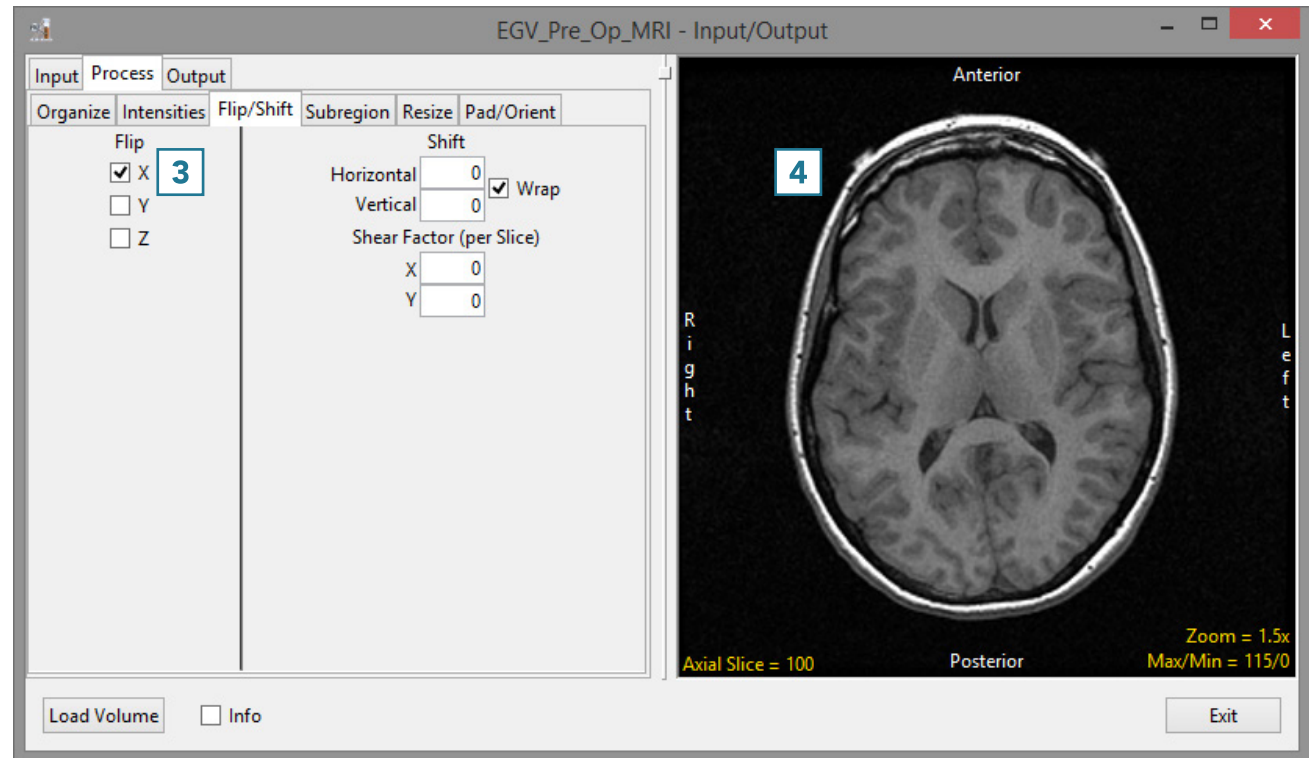
Axis	OUTCOME
X	Flips data horizontally, rotating about the vertical (Y) axis.
Y	Flips data vertically, rotating about the horizontal (X) axis.
Z	Changes the order of the slice data.



Flip/Shift (continued)

- Check the X Flip option [3].

Note the update to the data [4].

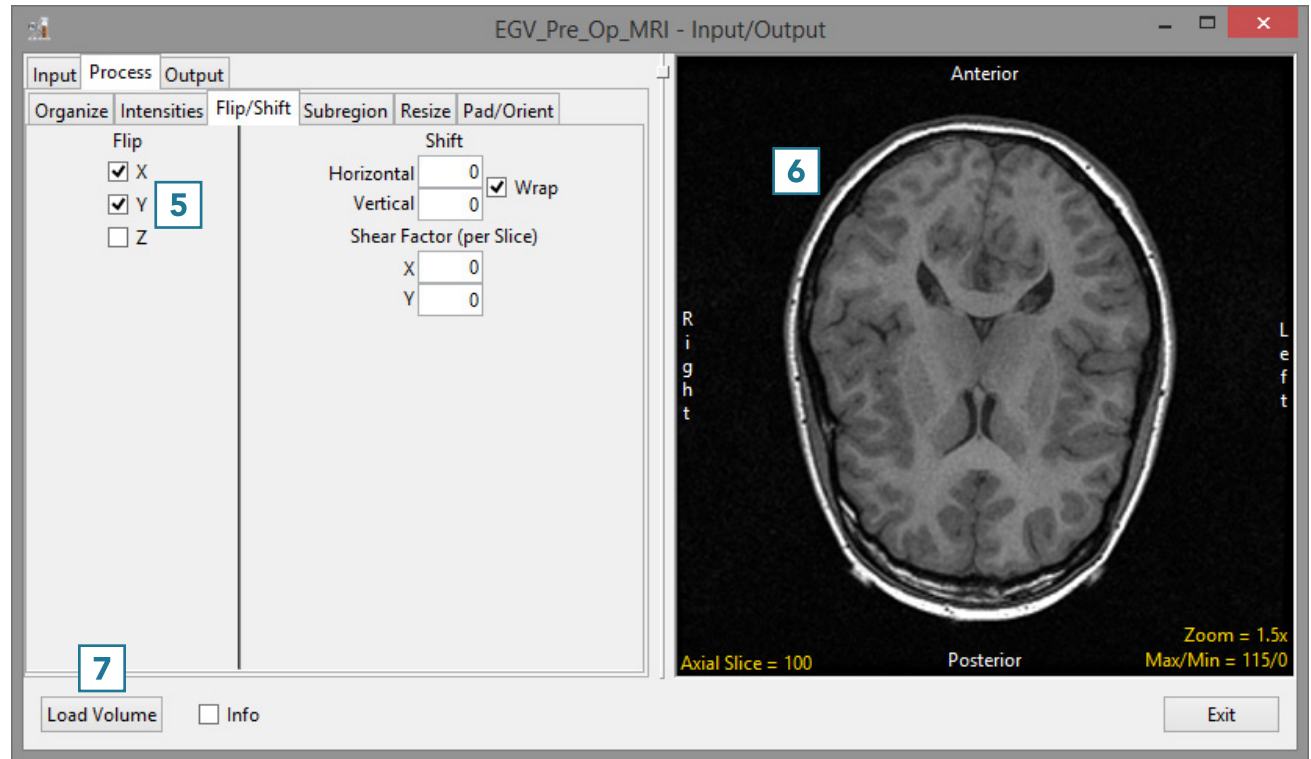


Flip/Shift (continued)

- Check the Y Flip option [5].

Note the update to the data [6].

- To load the data, click the Load Volume button [7].



Results of Flipping Data Along Any Combination of Axes

Flip	2D	3D	Flip	2D	3D
No flip			XY		
X			XZ		
Y			YZ		
Z			XYZ		