

Pad/Orient (continued)

Correcting an Orientation Flag

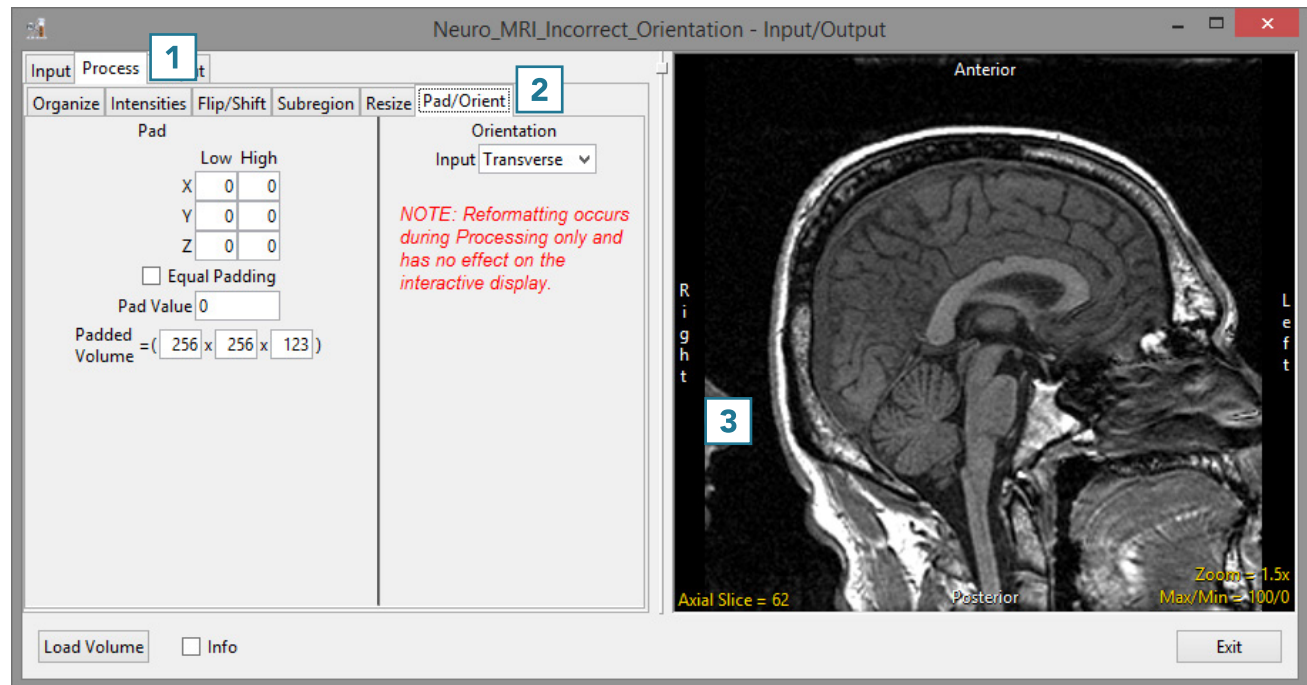
If a data set is loaded with an incorrect orientation flag, it will not orient correctly in other AnalyzePro modules. The Orientation option can be used to correct this.

- Open Input/Output.
- Navigate to and select the data set to be padded.
- Select Process [1] and Pad/Orient [2].

Note that the orientation of this sagittally-acquired data set is marked as axial. [3].



Download the Neuro_MRI_Incorrect_Orientation data set to follow along <http://analyzedirect.com/data/>



Pad/Orient (continued)

- To correct this, set the Orientation Input option to Sagittal [4].
- Note that the axis labels in the preview are corrected [5].
- Click Load Volume [6] to load the data.

