



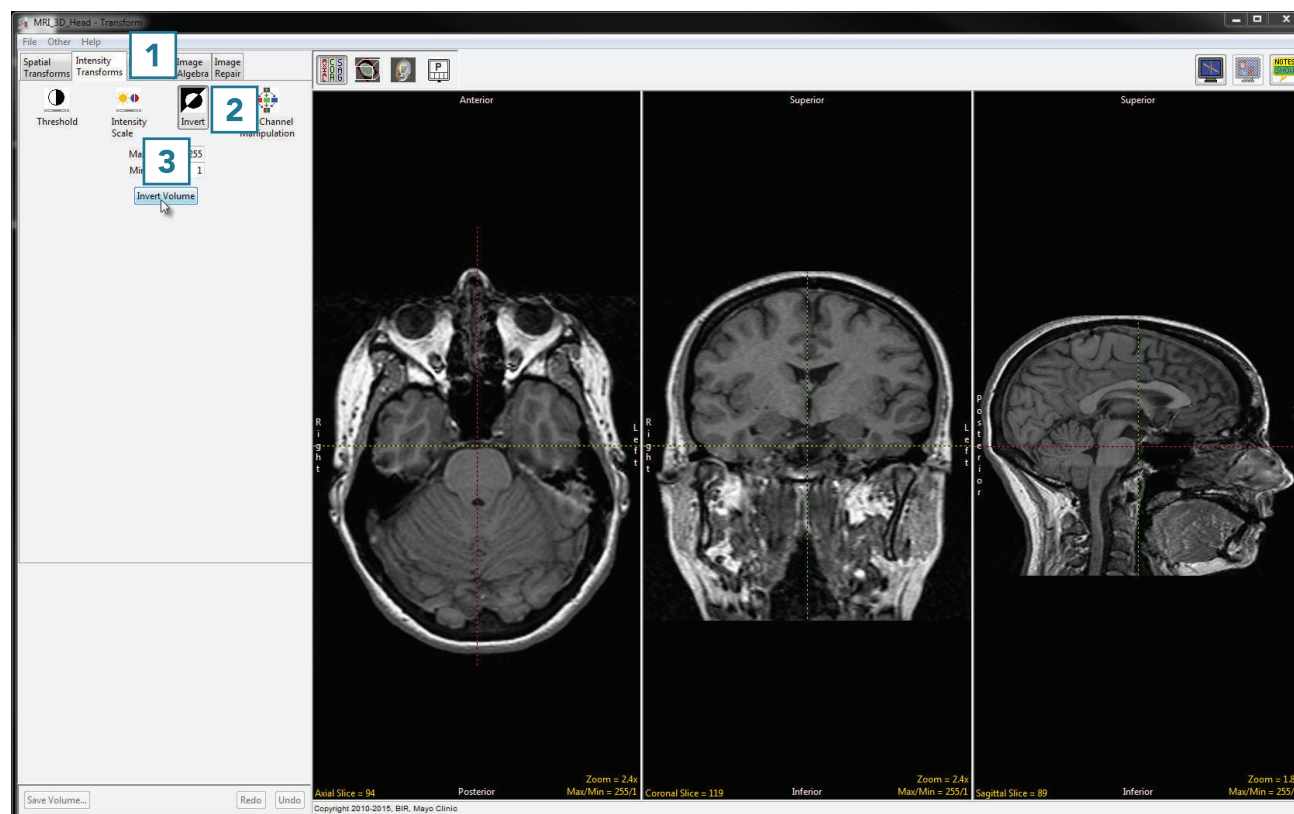
Invert

For certain segmentation and visualization applications, it is beneficial to view an inverted copy of the image data alongside the original grayscale data. Available Options are as follows:

Maximum: Allows users to specify the maximum intensity value for the inverted data set.

Minimum: Allows users to specify the minimum intensity value for the inverted data set.

Invert: When selected inverts the image data.



Inverting Data

To follow along, download the MRI_3D_Head data set from analyzedirect.com/data and load into Analyze using Input/Output.

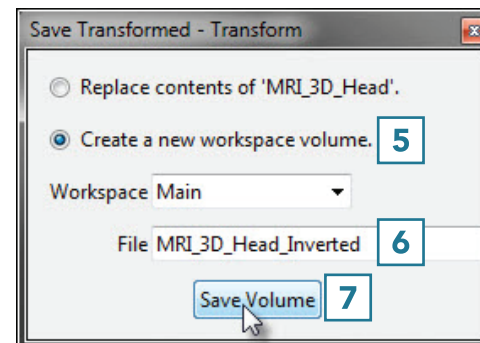
- Select the data set to invert and open Transform.
- Navigate to Intensity Transforms [1].
- Select the Invert tool [2].
- Click Invert Volume [3] to apply the inversion.

Using the Invert Tool (continued)

- Click Save Volume [4] to save the inverted data set.



- In the Save Transformed window, choose to create a new workspace volume [5].
- Rename [6] and click Save Volume [7].
- Close Transform.



Using the Invert Tool (continued)

- The inverse version of the input data can be useful for delineation of objects during segmentation. As the Segment module supports dual inputs, select the original MRI_3D_Head data set from the workspace and with the Ctrl key selected click on the inverted version just created, MRI_3D_Head_Inverted, and open Segment.
- Either input can be used for the segmentation of brain structures.

