

Selected Region

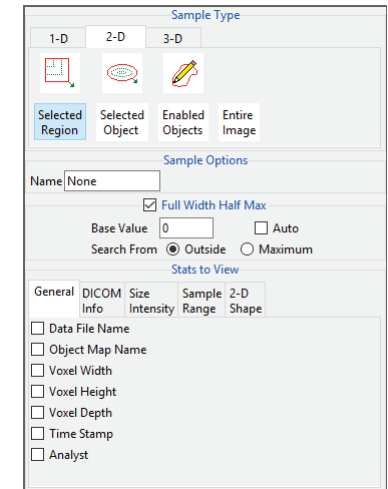
The selected region option allows users to sample a region of an object on a 2D slice. An object map must be loaded for this sampling option to be available.

Sample Options: Provides users with access to the following selected region options:

- **Name:** Allows users to assign a name for the selected region when reported to the log file.

Stats to View: The stats to view area allows users to enable and disable measurements and information reported to the stats log.

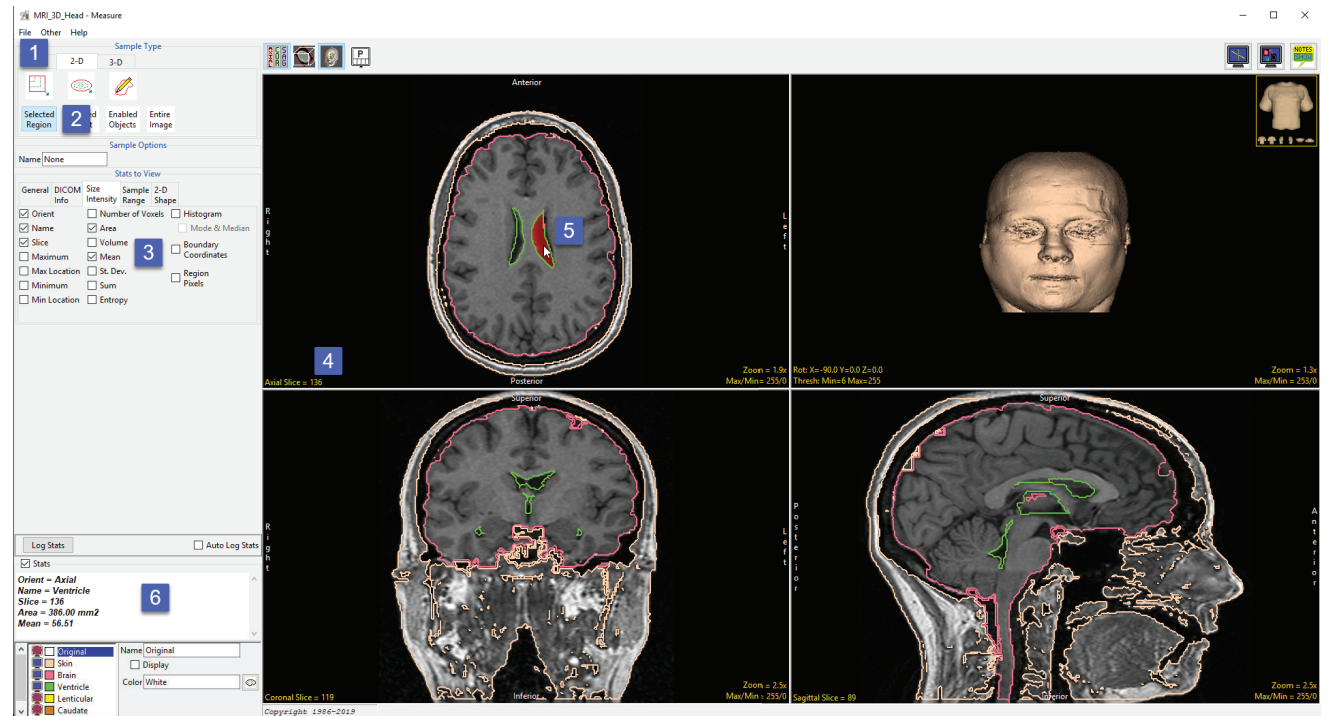
- **General:** Allows users to report general image data parameters in the stats log file. See General under Sample Point(s) > Stats to View for a full description of available options.
- **DICOM Info:** Allows users to report DICOM tag information if the data is in the DICOM format. See DICOM Info under Sample Point(s) > Stats to View above for a full description of available options.
- **Size Intensity:** Allows users to report an array of size intensity information and measurements. Refer to the size Intensity description for Sample 2-D Rectangle for a description of all available options.
- **Sample Range:** Allows users to sample voxels within the defined region based on a minimum and maximum intensity range. Refer to the Sample Range description for Sample 2-D Rectangle for a description of all available options.
- **2-D Shape:** Allows users to report 2-D shape measurements for the defined region. Refer to the 2-D Shape description for Sample 2-D Rectangle for a description of all available options.



Making Measurements using Selected Region

Download the MRI_3D_Head.avw data set from analyzedirect.com/data to follow along.

- Open Input/Output and load MRI_3D_Head.avw into Analyze. Select MRI_3D_Head and open Measure.
- Select File > Load Object Map and load the MRI_3D_Head.obj file.
- Select the 2D Sample Type [1] and choose Selected Region [2].
- In the Stats to View area check all required measurements [3] in the stats review area.
- Move to axial slice 136 [4]. Click in the ventricle object on the left side to sample [5].
- Selected measurements will be reported for the region in the stats review area [6].



To sample all of the ventricle on this slice please refer to the Selected Object sampling type on the following pages.