



Process: Transforming Data

Spatial- and intensity-based transformations can be applied to the data while loading to or saving from Analyze 14.0. These transformation options are available from Input/Output > Process, once a data set is selected.

Organize

MultiVolume Override

Sometimes image data may not be organized as expected. For example, two 3D data sets may be concatenated into a single 3D data set, requiring the data to be split into two volumes. Furthermore, the data may be interleaved. The MultiVolume Override options provide a utility to efficiently reorganize such problematic data while loading.

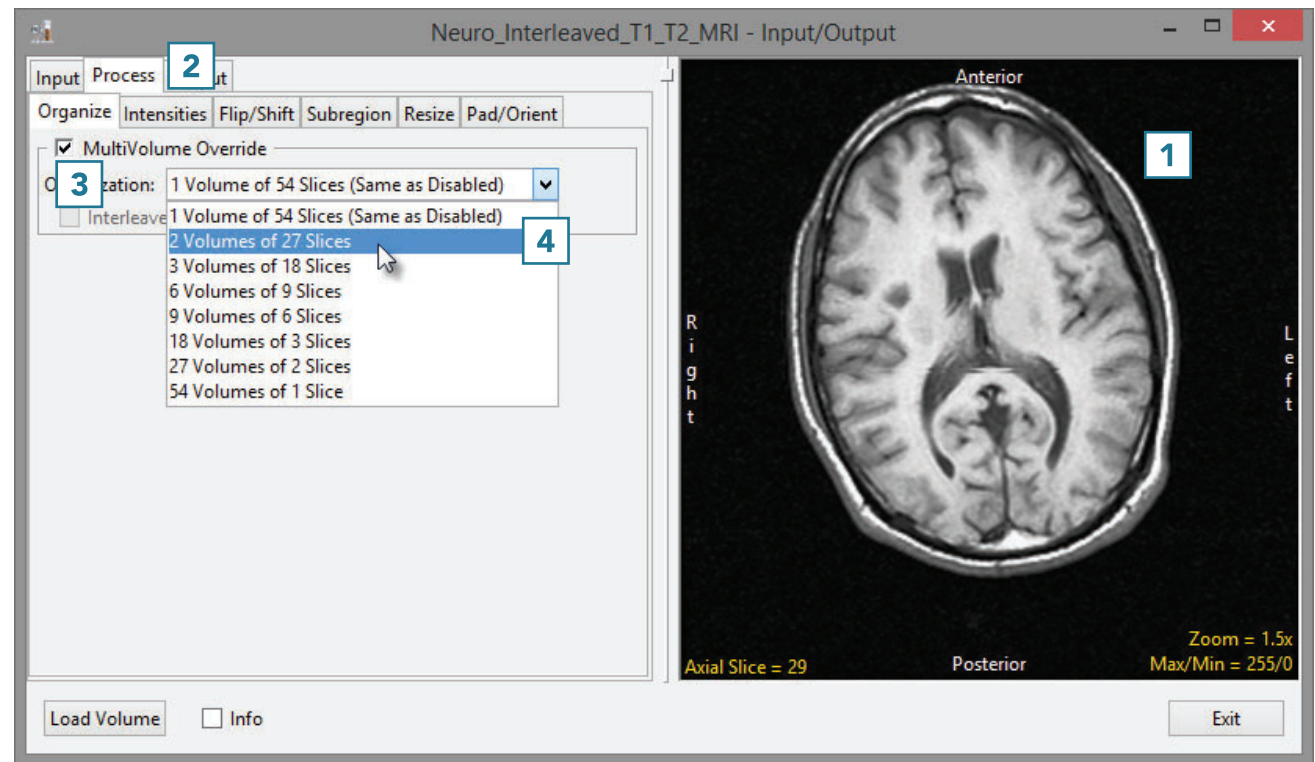
Organize (continued)

- Open the Input/Output module.
- Navigate to the data and select the data set you want to load and transform.
- Note that the data will be displayed [1].
- Select the Process tab [2].
- Under Organize, check the MultiVolume Override option. [3]
- All possible data reorganization options will be available from the drop-down menu. [4]

We know that in this example the 54-slice data set is comprised of a T1 and a T2 data set, each containing 27 slices. Select the appropriate option from the drop-down menu: 2 Volumes of 27 Slices [4].



Download the Neuro_Interleaved_T1_2_MRI data set to follow along <http://analyzedirect.com/data/>



Organize (continued)

- The data has now been changed from a single 3D data set containing 54 slices to a 4D multivolume made up of two 3D data sets, each containing 27 slices. Hold the cursor over the image and use the middle mouse wheel to scroll through the data. Note that in this example, the T1 and T2 image data is interleaved so the current volume will alternate between T1 and T2 slices.
- To correct for the interleaved image data, check the Interleaved option [5].
- Scroll through the image data for volume 1. This will now display only the T1 image data.
- Use the Volume option [6] to change to volume 2 and scroll through the data. Only T2 image data will be displayed.
- Click Load Volume [7] to load the corrected image data.

