

## Loading Multiple 2D Files as a 3D Volume

Frequently, scanner vendors do not support exporting data in a single 3D format and choose instead to export data as a series of 2D images such, as TIFF or BMP. To load a series of 2D images into the software as a single 3D volume:

Open Input/Output.

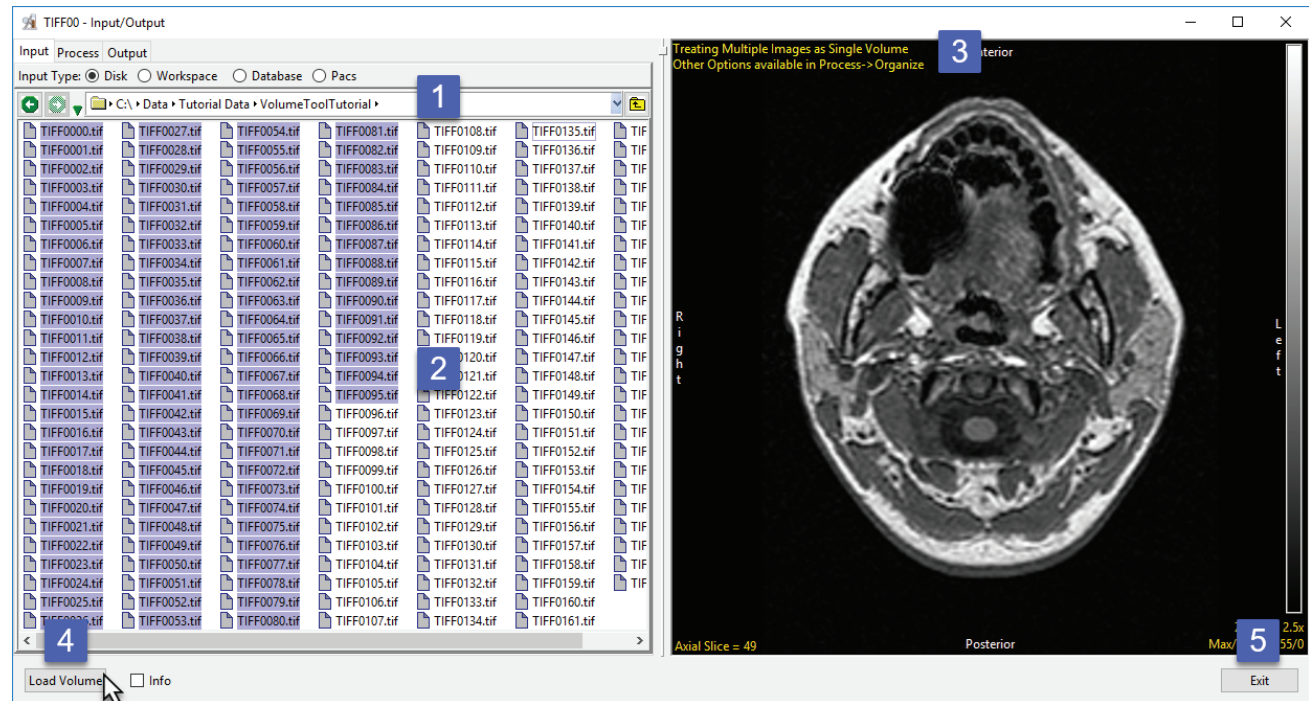
Navigate to the series of 2D image files. [1]

To select a range of Image files, first choose the first Image in the series, then press the Shift key and finally select the last data set in the range [2]. Alternatively, select ctrl + a to select all files in the directory.

By default, all selected images will be treated as a single volume [3]. Other load options, such as loading a series of 2D images individually, are available from Process > Organize.

Click Load Volume [4] to load the data into the software as a single 3D volume.

Click Exit [5] to close Input/Output.



## Loading Multiple 3D Volumes

To load multiple 3-D volumes into the program simultaneously:

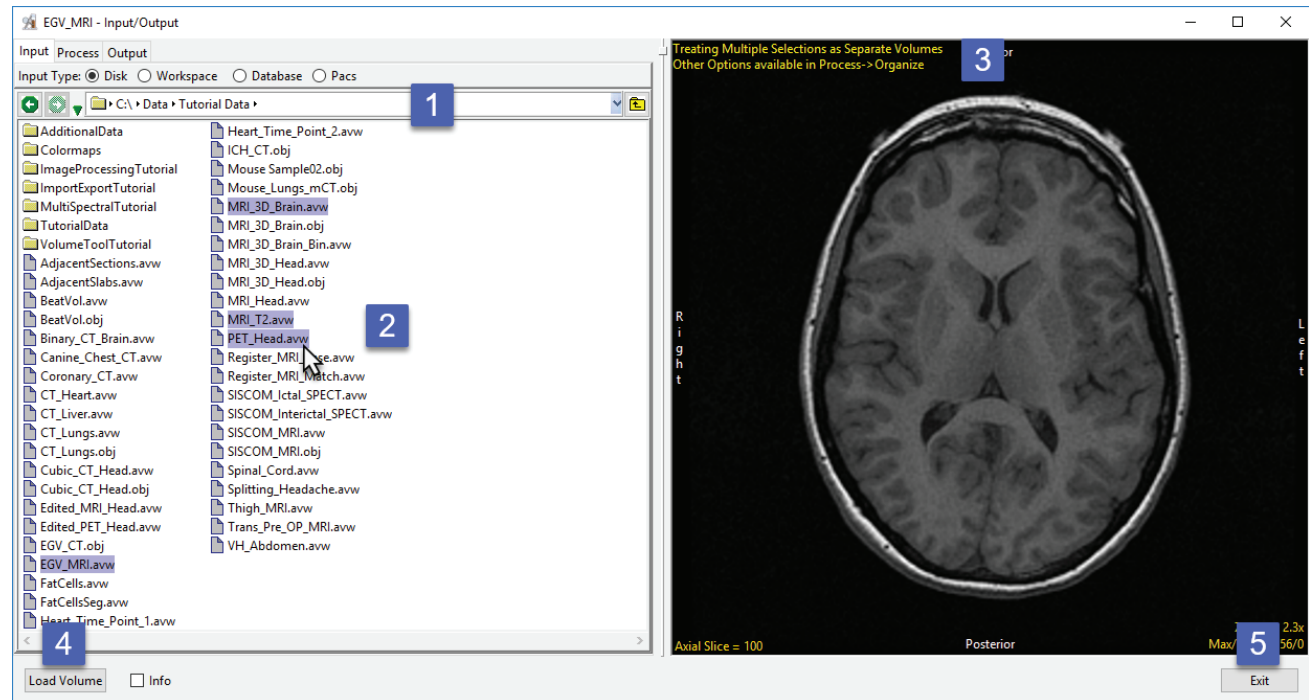
Open Input/Output.

Navigate to the location of the image data. [1].

To select multiple data sets, hold down the Ctrl key and select each data set to load. [2].

If the data select has different properties (spatial dimensions, volume sizes, data types, etc.) the module will recognize this and treat the selected data sets as separate volumes [3]. Note that if the properties of the selected data sets are the same the module will default to load as a single multivolume. Click Load Volume to load all selected volumes.

Click Exit to close the module [4].



## Loading Multiple 3D Volumes as a 4D Volume

Analyze 14.0 supports 4D image data sets or multivolumes. Multivolumes are data sets that consist of multiple 3D volumes. Multivolume loading is automatically enabled when loading multiple volumes that have the same Voxel Dimensions and Datatype. To load a series of volumes as a multivolume:

- Open Input/Output.
- Navigate to the location of the image data. [1].
- To select multiple data sets, hold down the Ctrl key and select each data set to load. [2].
- As these data sets have the same properties the module will default to loading the data as a single multivolume [3].
- Click Load Volume to load all selected volumes [4].
- Click Exit to close the module [5].

