

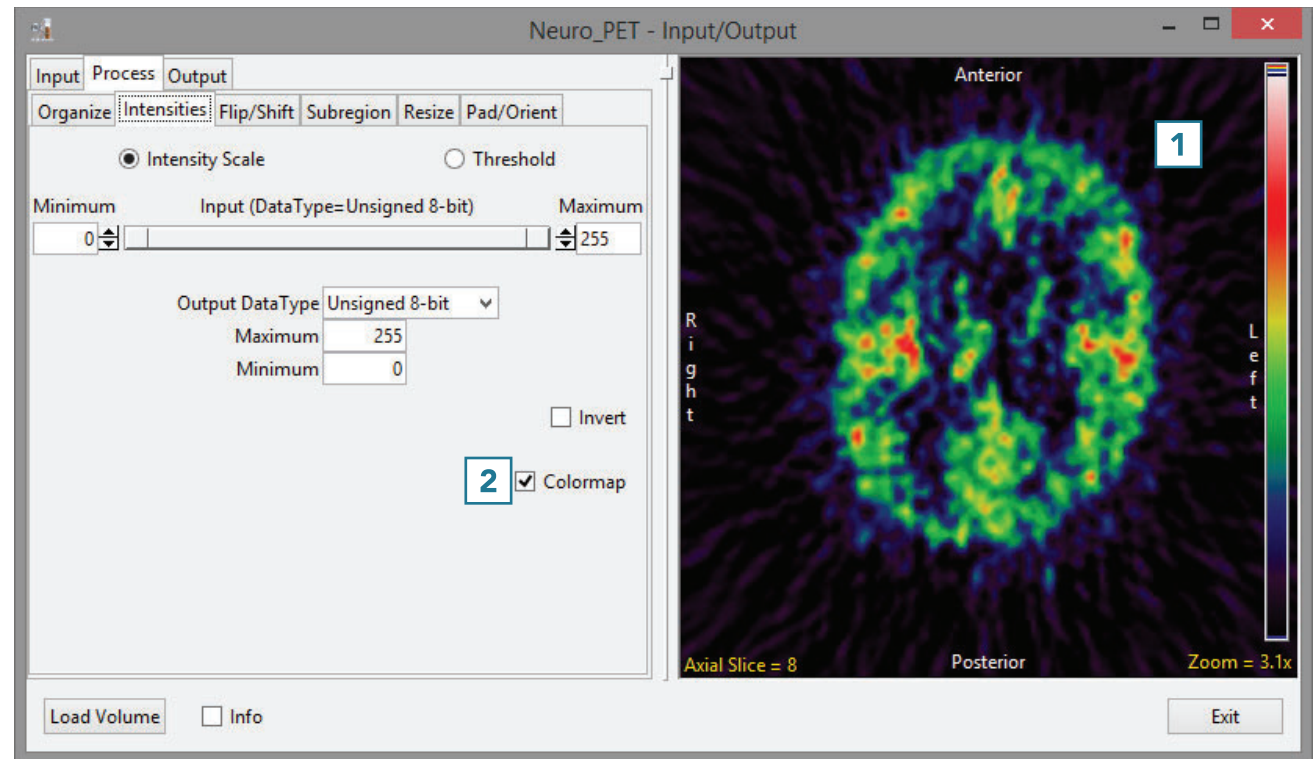
Intensities (continued)

Colormaps

When loading a data set that has an associated colormap [1], the Colormap checkbox will be selected [2].



Download the Neuro_PET data set to follow along <http://analyzedirect.com/data/>



Intensities (continued)

- To load the grayscale data without the associated .lkup colormap file, uncheck the Colormap checkbox [3]

Note that the image display will update to show the grayscale data [4].

- To load the data, click Load Volume [5].

