

# Configuring PACS Communications

## Input Type: PACS

The PACS Input Type option allows users to configure Query and Retrieval of DICOM data from PACS. To set up communications to allow Query and Retrieval of DICOM data from PACS, first create a database, see previous section: [Importing DICOM Data > Creating a Database](#), then:

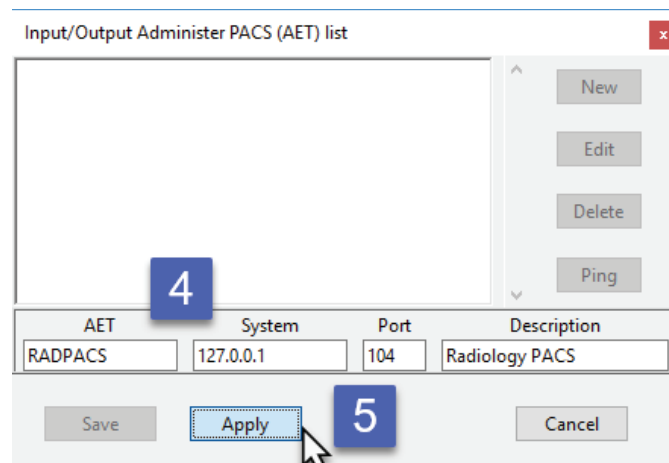
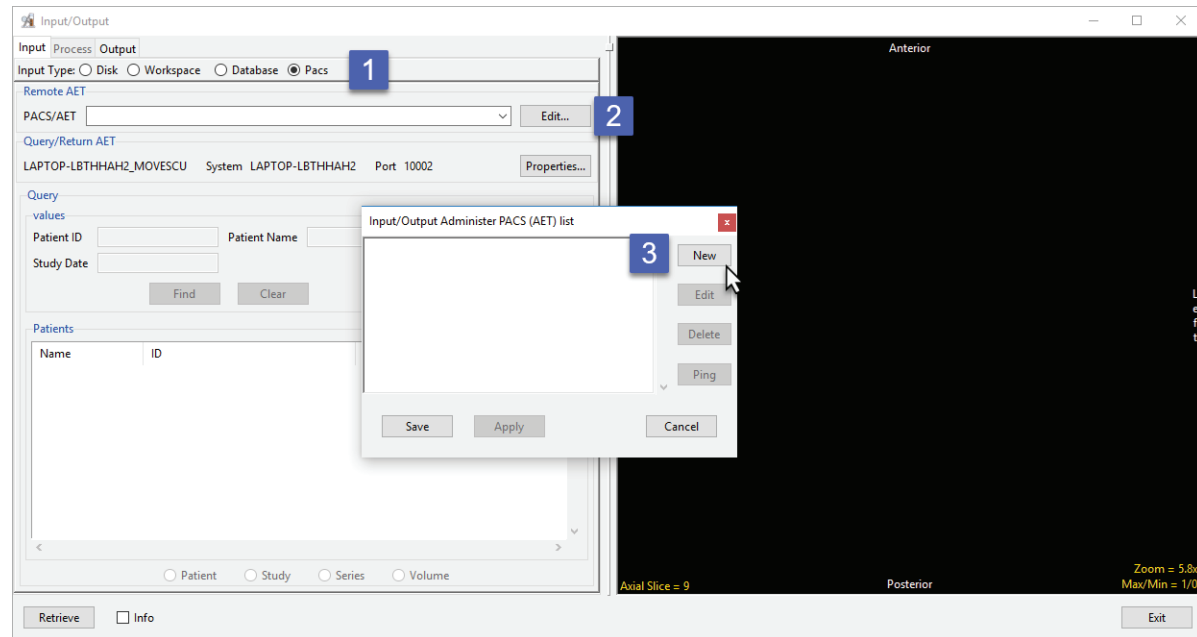
### Remote AET Configuration

Open Input/Output.

Set Input Type to PACS [1]. Under Remote AET, click Edit [2]. In the Input/Output Administer PACS (AET) list window that opens, click New [3]

The window will update showing AET, System, Port, and Description fields. Enter the PACS information into these fields [4] and click Apply [5].

Note that you will need to contact your PACS administrator to obtain the relevant PACS information.



The window will update and the PACS information will be available in the main window. [6].

Click Save to close the window [7].

### Local Query/Retrieve AET Configuration

For Analyze 14.0 to successfully query and retrieve DICOM image data from PACS a local MOVESCU service needs to be configured.

Under Query/Return AET click the Properties button. [8]

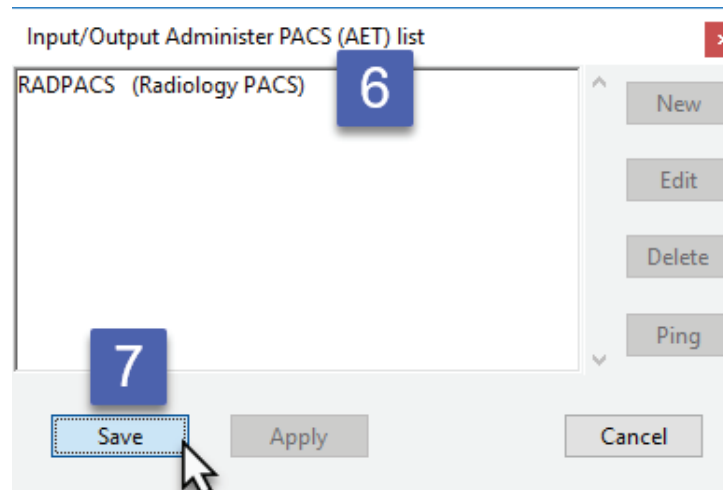
In the window returned enter the Q/R AET.

Note: The AET should not be over 16 alphanumeric characters.

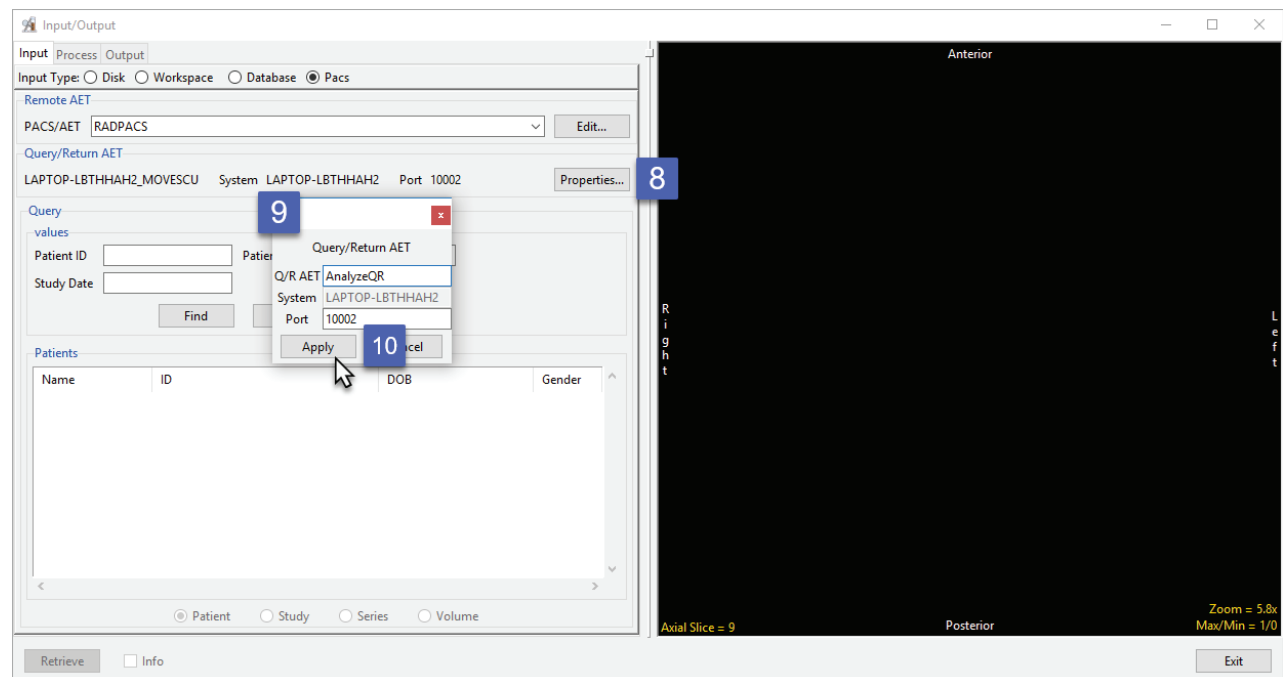
Enter the Port number Q/R will use and then click Apply. [10]

Make a note of the Q/R AET and Port number. Your PACS administrator will need this information along with the systems IP address to configure Q/R on PACS.

PACS is now configured on Analyze 14.0.



**Note:** There may be additional configuration required on the PACS side by your PACS admin. Also, your systems Firewall may need to be configured to allow Inbound and Outbound communication for the Remote AET port and local Query/Return AET port prior to successful Q/R of DICOM image data from PACS.



**Note:** There may be additional configuration required on the PACS side by your PACS admin. Also, your systems firewall may need to be configured to allow Inbound and Outbound communication for the Remote AET port and local Query/Return AET port prior to successful Q/R of DICOM image data from PACS.

### Querying and Retrieving DICOM data from PACS

To Query PACS, choose which PACS to query using the drop-down menu under Remote AET [1]. Under Query enter the Patient ID, Patient Name or Study Date [2] and click Find [3]. The relevant patient data will displayed under Patients. [4].

Select the patient and click Retrieve/Load Volume(s) [5] to load the selected data into the current workspace.

