

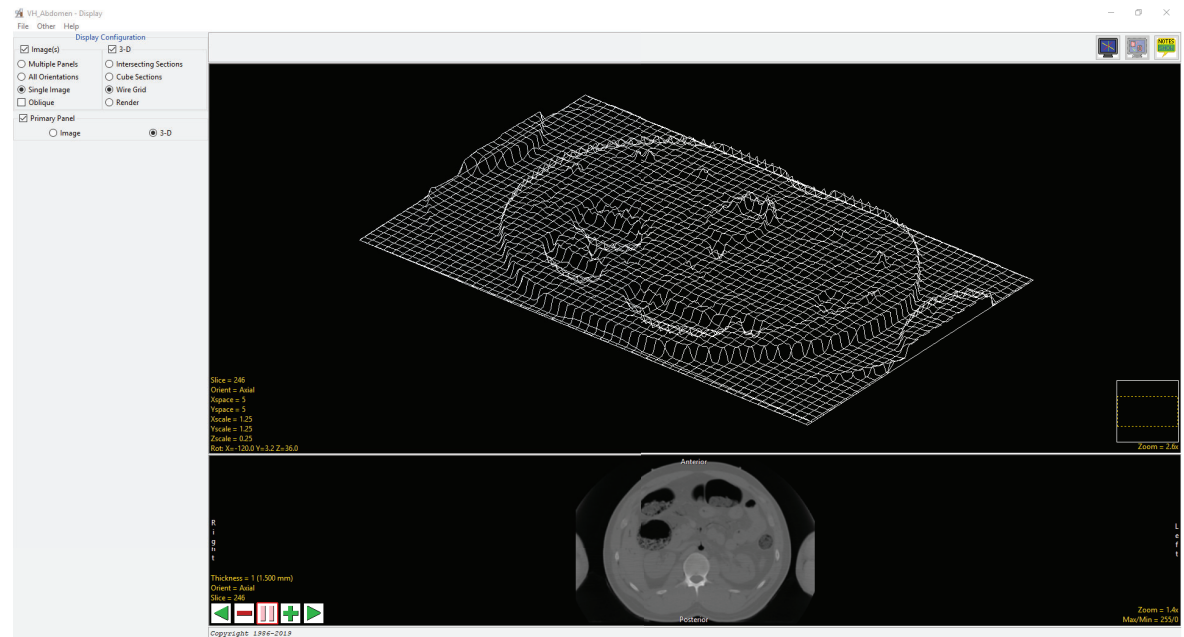
Wire Grid

Wire Grid generates and displays a plot of the current slice intensities. Options available are:

Slice: Allows navigation through slices data.

Orient: Allows change of display orientation.

Spacing: Allows different sampling of points in the slice for the wire grid display. Small values result in fine sampling and large values result in coarse sampling. Values in the range of 5 - 10 are a recommended starting point.



Xspace: Adjusts the row increment determining which rows of the slice are sampled for the display of the wire grid.

Yspace: Adjusts the column increment determining which rows of the column are sampled for the display of the wire grid.

Scale: Scale allows for the specification of the display size of the wire grid. The default values are 1. for X and Y and 0.1 for Z.

Xscale: Specifies the x scale used to determine the width of the wire grid.

Yscale: Specifies the y scale used to determine the width of the wire grid.

Zscale: Specifies the z scale used to determine the width of the wire grid.

Rot: The Rotation tool allows users to rotate the display of the wire grid.

Right mouse menu options: *Copy to clipboard:* Saves the current wire grid image to memory. This can be pasted (Ctrl + v) into the Analyze 14.0 workspace, to be saved out of the software, or pasted into any other application. *Save Wire Grid:* When selected saves a recording of the Wire Grid display to the current Analyze 14.0 workspace.