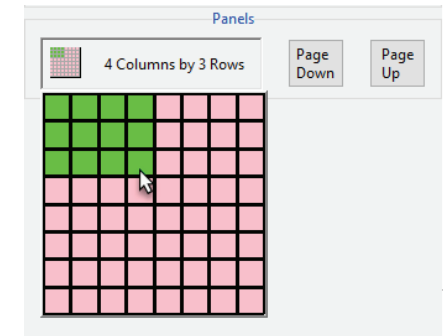




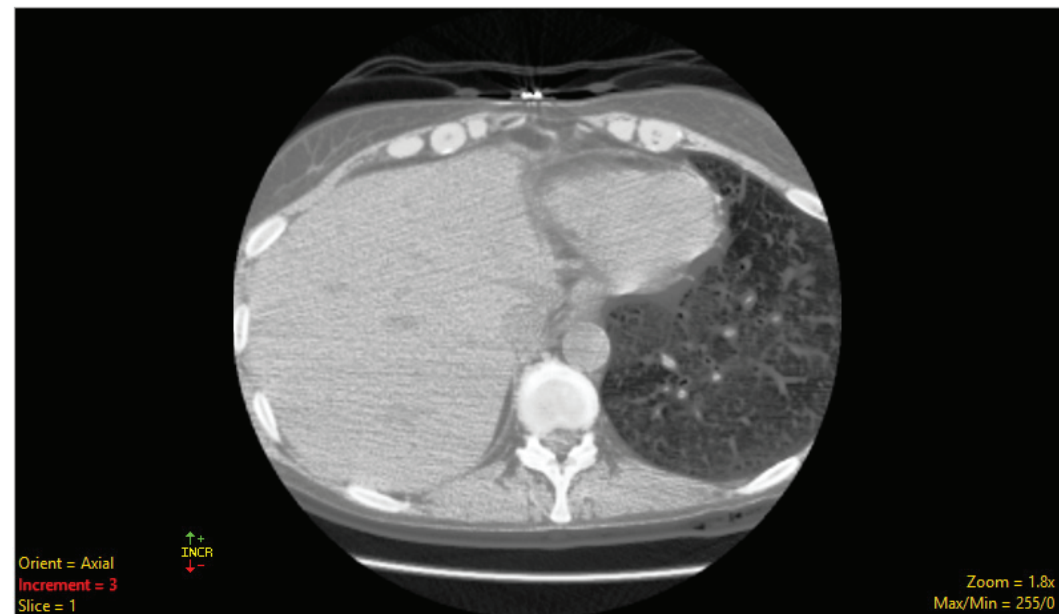
## Multiple Panels

When Display is first opened, the Image(s) checkbox is selected by default and the data set will be shown as a panel of sections from a single orthogonal orientation. The number of panels shown can be controlled using the Columns/Rows button and using the Page Down and Page Up buttons to change the number of slices shown. In the lower left-hand corner of the first image there are additional display controls tools. These are Orient, Increment, and Slice.



**Orient:** The Orient tool allows users to switch to switch between any of the three orthogonal orientations; Axial, Coronal, or Sagittal. Left click on the Orient tool to cycle through the orthogonal displays or right-click and choose the desired display option from the menu.

**Increment:** The Increment tool allows users to specify the interval used to determine the next image to be displayed. Click the yellow Increment text, the cursor will update to display an up/down INCR cursor. Hold down the left mouse button and slide the cursor upward to increase the increment value and downward to decrease the increment value.



**Slice:** Users can navigate through image slices using the slice tool. Click the yellow Slice text in the lower left-hand corner of the image pane. An up/down slice cursor will appear. Hold down the left mouse button, and slide the cursor upward to move to a higher slice number and downward to move to a lower slice