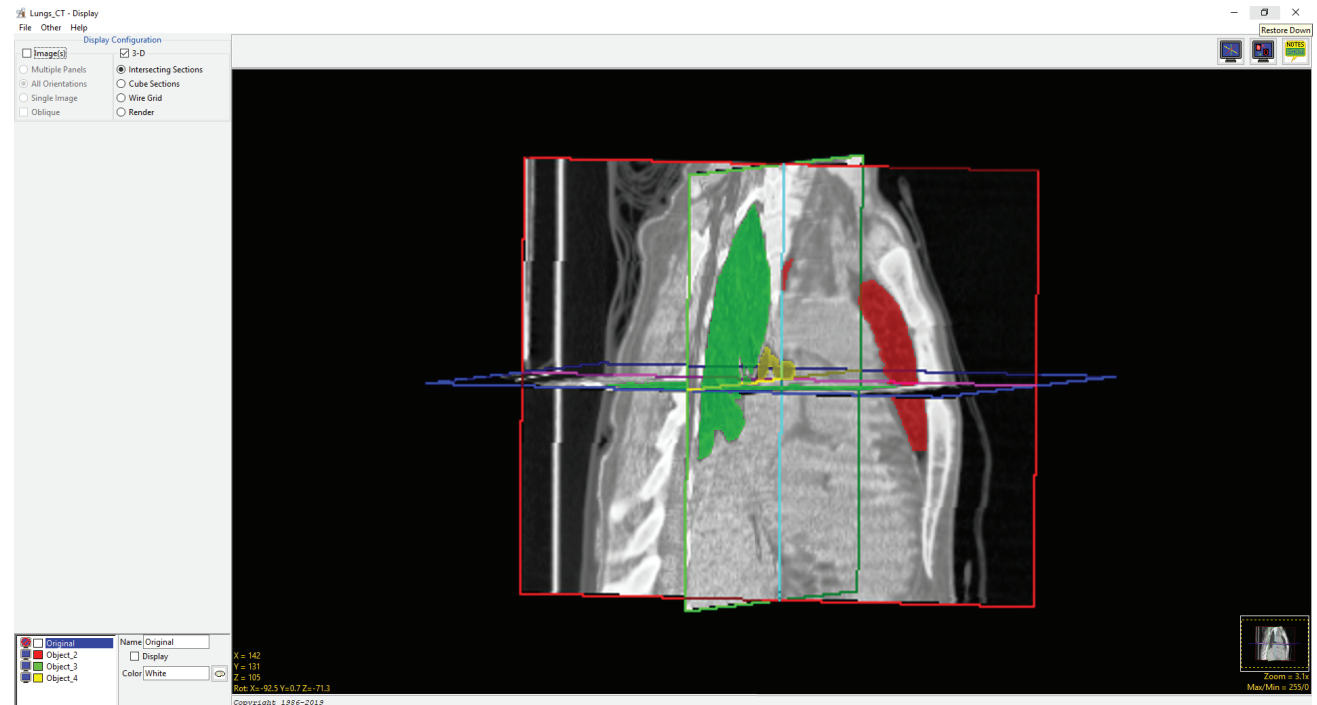


Intersecting Sections

The Intersecting Sections option displays a 3D data set via orthogonal section displays. Intersecting Sections shows three slices that can be controlled using the X/Y/Z values in the image display or interactively selected by choosing the planes in the intersecting sections display.

In the lower left-hand corner of the Intersecting Sections display window are the Intersecting Sections navigation controls.



X: Controls the Sagittal (XZ) slice viewed in the display. Left click the X control option and the cursor will update. Hold down the left mouse button and slide the cursor up to increase and down to decrease the X value. Users can also right-click and select First, Middle, or Last.

Y: Controls the Coronal (YZ) slice viewed in the display. Left click the Y control option and the cursor will update. Hold down the left mouse button and slide the cursor up to increase and down to decrease the Y value. Users can also right-click and select First, Middle, or Last.

Z: Controls the Axial (XY) slice viewed in the display. Left click the Z control option and the cursor will update. Hold down the left mouse button and slide the cursor up to increase and down to decrease the Z value. Users can also right-click and select First, Middle, or Last.

X/Y/Z Right-click options: The three slice display controls also provide the following configuration options by right-clicking:

- **Show (X, Y, or Z):** Allows users to enable and disable the current slice orientation display.
- **Color Edges:** Allows users to enable and disable the color edges around the slice displays.
- **Show Hidden Edges:** Only available when Color Edges is enabled. Allows users to enable and disable hidden edges of the slice displays.

Rot: The Rotation tool, reports the current XYZ rotation angle coordinates. When selected, enables the rotate cursor. Right-click on the tool to choose from rotation default options; Front, Back, Left, Right, Top, Bottom and Angled.

Right menu options:

- **Copy to clipboard:** Saves the current Intersecting Section image to memory. This can be pasted (Ctrl + v) into the Analyze 14.0 workspace, to be saved out of the software, or pasted into any other application.
- **Save Intersecting Sections:** When selected saves a recording of the Intersecting Section display to the current Analyze 14.0 workspace.

