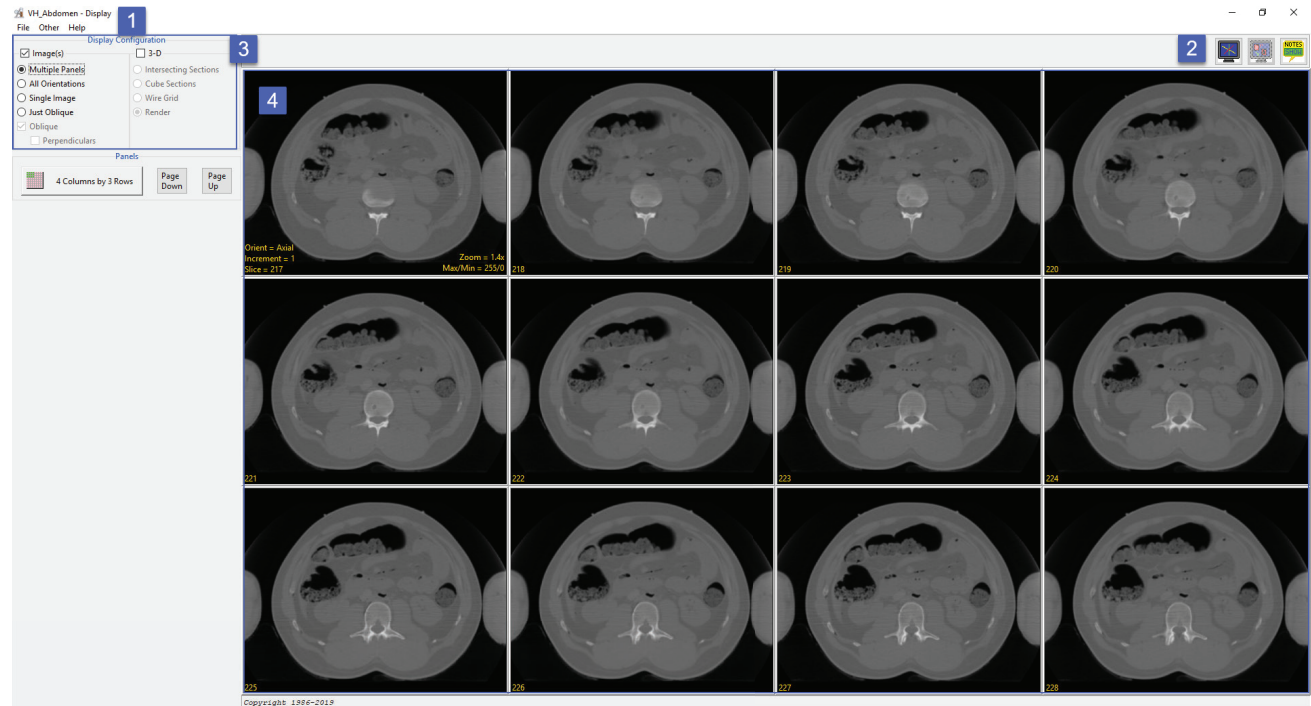




Display Module Interface

The Display Module interface is divided into the following areas:
[1] Menu, [2] Tools, [3] Display Configurations, and [4] Display Area.

Each of these Display Module Interface areas are now described:





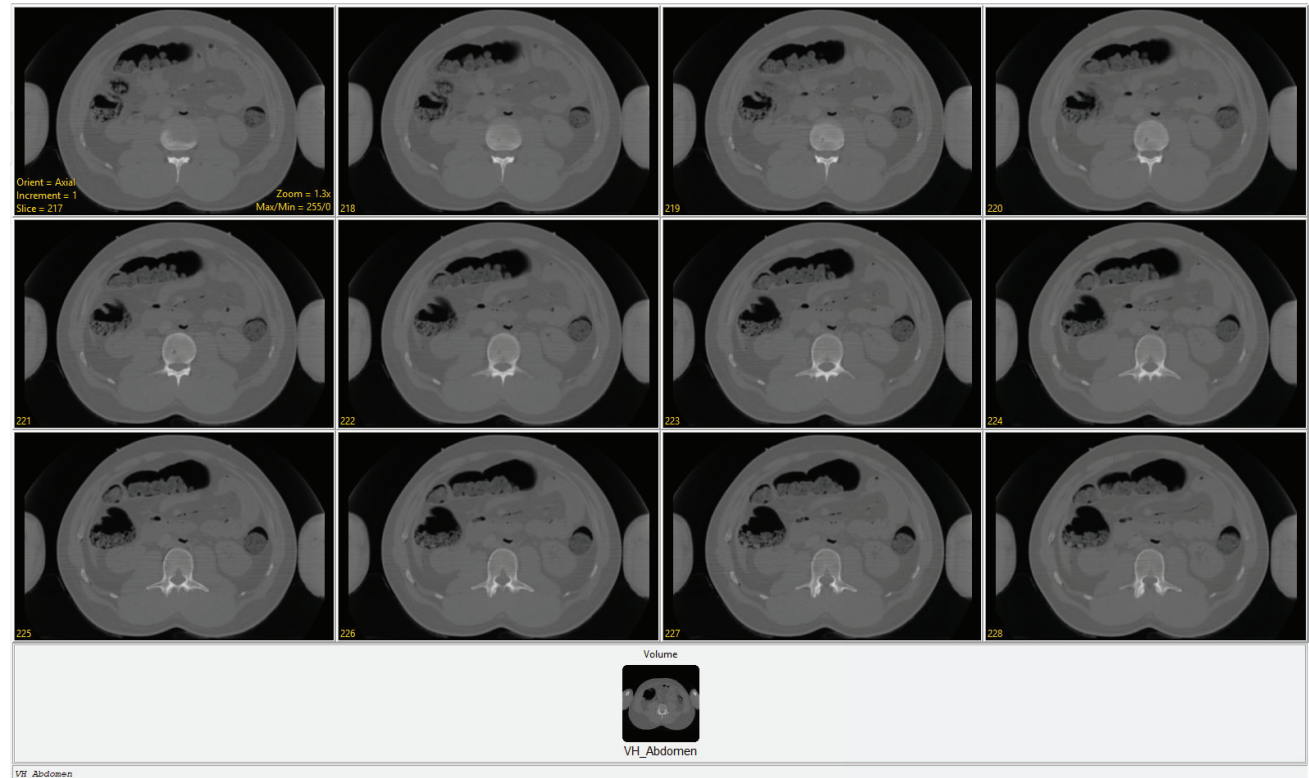
Menu

The Menu provides access to the File, Options, and Help menus.

File

The File menu allows users to load and save object maps for the loaded data set. The File options include:

Input Output Ports: Displays a Volume area at the bottom of the Display module window. This area facilitates the dragging and dropping of image data into the module.





Load Object Map: When selected opens a Load Object Map window allowing users to navigate to, select and load an object map file. The following options are available:

- **Current Directory:** Takes user to the current directory, the current directory is set by right-clicking in the main Analyze 14.0 window and then choosing Current Directory from the menu. See section 1. Analyze Basics for additional information.
- **Workspace Directory:** Takes user to the current Workspace directory.
- **Home Directory:** Takes user to the user's Home directory.
- **Cancel Load:** Cancels the load of the object map.

Load Object Map - Display



Where would you like to start looking for the Object Map to load?



Current Directory - C:\Data\Tutorial Data

Workspace Directory - C:\temp\AVW\mphil\Workspace 1

Home Directory - C:\Users\mphil

Current
Directory

Workspace
Directory

Home
Directory

Cancel
Load

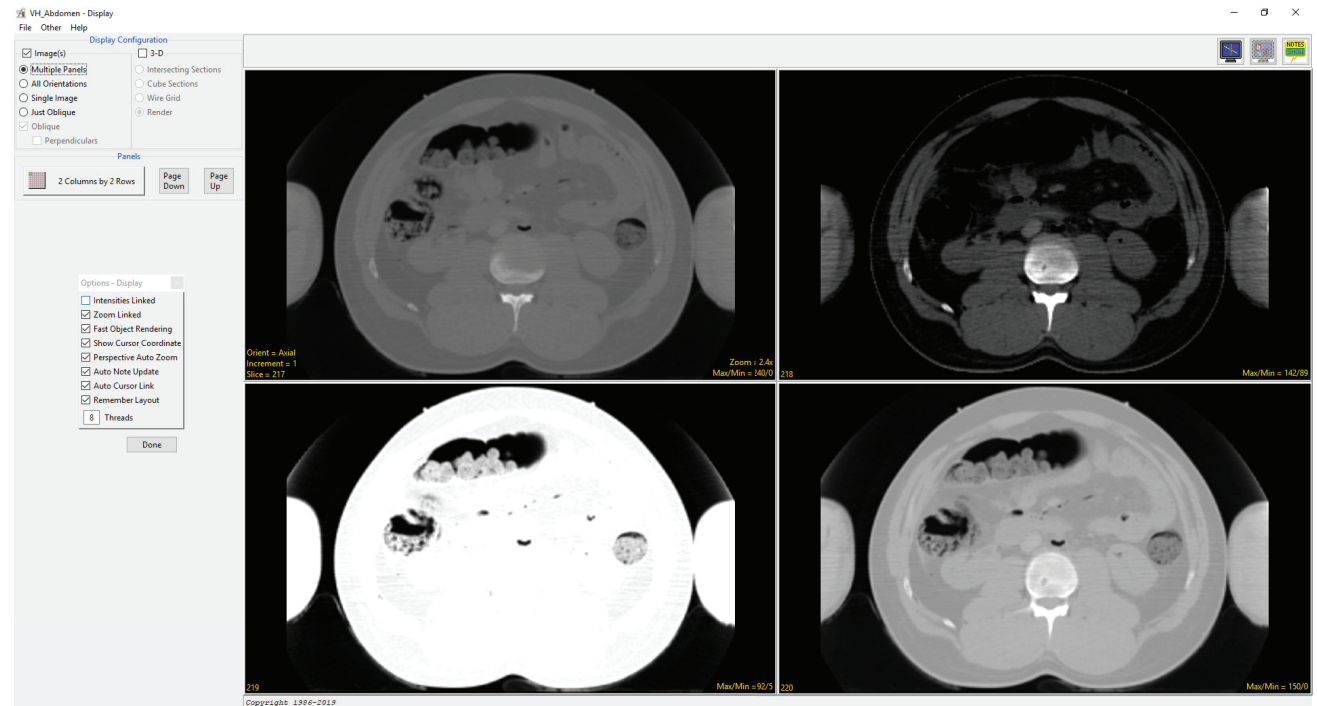


Save Object Map: When selected opens a Save Object Map window allowing users to navigate to name the object map and select a location to save the object map file.

Save Object Map As: Allows users to save a copy of the current object map without overwriting the original object map file.

Unload Object Map: Unloads the loaded object map

Exit: Closes the module



Options

When selected opens the Options menu providing access to Module configuration options, including:

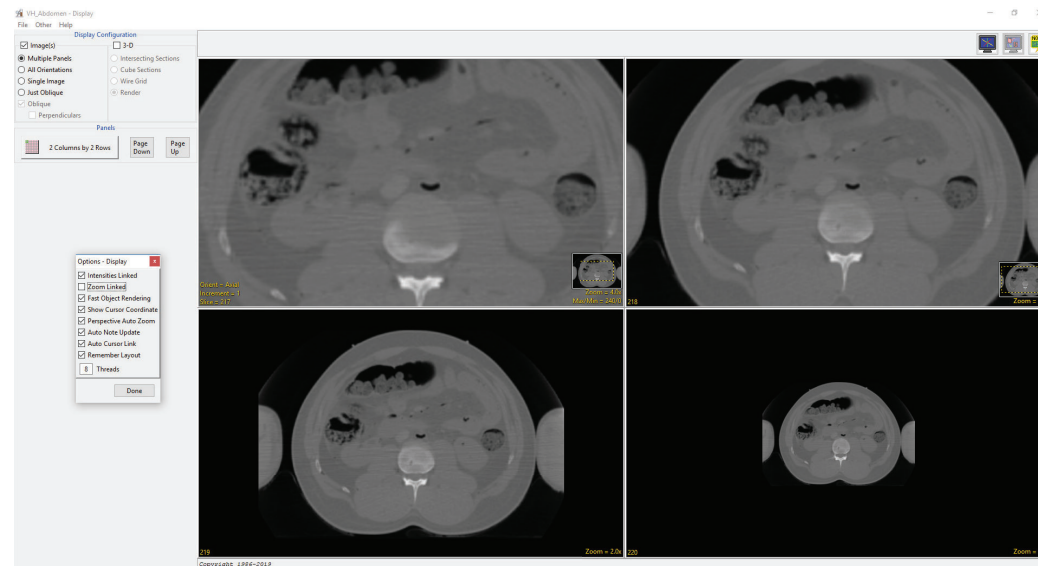
Intensities Linked: Allows users to enable or disable linked intensity adjustment. When linked any adjustment an images intensity display will be applied to all grayscale slices displayed. When disabled image intensities can be adjusted individually.



Zoom Linked: Allows users to enable or disable linked zooming. When linked any zoom in/out on an image is applied to all images. When disabled images can be displayed at different zoom levels.

Fast Object Rendering: Enables/Disabled Fast Object Rendering

Show Cursor Coordinates: Allows users to Enable/Disable the display of the linked cursor coordinates and voxel grayscale value displayed in the lower left-hand corner of the display window.

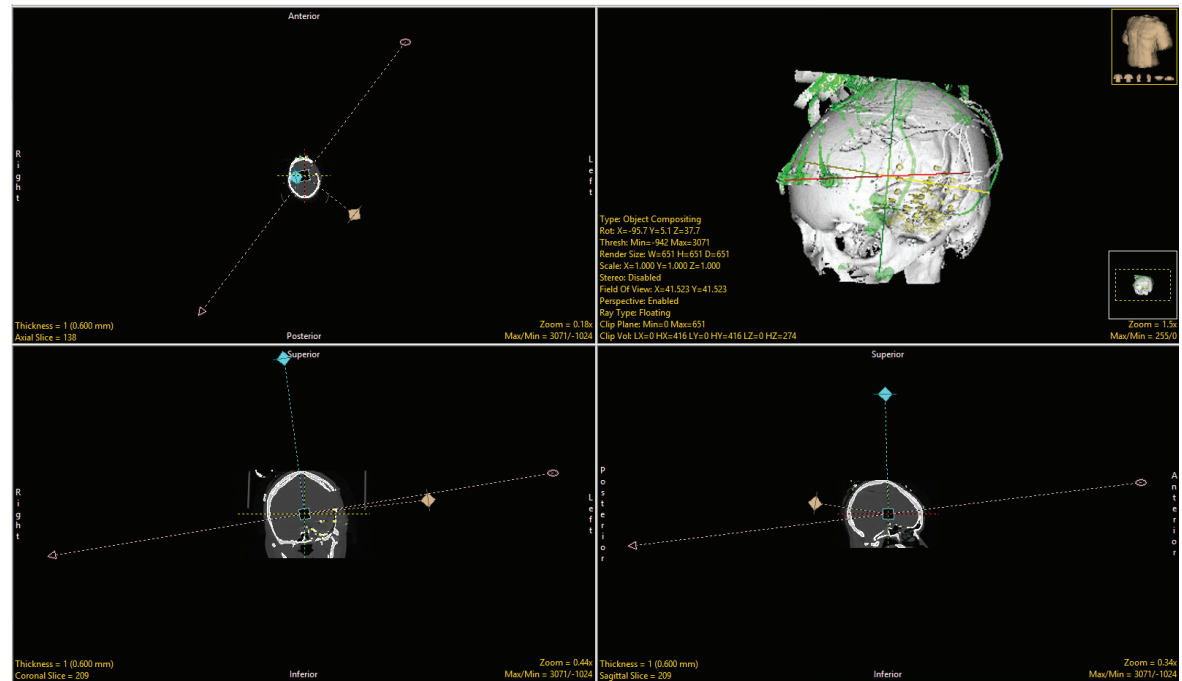


**Perspective Auto Zoom:** The

Perspective Auto Zoom function is used with the Perspective tool. When this option is enabled the orthogonal view will automatically zoom out so the user can see all camera control points.

Auto Note Update: Allows the Auto Note Update option to be enabled or disabled.

Auto Cursor Link: Allows the Auto Cursor Link option to be enabled or disabled.



Remember Layout: When enabled the module will remember changes made to the layout and will open with this layout in the future. When disabled the module will open with the default layout.

Threads: Allows users to specify the number of threads used in a multi-threaded rendering process. By default, the number of threads is set to the number of processors on the system.

Help

The Help menu provides users with quick access to help resources including:

About: View version, system and environment information.

Users Guide: Opens the Analyze 14.0 User's Guide.

Get Help: Opens the AnalyzeDirect Support Page.



Tools

The Tools options provide access to the Toggle Cursor Link, Toggle Region Display and the Set Note State tools. For further information on these tools please refer to section 2. Image Display, Controls and Customization.

Display Area

The Display Area provides access to various display windows and tools, a description of these tools can be found in section 2. Image Display, Controls and Customization. However, the Display module offers additional display functionality not found in other modules. These tools are described in the following Display Configurations sections.

Display Configurations

The Display Configuration area allows users to review data in 2D or 3D in the Display Area. The default setting when Display is first opened is for the Image(s) check box to be checked which enables the data to be displayed in an array of 2D images. When the 3D checkbox is checked, a 3D display window is added to the current display. A myriad of different display options are offered through Display Configurations which are now described: