

Perspective Tool

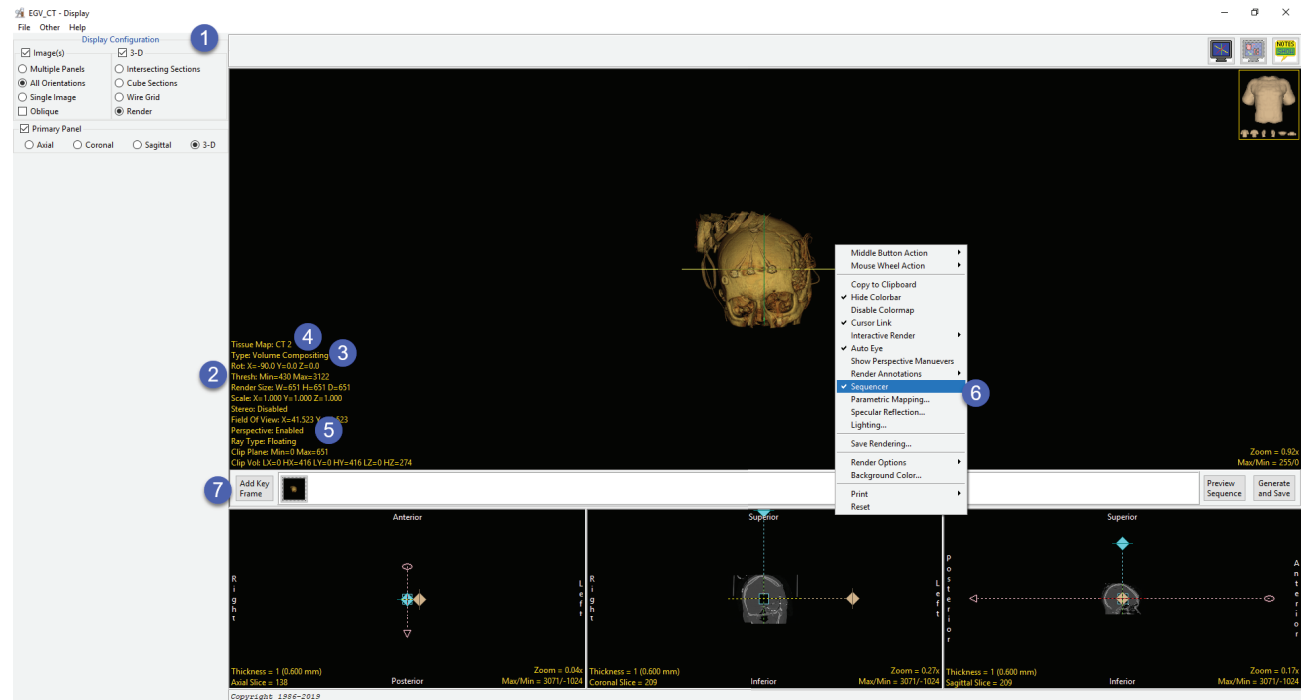
The Perspective Tool provides users with another option to create powerful and interesting movies from their rendered image data.

Download the EGV_CT.avw data set to follow along, from <https://analyzedirect.com/data>.

Use the Input/Output module to load the EGV_CT.avw.

Select the EGV_CT data set and then open Display.

In Display check both the Image(s) and 3-D Display Configuration options. Make sure to choose All Orientations and Render.



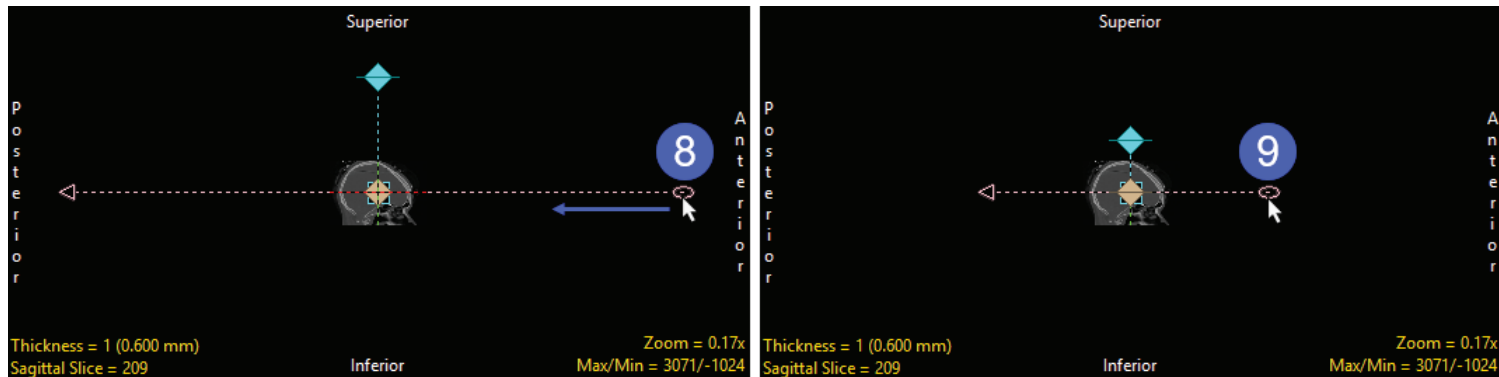
From the Render options in the lower left-hand corner double click on the yellow Thresh text and change the Min value to 430. (2) Note if the Render options are not available right click in the Render window and choose Render Options, enable all the options.

Right click on Type and select Volume Compositing. (3) Then right click on Tissue Map and choose System Tissue Maps > CT 2 (4).

Enable the Perspective tool by clicking on the Perspective option changing it from disabled to enabled. (5) Note that the three orthogonal views will update to display interactive camera and look at points. Right click in the Render window and choose Sequencer (6) to enable to sequencer below the Render window. Click Add Key Frame to add a starting key frame to the sequencer (7).

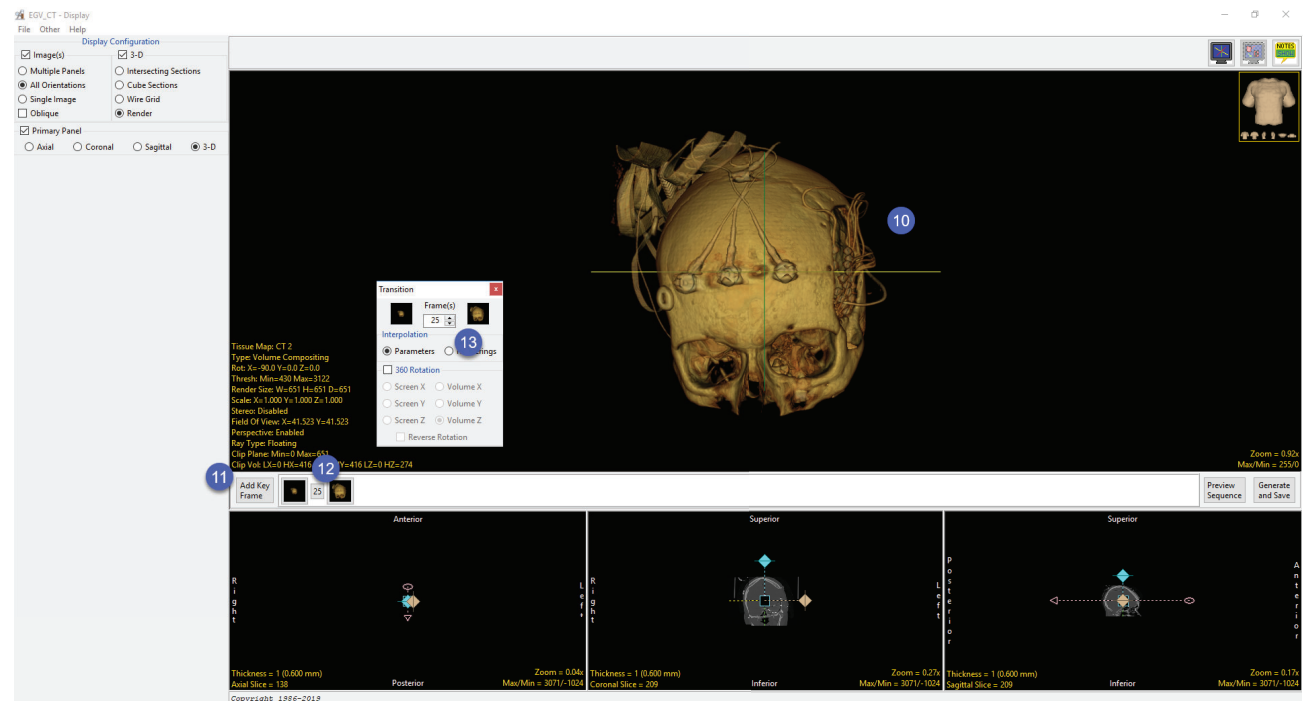
Perspective Tool (continued)

In the Sagittal orientation click on the perspective camera point (round icon) (8) and move it to the left (9).



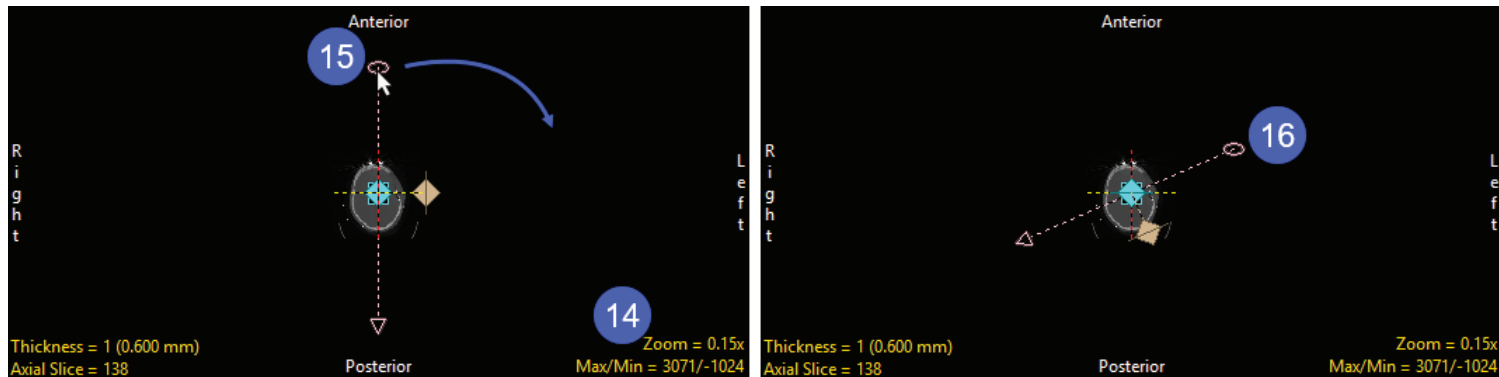
Note the update to the rendering (10).

Click the Add Key Frame button (11) to add the new key frame to the sequence. Click the Transition button (12) and set the Frame(s) to 25 (13).



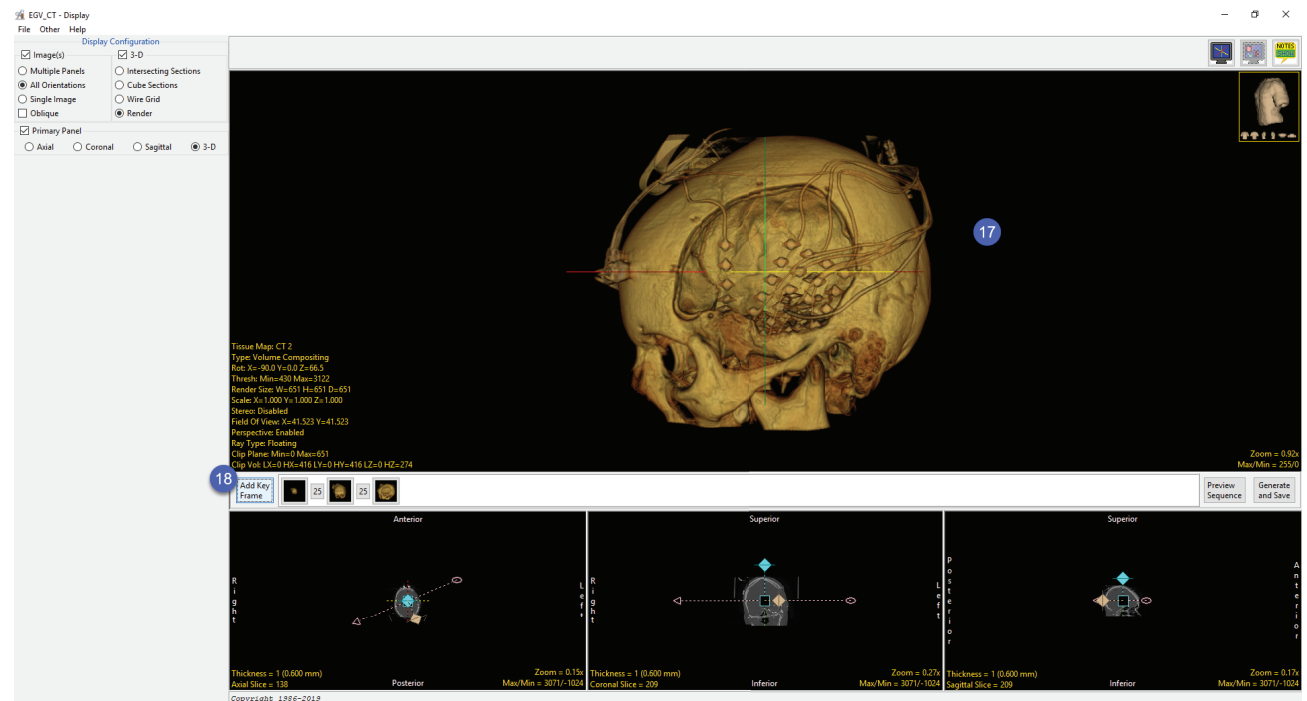
Perspective Tool (continued)

In the Axial orientation, zoom in to view the display clearer. (14). Select the perspective Camera point (15) and move it clockwise (16).



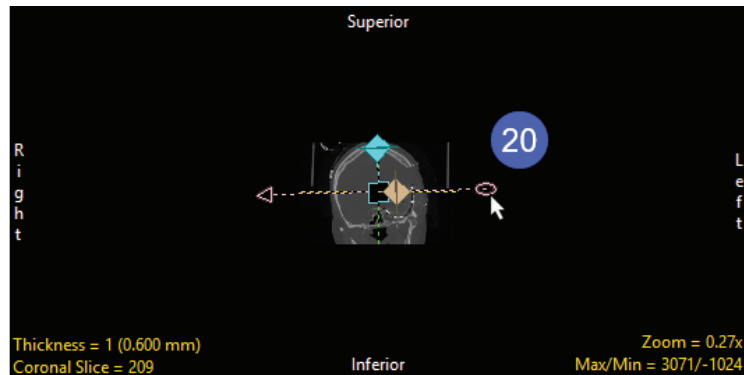
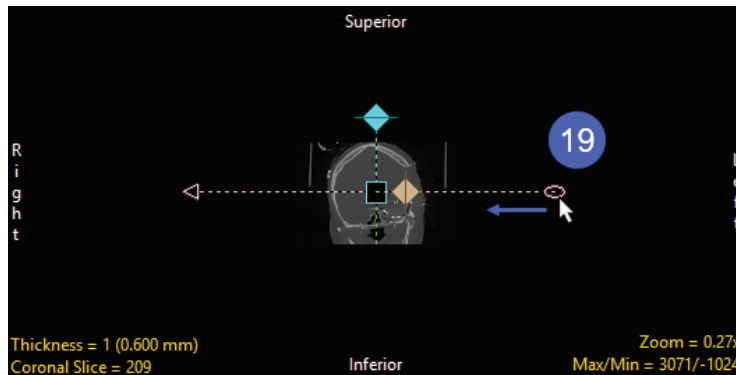
Note the update to the rendering (17).

Click the Add Key Frame button (18) to add the new key frame to the sequence.



Perspective Tool (continued)

In the Coronal orientation click on the perspective camera point (19) and move it left, closer to the image data (20).



Note the update to the rendering (21). Click the Add Key Frame button (22) to add the new key frame to the sequence. Right click on the first frame and choose Copy (23). At the end of the sequence right click and choose Paste. (25) The movie will now start and end at the same point.

Preview the movie (26). If you wish to save the movie sequence to apply to another data set, right-click in the Sequencer and choose Save Sequence. (27). To save the movie to the workspace select Generate and Save (28).

