

Exercise 7 : Saving Data Out of Analyze

At some point it will become necessary for you to save your data out of Analyze. This exercise will demonstrate how to do this using the Save module.

1. Select a data set from the Analyze workspace. If there is no data loaded, load **MRI_Head.avw** from the **\$(BIR\images\TutorialData)** directory.
2. Open the **Save** module (**File > Save**).
3. Click **File** and navigate to the directory where you would like to save the data set and specify a name. Click **Save** to return to the main module window.
4. Use the **Format** drop-down menu to specify the format in which you wish to save the data set.

note Only formats enabled in the external libraries tool will be available. To switch on support for additional formats, please refer to Exercise 3: Switching on Support for Additional Formats.

5. Click **Save** to save the data set and close the Save module.

tip You can also save your data out of Analyze using the Save As module. The Save As module provides the same tools as the Load As module, allowing you to resize, change orientation, sub-region, and perform other manipulations on your data while saving it out of Analyze.

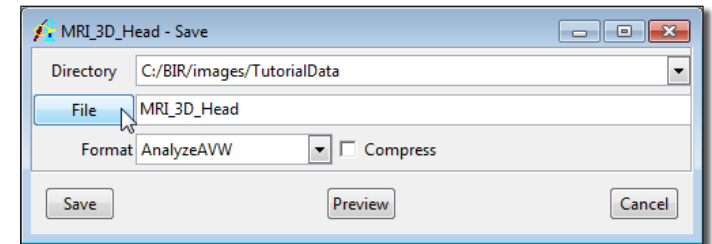


Figure 1