

Exercise 11 : Volume Compare

The Volume Compare module provides the ability to compare data sets images that have the same spatial resolution. This exercise will provide an overview of the module.

1. Load the **MRI_3D_Head.avw** and **MRI_3D_Brain.avw** data sets from the `$(BIR)\images\tutorialData` directory. Select both data sets, **MRI_3D_Head.avw** first and **MRI_3D_Brain.avw** second.
2. Open the **Volume Compare** module (**Display > Volume Compare**).
3. Open the **Blend** window, select **Yellow-Cyan**. Click on any of the images and drag your cursor to move through the image display. Alternatively, use the arrow keys and the page up, page down keys to move through the data.
4. From the **File** menu, select **Load First Object Map** and load the **MRI_3D_Head.obj**.
5. Next, load the **MRI_3D_Brain.obj** object map for the second volume (**File > Load Second Object Map**).
6. Use the crosshairs to navigate through the data (figure 2).
7. Double click in any pane to log points. To save the **Point Log**, click **Save** (figure 3).
8. To save the **Fused Volume**, select **File > Save Fused**.
9. Close the Volume Compare module before proceeding to the next exercise.

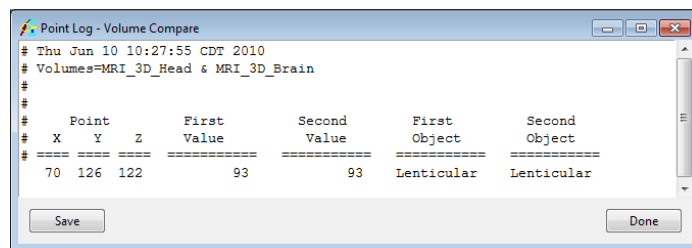


Figure 3

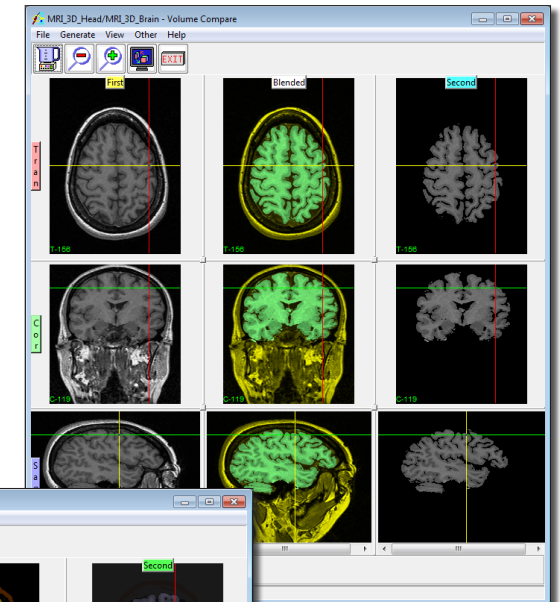


Figure 1

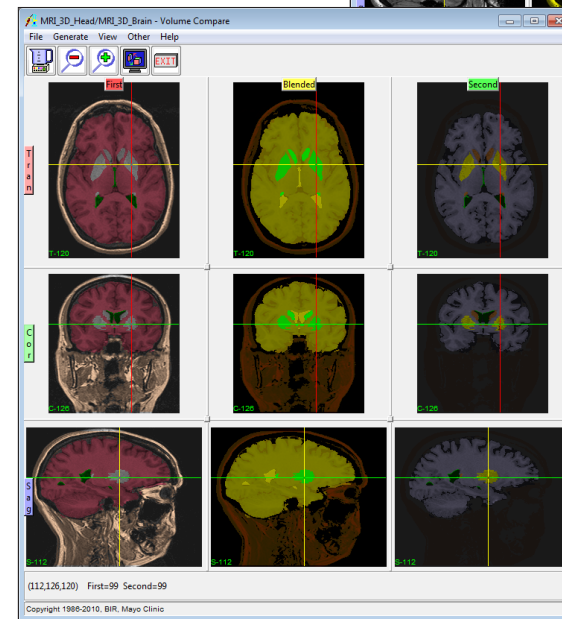


Figure 2