

Shift

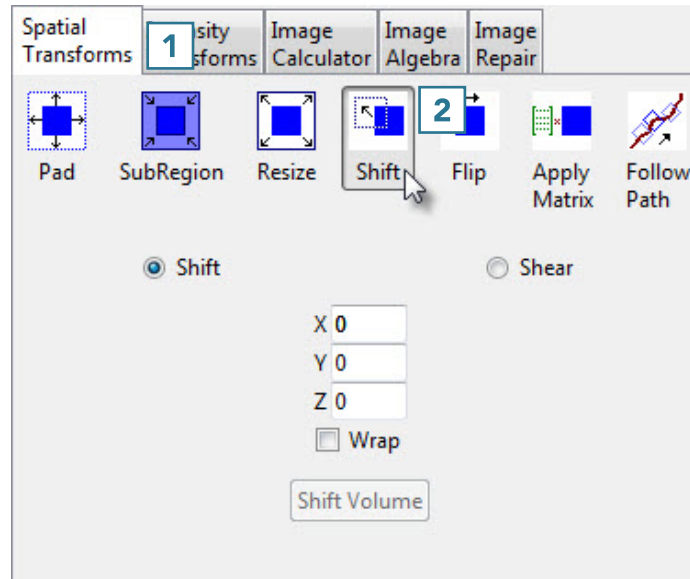
The Shift tool can be used to shift data horizontally or vertically. This may be necessary to correct wraparound artifacts.

1. Correcting Wraparound Using the Shift Tool

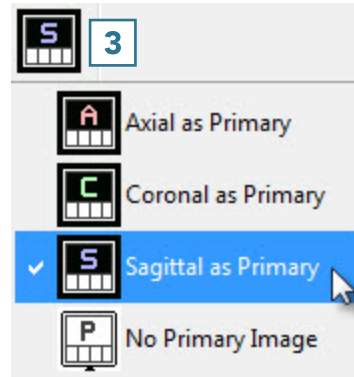
- Select the data set to shift and open Transform. Navigate to Spatial Transforms **1** and select the Shift tool. **2**



Download the MRI_Head data set to follow along <http://analyzedirect.com/data/>



- This data set has a wraparound artifact which is visible in the sagittal view.
- Set sagittal as the primary view by double-clicking on the sagittal image or using the primary view menu. **3**



- Use the linked cursor to determine the shift parameter value. **4**
- In this data set, when the cursor is lined up with an appropriate break point in the sagittal view, the corresponding coronal slice number is 25. **5**

Refer to [Table 6.2](#) to determine the correct sign and direction of the desired shift.

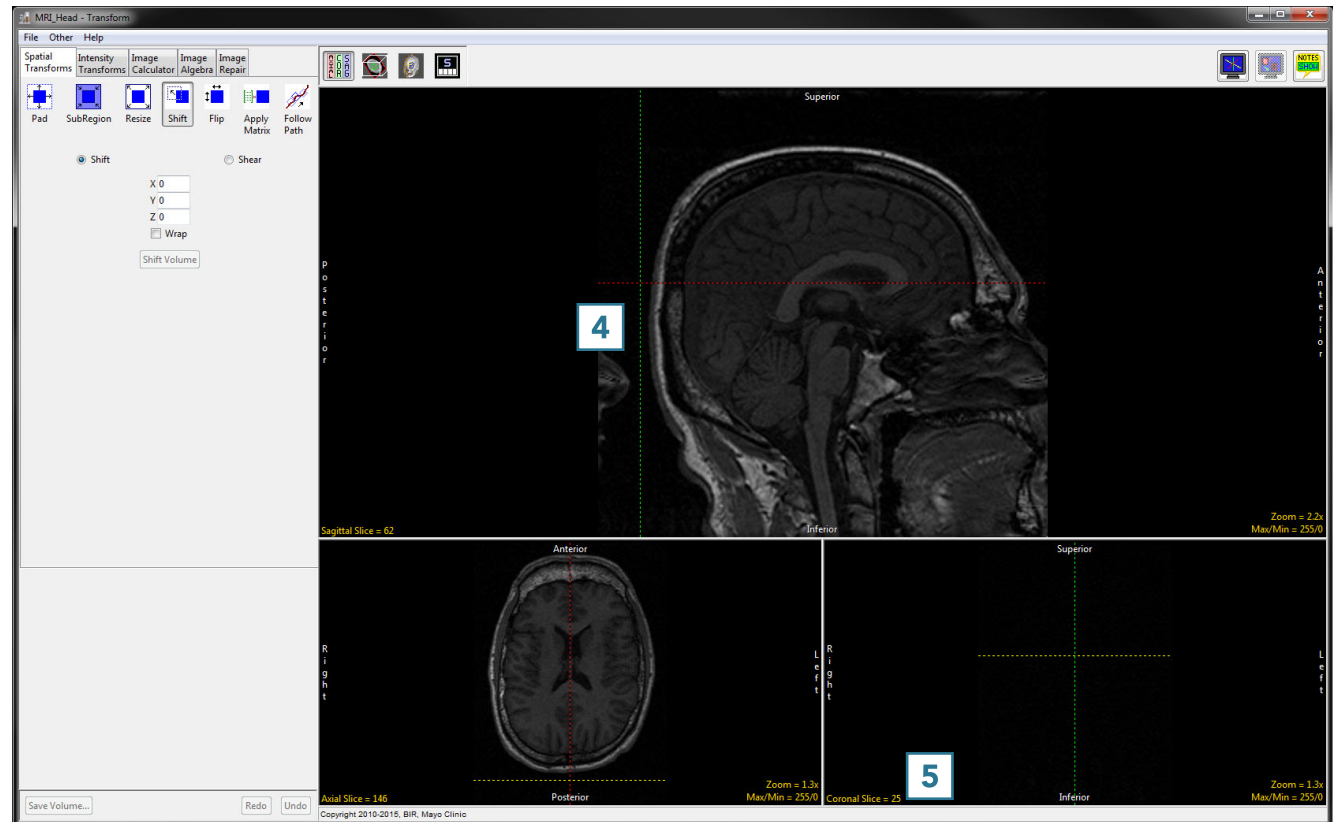
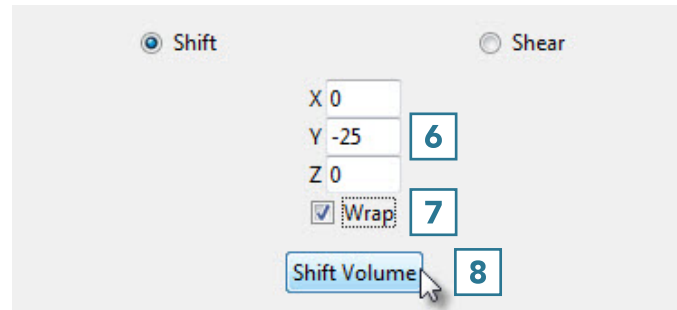


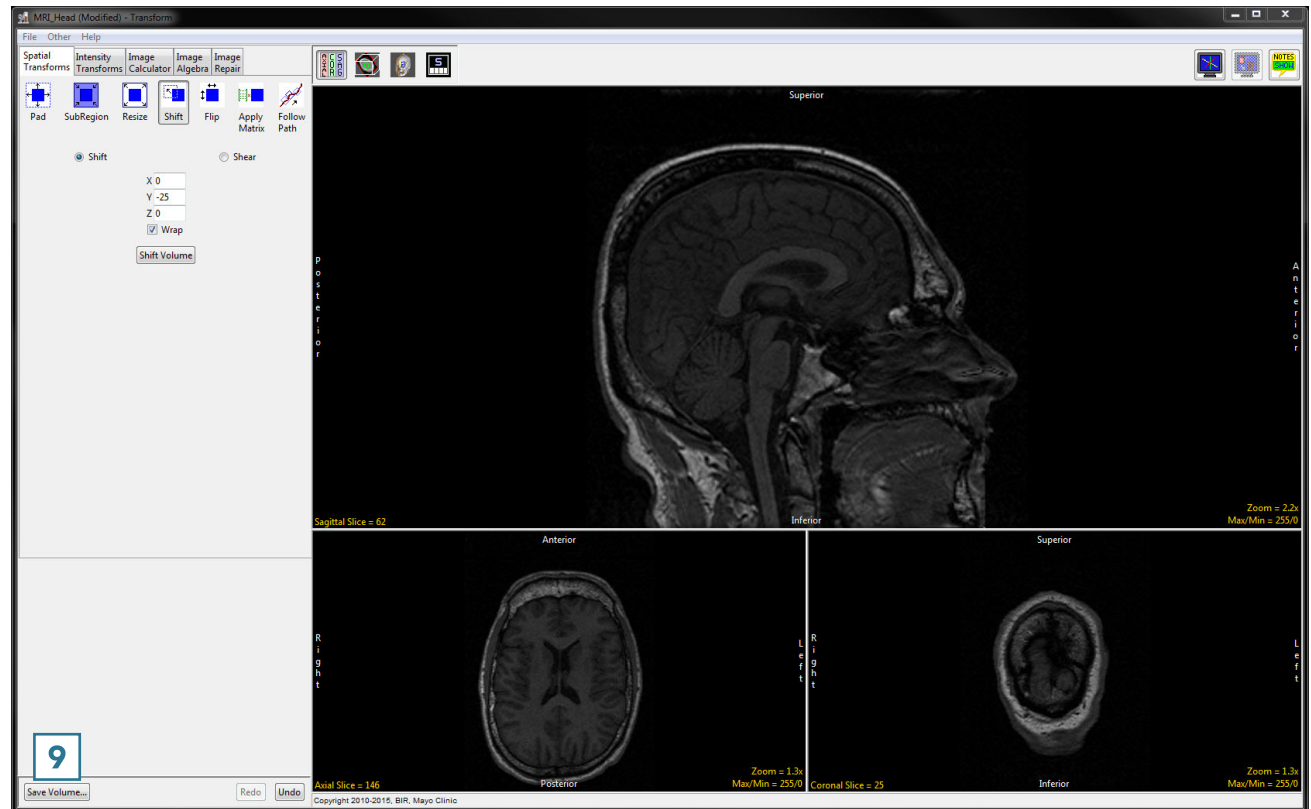
Table 6.2: Shift Parameters

Parameter	Axial		Coronal		Sagittal	
	+	-	+	-	+	-
X	right	left	right	left		
Y	up	down			right	left
Z			up	down	up	down

- Since we want to shift the sagittal image to the left, we will use a Y parameter of -25.
- Type this parameter value into the input box. **6**
- Select the Wrap checkbox. **7**
- Click Shift Volume to complete the shift. **8**



- The data set will shift to the left by 25 slices and wrap those slices back around to connect with the rest of the head.
- Click Save Volume to save the shifted data set. **9**



- In the Save Transformed window, choose to create a new workspace volume. **10**
- Rename **11** and click Save Volume. **12**
- Close Transform.

