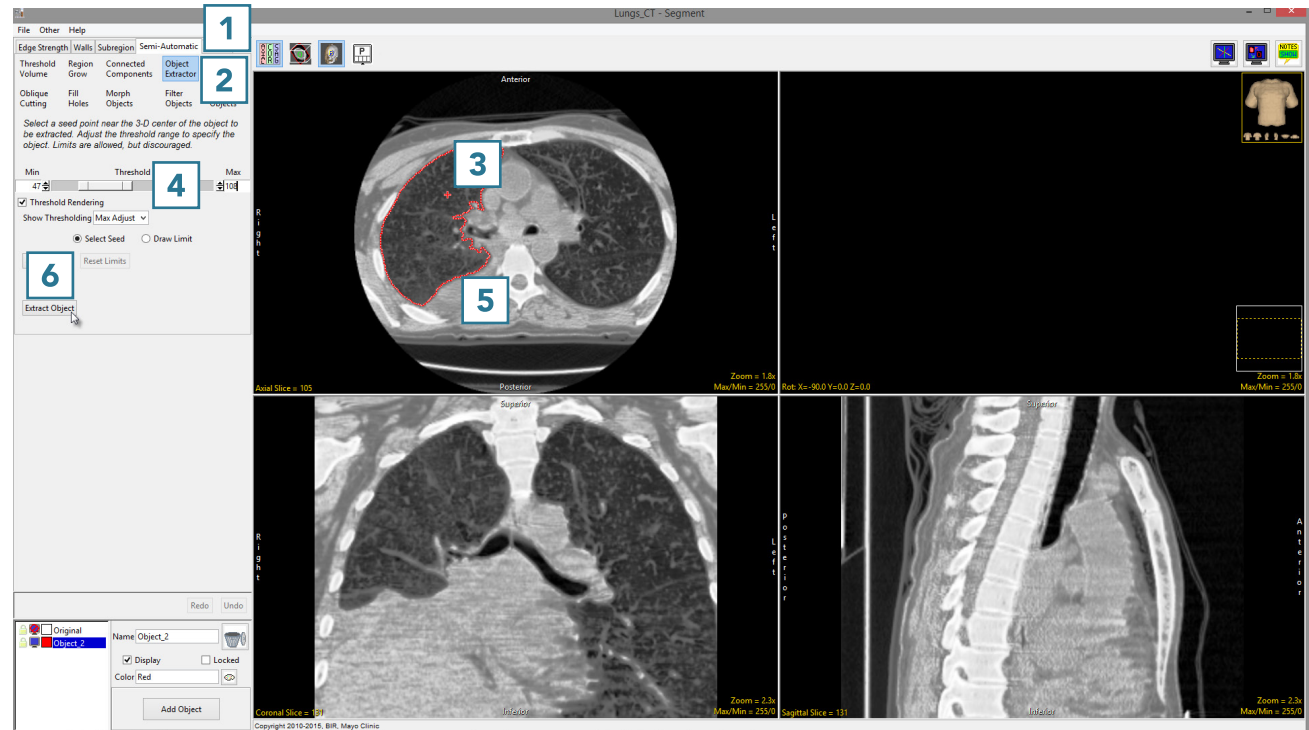


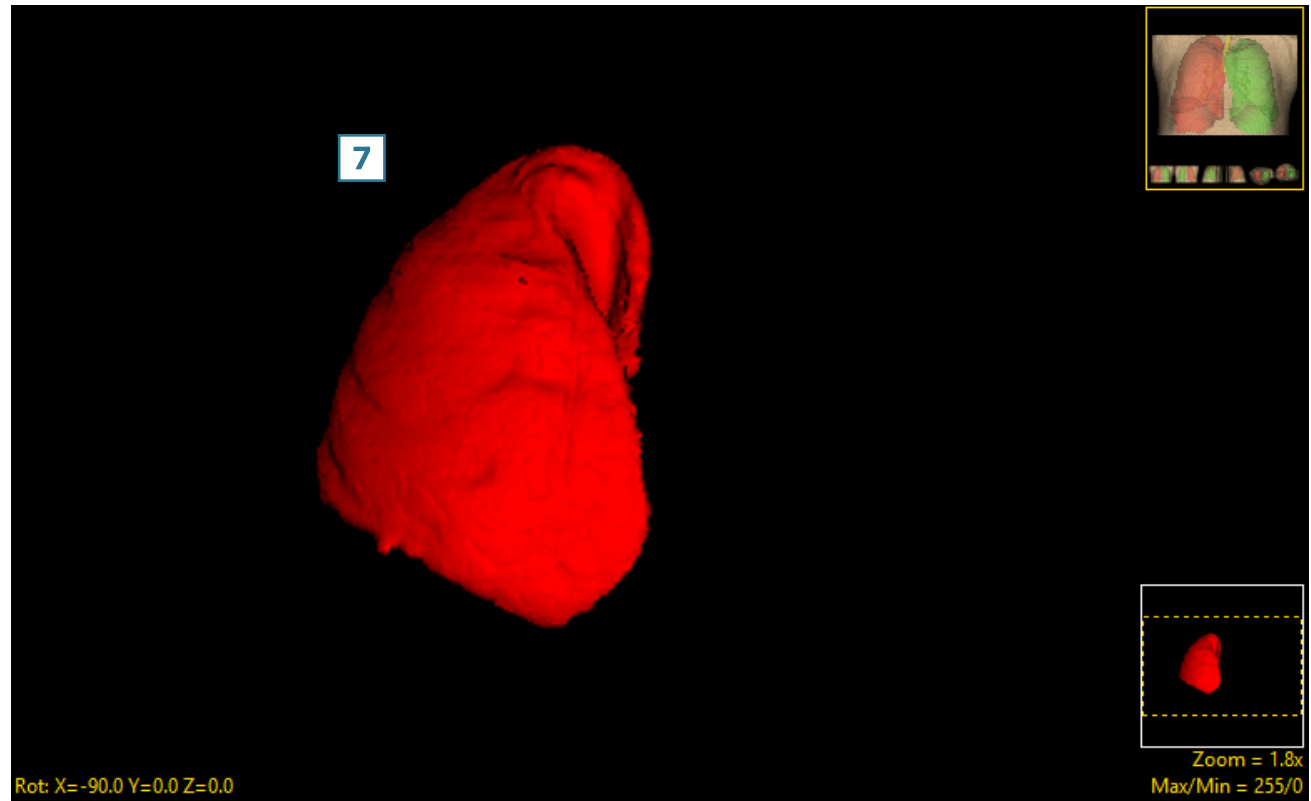
## 10. Segmentation of Multiple Objects Using Object Extractor

- Select a data set and open Segment.
- Select Semi-Automatic **1** and choose Object Extractor. **2**
- Click on the image data to set a seed point in the object you would like to isolate. **3**
- Adjust the minimum and maximum threshold values **4** until the auto trace defines the object. **5**
- Select Extract Object. **6**

 Download the CT\_Lungs data set to follow along <http://analyzedirect.com/data/>



- Once the segmentation process is complete, the object will be rendered. **7**



- Rename the object. **8** Add a new object **9** and rename. **10**
- Set a seed point in the next object **11** and select Extract Object. **12**
- Once the segmentation process is complete, the object will be rendered. **13**
- Save your work by selecting File > Save Object Map.

