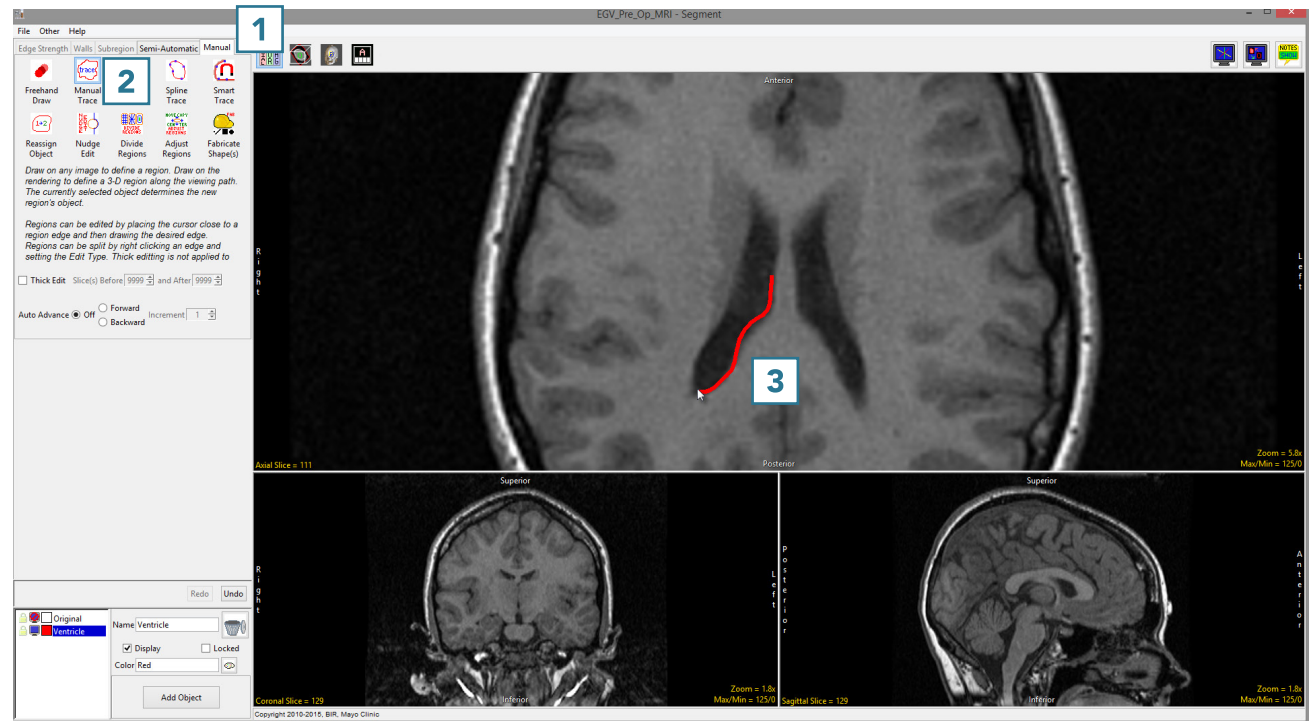


## Manual Trace

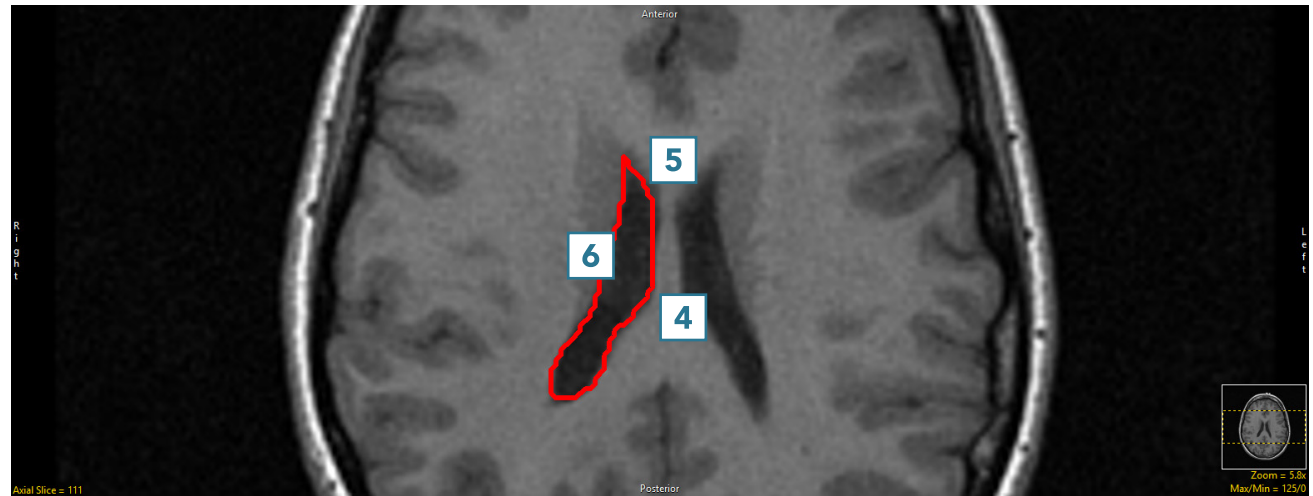
Like the Freehand Draw tool, the Manual Trace tool allows the user to draw regions of interest directly onto the image data. Manual tracing allows contours to be drawn around the edges of a region of interest.

## 21. Manual Contour Tracing and Editing

- Select a data set and open Segment.
- Select Manual **1** and choose Manual Trace. **2**
- Left-click on a slice to begin tracing and move the cursor around the region you want to define. **3**



- Release the left mouse button to complete the trace. **4**
- To edit the trace and add pixels that may be missing, **5** click on the trace **6** and draw in the missing region. **7**
- To edit the trace and remove additional pixels, **8** hover near the edge of the contour until the cursor changes to a + sign, then drag the cursor into the trace. **9**



- Adjust the trace to remove the undesired pixels. **10**

