

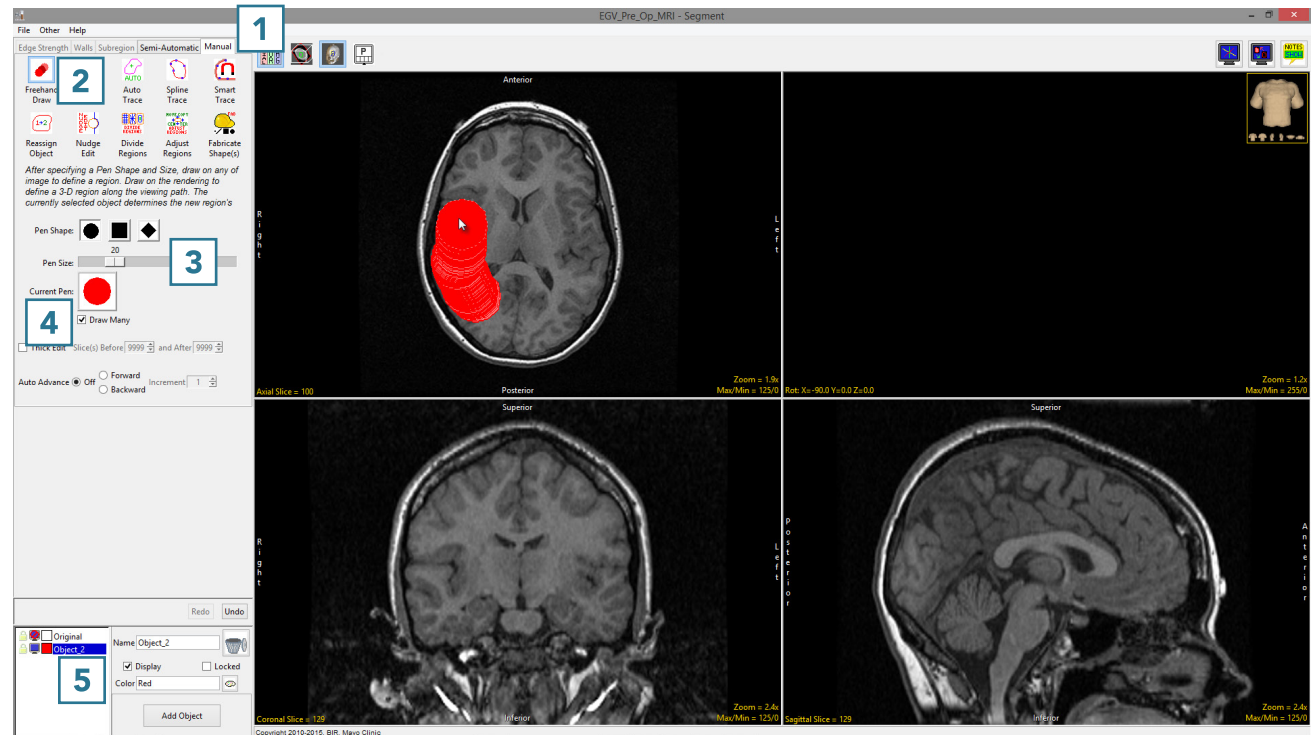
Freehand Draw

The Freehand Draw tool lets the user draw regions of interest directly onto the image data. Three different Pen Shape options (circle, square, diamond) and a customizable Pen Size (from 1 to 100 pixels) are available.

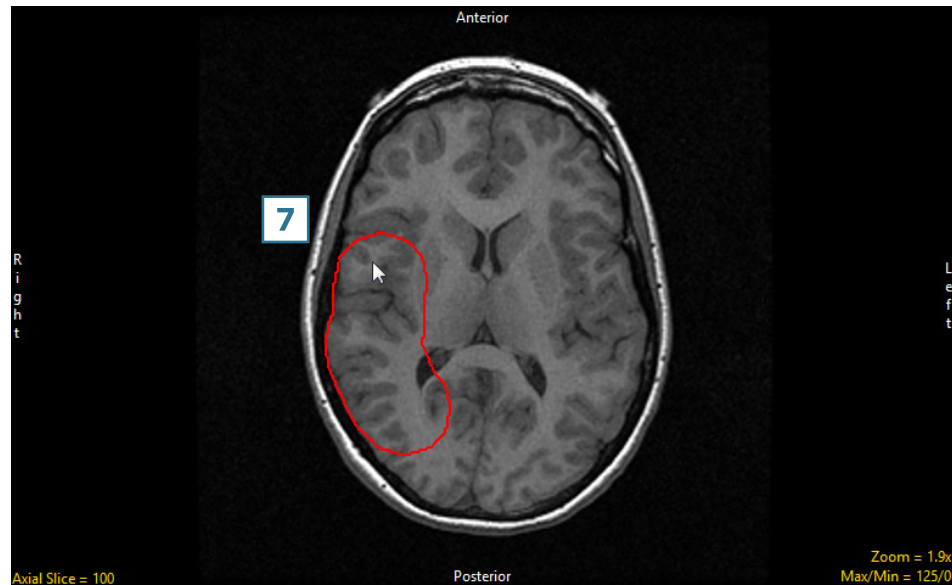
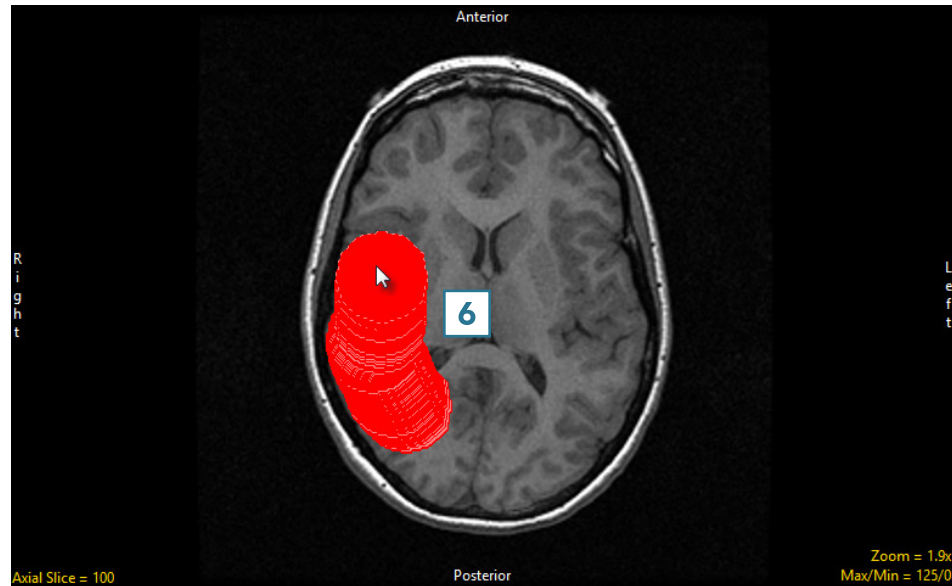
17. Using Freehand Draw to Define a 2D Region

- Select a data set and open Segment.
- Select Manual **1** and choose Freehand Draw. **2**
- Use the Pen Size slider to change the Pen Size to 20. **3**
- The Current Pen **4** will update to the color of the currently selected object. **5**

 Download the EGV_MRI data set to follow along <http://analyzedirect.com/data/>



- Left-click on the image and drag the cursor to trace a region. **6**
- Releasing the left mouse button will end the trace. **7**



Continue to define the brain using the pen tool. **8**

