

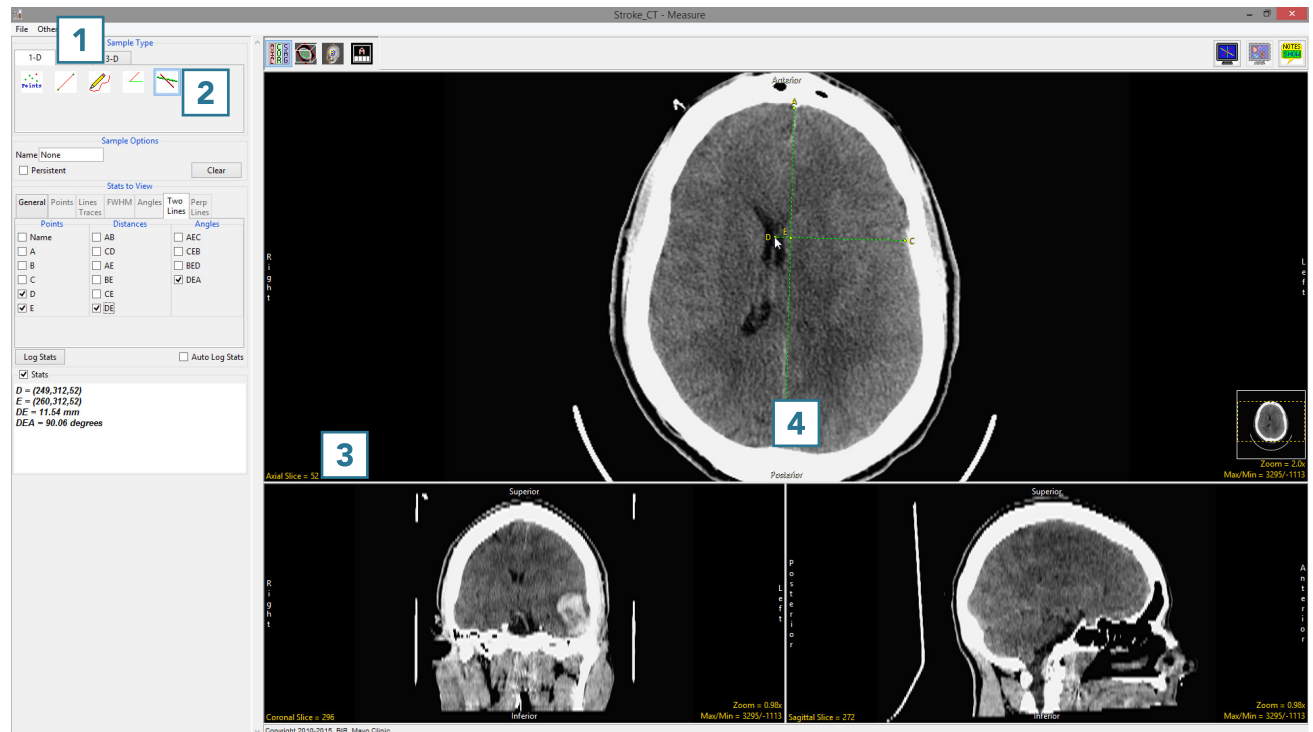
## 7. Making Distance Measurements with the Two Lines Tool

The Sample Two Lines tool provides users with an interactive tool for making line and angle measurements. The tool is useful for applications such as measuring midline shift in stroke CT images.

- Select a data set and open Measure.
- Select the 1D **1** Sample Type and choose Sample Two Lines. **2**
- To measure the displacement of the septum pellucidum from the midline at the level of the foramen of Monro, set the primary display to Axial **3** and find a suitable slice.
- Click on the image to set the first point, A, and drag the end point of the first line, B, to the desired location. This is the midline. **4**



Download the Stroke\_CT data set to follow along <http://analyzedirect.com/data/>



- Once the midline is set, the next line will automatically appear. To define the second line, move point D perpendicular to the midline of the septum pellucidum. **5** Point C may need adjusting to make the second line perpendicular to the first.
- Check the Points, Distances, and any Angles you want to measure. **6** In this example, the midline shift measurement is between point D and point E. Reviewing angle DEA will confirm whether the second line is perpendicular to the first. The angle should be 90 degrees.
- Measurements will be reported in the Stats review area. **7**

