

# 11. Pad/Orient

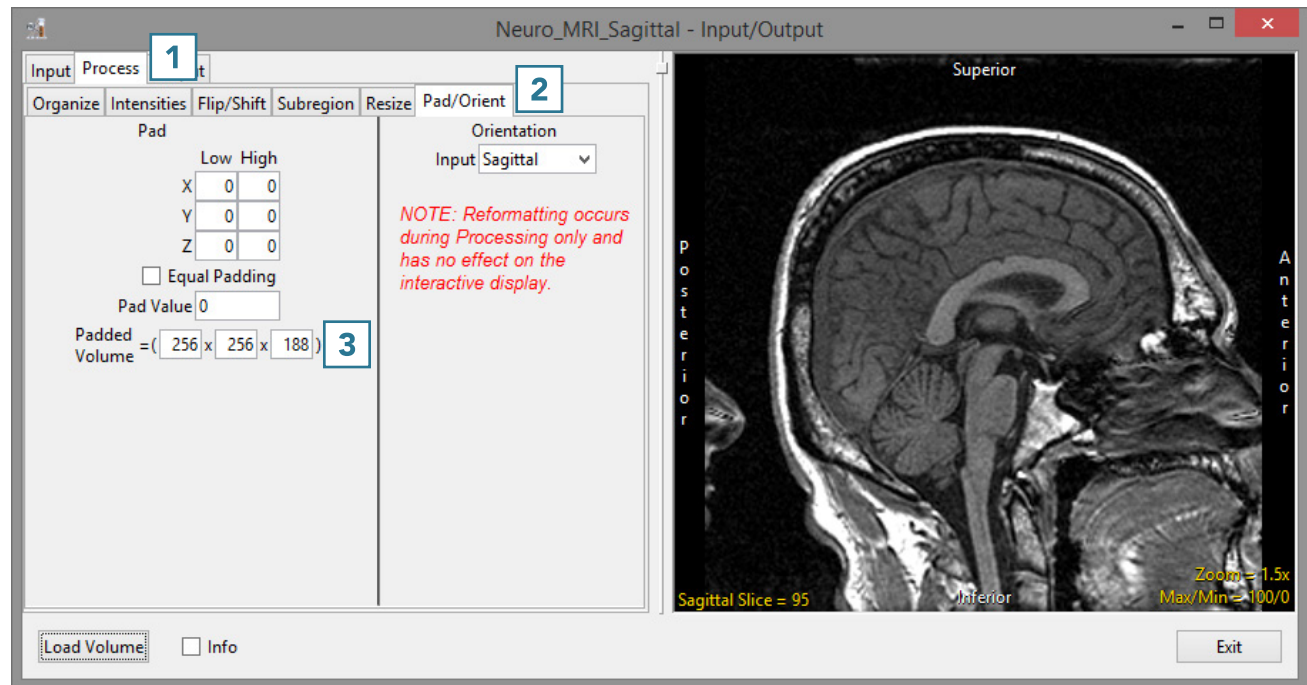
## Padding Data

The Pad/Orient option can be used to pad image data. This may be necessary to create a data set with certain dimensions or to make a data set isovolumetric (equal number of slices in each orientation).

- Open Input/Output.
- Navigate to and select the data set to be padded.
- Select Process **1** and Pad/Orient. **2**
- Note the slice dimensions for the data are reported in the Padded Volume fields. **3**



Download the Neuro\_MRI\_Sagittal data set to follow along <http://analyzedirect.com/data/>



- To make the data set isovolumetric, update the appropriate Padded Volume field. **4** The Pad tool will try to apply an equal number of slices to pad the data in the pad axis. **5**
- Users can also choose to pad all slices to either the Low or High field for the appropriate axis. **4**
- Click Load Volume **6** to load the data.

