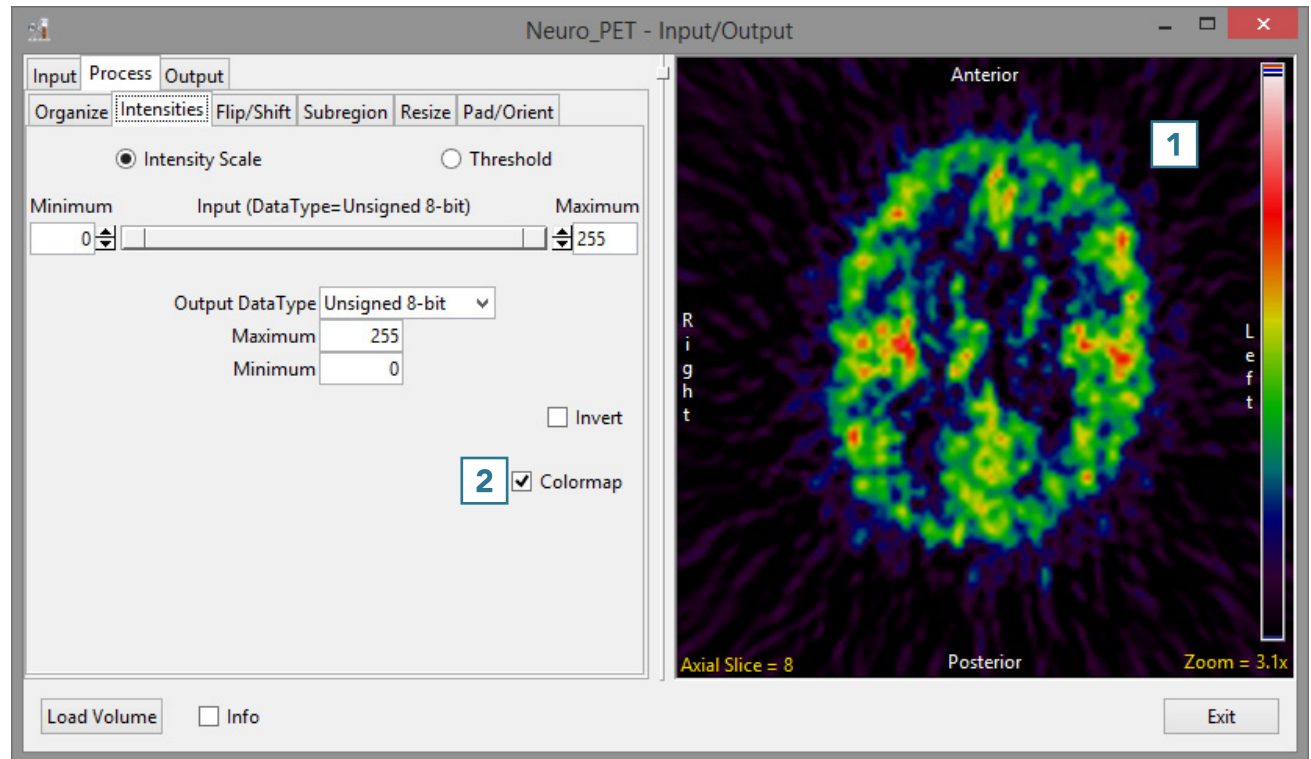


Colormaps

When loading a data set that has an associated colormap, **1** the Colormap checkbox will be selected. **2**



Download the Neuro_PET data set to follow along <http://analyzedirect.com/data/>



- To load the grayscale data without the associated .lkup colormap file, uncheck the Colormap checkbox. **3**

Note that the image display will update to show the grayscale data. **4**

- To load the data, click Load Volume. **5**

