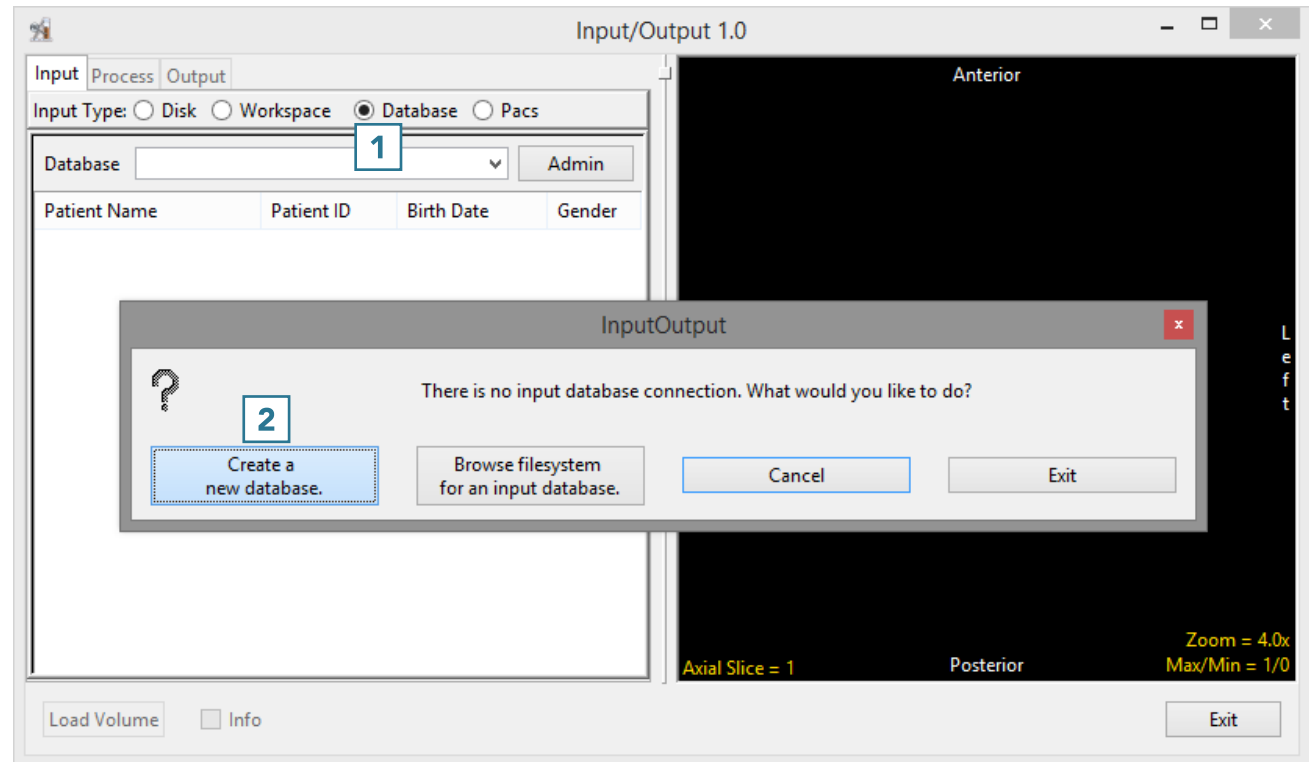


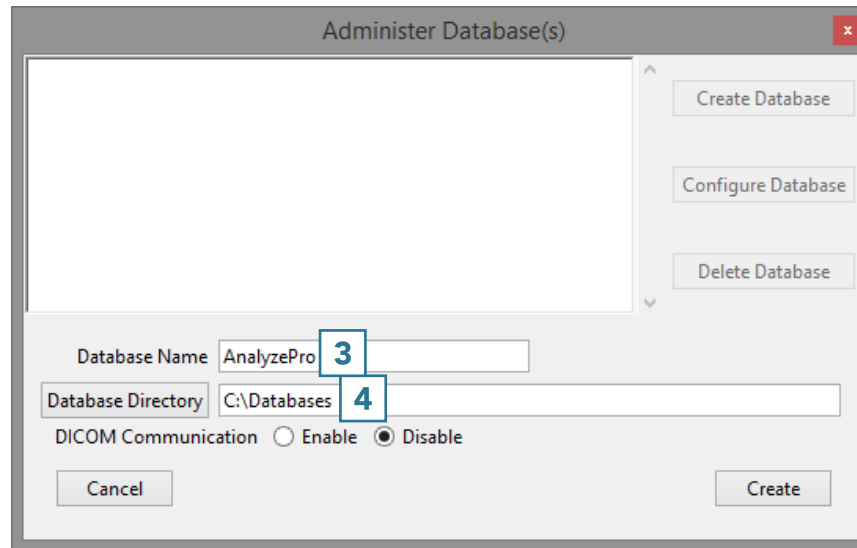
### 3. Importing DICOM Data

#### Creating a Database

- Open Input/Output.
- Set Input Type to Database. **1**
- The first time the Database option is selected, a window will be displayed, asking: 'There is no input database connection. What would you like to do?'
- Select Create a new database. **2**



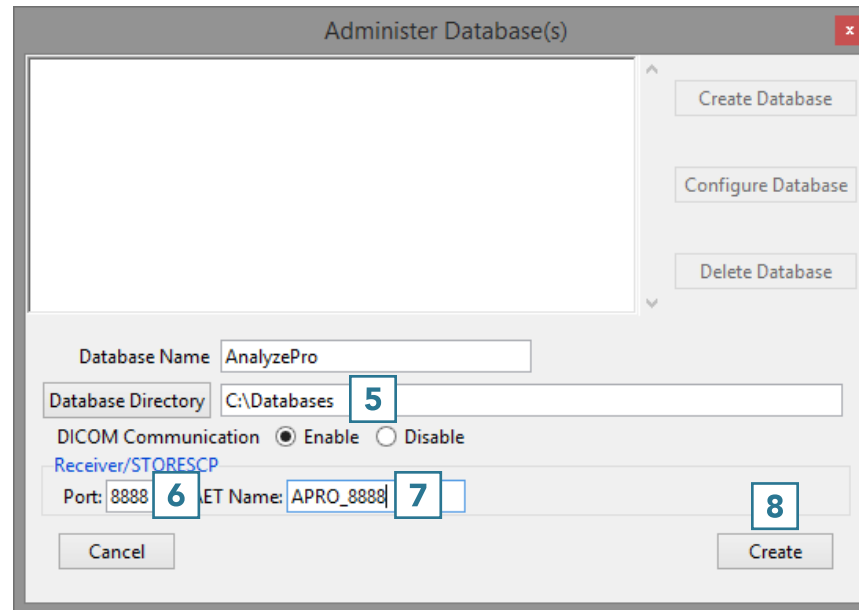
- The Administer Database(s) window will open.
- Name the database **3** and set the location where the database will be saved. **4**



### Enabling DICOM Communications (optional)

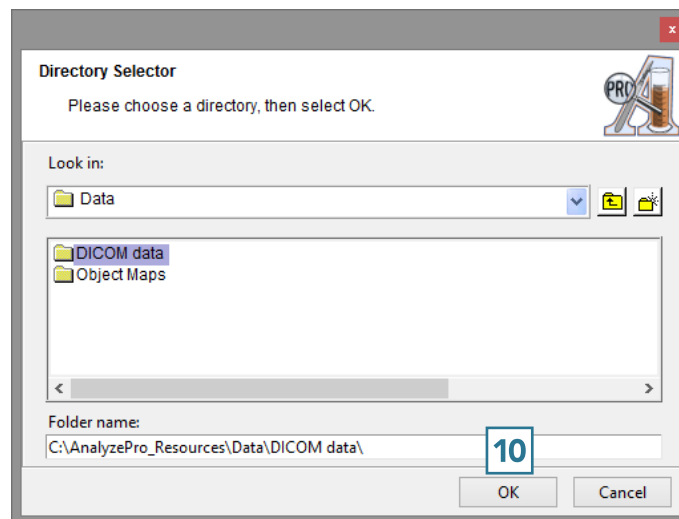
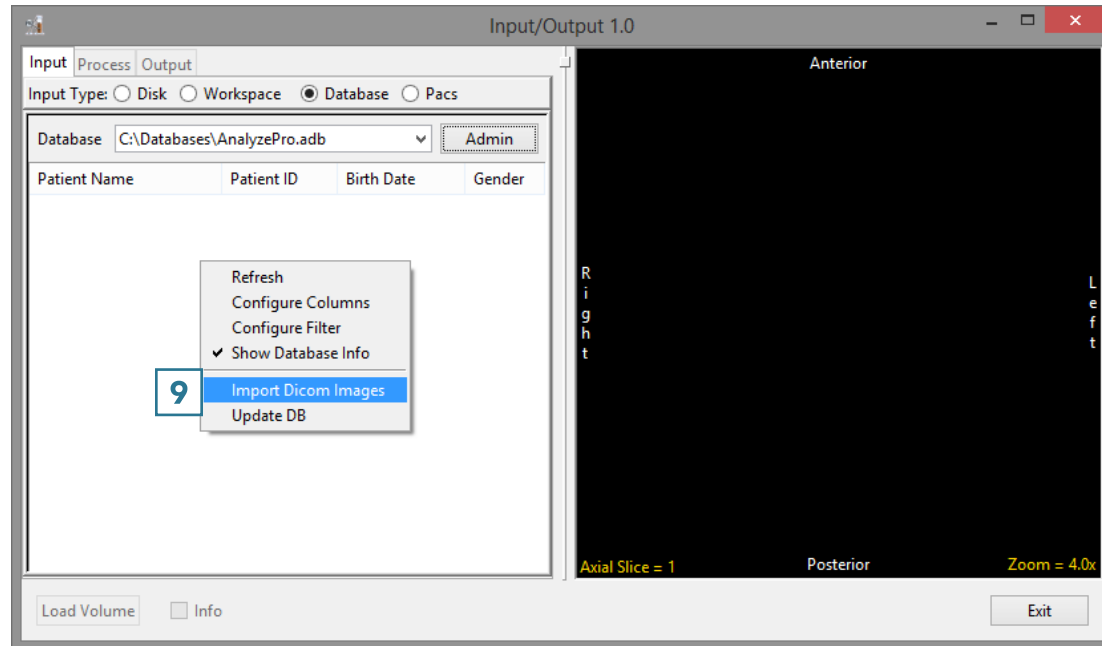
Setting up a receiver for the database will allow DICOM image data to be pushed from a PACS server to AnalyzePro. To set up a DICOM receiver:

- Set the DICOM Communication to Enable. **5**
- Set the Port number **6** and Application Entity Title (AET) Name. **7**
  - Note that the AET Name should not go over 16 alphanumeric characters.
  - Make a note of the Port number and AET Name. Your PACS administrator will need this information along with the systems IP address to configure DICOM push from PACS.
- Click Create. **8**



### Importing Images

- Right-click in the window and select Import DICOM Images. **9**
- Use the Directory Selector to navigate to the location of the DICOM images to import and click OK. **10**



- A window will open stating Import all DICOM files found below <the specified folder>; click Yes. **11**
- Once import is complete, the image data will be available in the database.
- To load a data set into AnalyzePro, select a data set and then click Load Volume. **12**

