

### Correcting an Orientation Flag

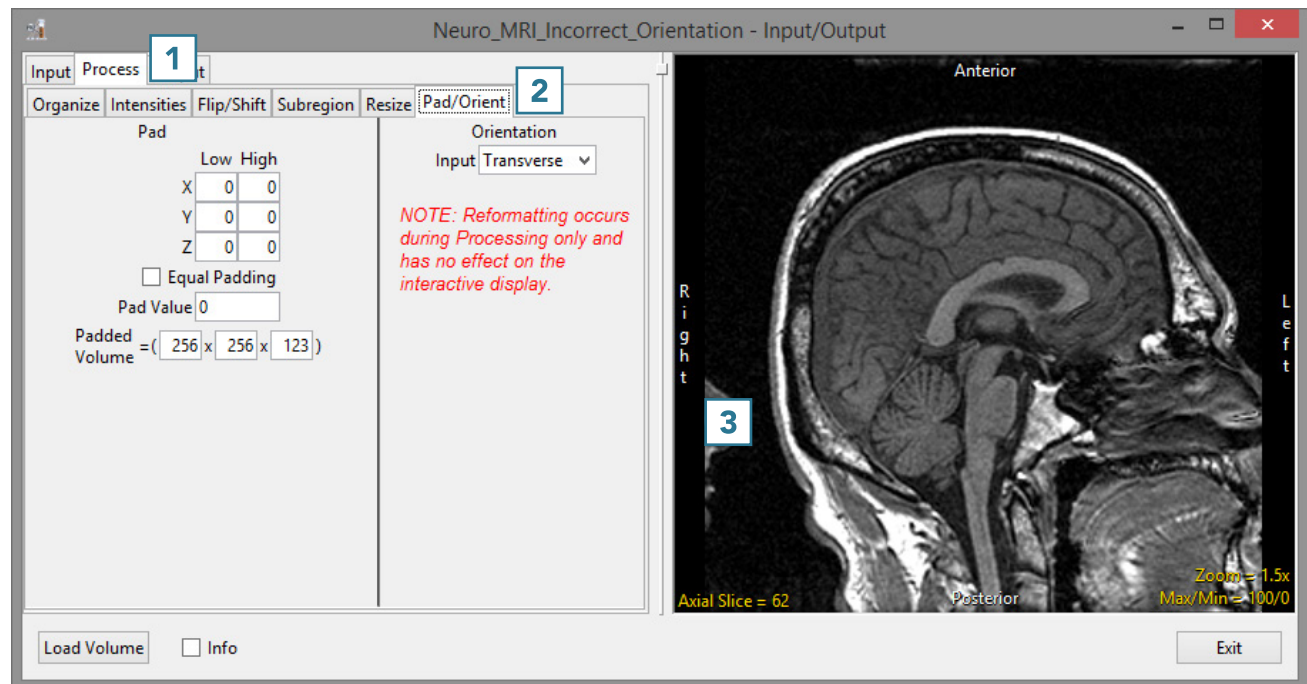
If a data set is loaded with an incorrect orientation flag, it will not orient correctly in other AnalyzePro modules. The Orientation option can be used to correct this.

- Open Input/Output.
- Navigate to and select the data set to be padded.
- Select Process **1** and Pad/Orient. **2**

Note that the orientation of this sagittally-acquired data set is marked as axial. **3**



Download the Neuro\_MRI\_Incorrect\_Orientation data set to follow along <http://analyzedirect.com/data/>



- To correct this, set the Orientation Input option to Sagittal. **4**
- Note that the axis labels in the preview are corrected. **5**
- Click Load Volume **6** to load the data.

