

# Register

**3D Surface Alignment** page 353

**3D Mutual Information** page 356

Automatic Registration page 357

Manual Registration page 363



# 3D Surface Alignment

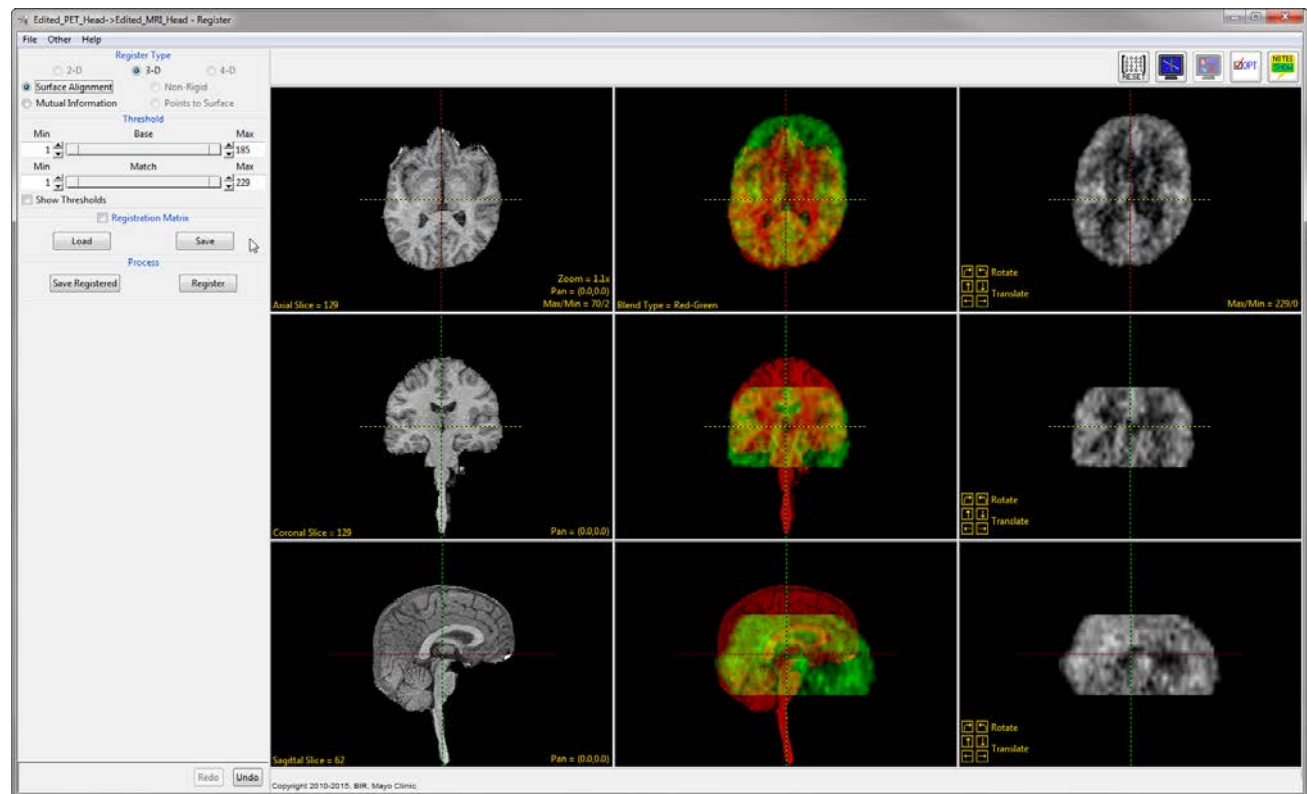
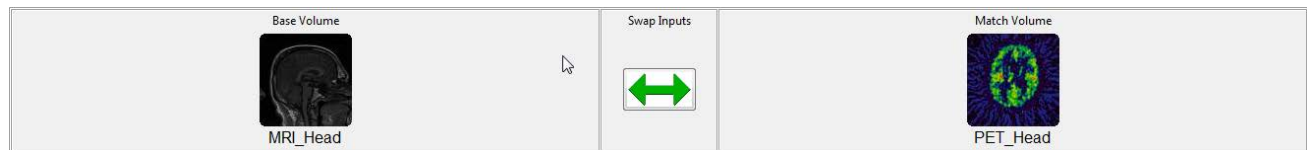
Surface matching is fast and robust, even in the presence of image noise and incomplete overlap of the image volumes. Both volumes must contain common objects, which must be explicitly segmented from the grayscale image data and saved as a grayscale or binary image. A surface is extracted from both a base object and a match object that are preprocessed from the base volume and match volume, respectively. This exercise will demonstrate how to achieve an optimal registration of two 3D volumes based on corresponding surfaces.

- Select the first data set (Edited\_MRI\_Head.avw), then while holding down the <Ctrl> key, select the second data set (Edited\_PET\_Head.avw).

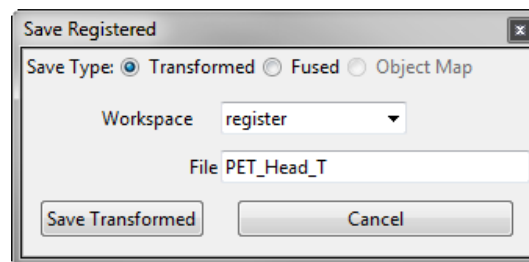
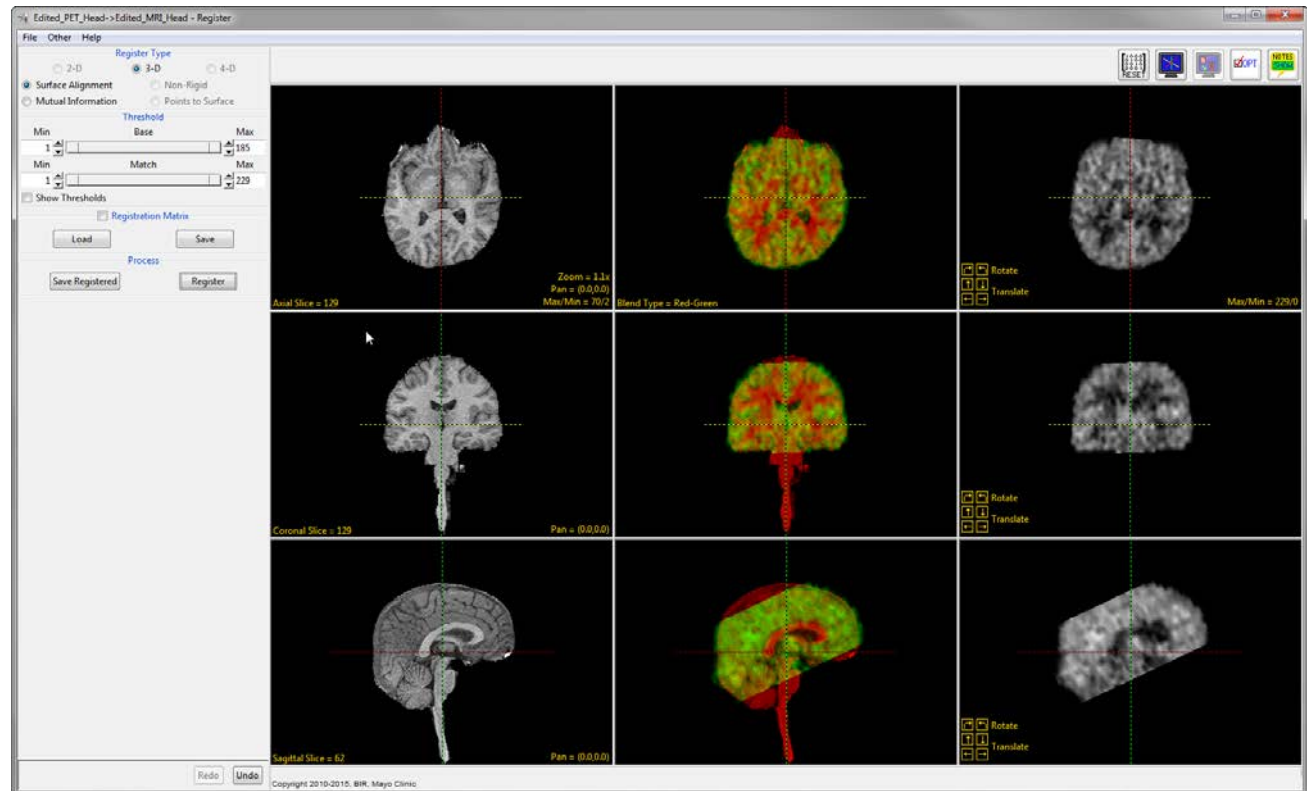
Note that these data sets have been pre-segmented to common surfaces, in this case, the brain.

- Open Register.
- Select File > Input/Output Ports to view the input and output ports at the bottom of the main Register window. Make sure that Edited\_MRI\_Head is the base volume, and Edited\_PET\_Head is the match volume.
- Select 3D and Surface Alignment from the Register Type options.

 Download the Edited\_MRI\_Head and Edited\_PET\_Head data sets to follow along <http://analyzedirect.com/data/>



- The interface contains nine image display panes.
  - First Column: Displays the Base volume.
  - Last Column: Displays the Match volume pre-scaled to the size of the base volume.
  - Middle Column: Displays the base and match volumes fused together.
  - Rows: Display the volumes in the axial, coronal and sagittal orientations.
- Examine the combined middle column to determine whether the volumes need to be registered.
- Click Register to register the two volumes.
- Click Save Registered to export the transformed PET data.
- Select the Transformed Save Type, Workspace, File and select Save Transformed.





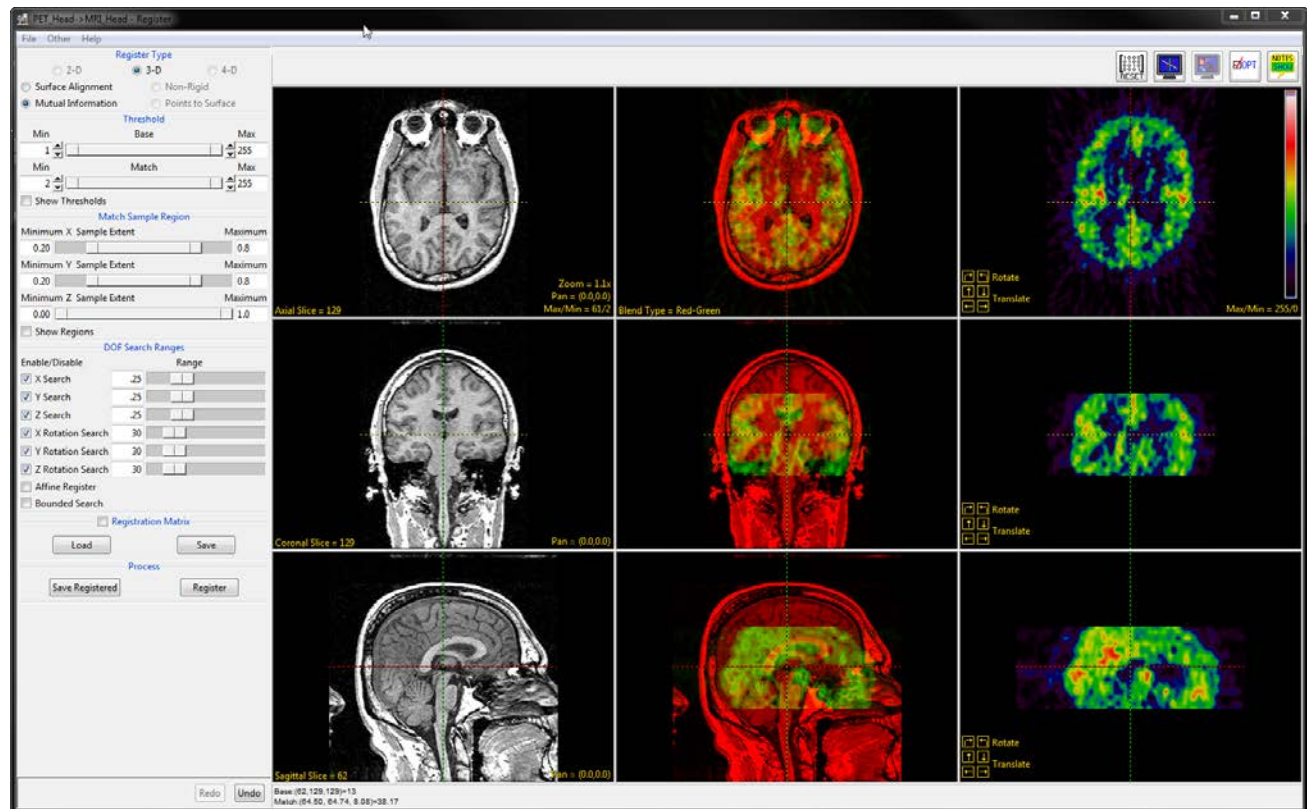
# 3D Mutual Information

The Mutual Information Register Type is an implementation of the Normalized Mutual Information algorithm and allows users to spatially register two volume images. Several unique and powerful algorithms allow the precise alignment of 3D data to be achieved, both quickly and efficiently. This exercise will demonstrate how to register two images of different modalities.

## Automatic Registration

- Select the first data set (MRI\_Head.avw), and while holding down the <Ctrl> key, select the second data set (PET\_Head.avw).
- Open Register.

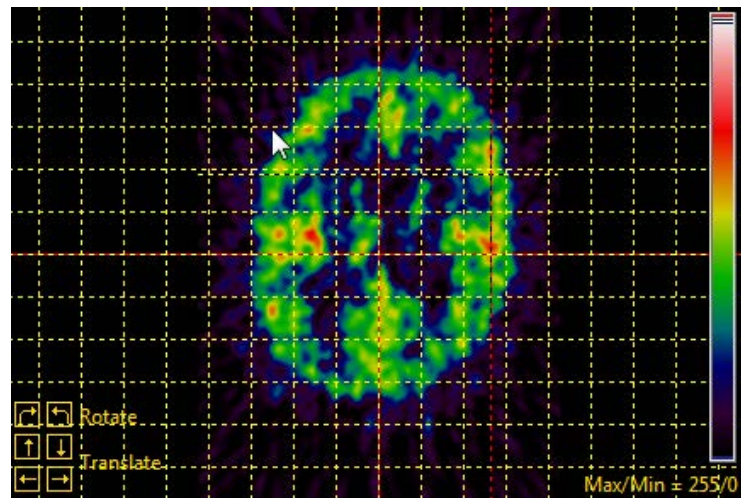
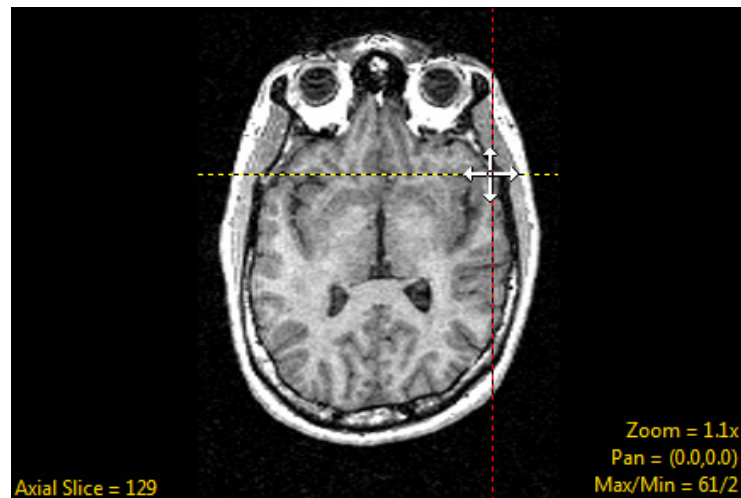
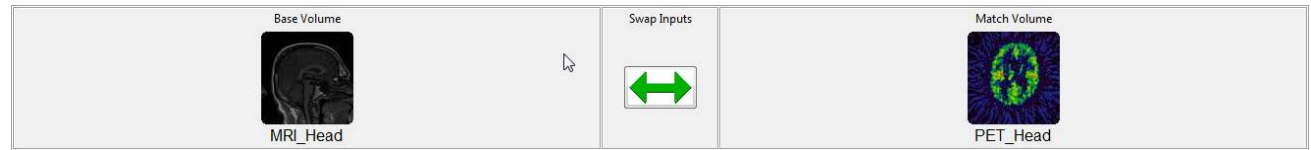
 Download the MRI\_Head and PET\_Head data sets to follow along <http://analyzedirect.com/data/>



- Select File > Input/Output Ports to view the input and output ports at the bottom of the Register window. Make sure that MRI\_Head is the base volume, and PET\_Head is the match volume.
- The crosshair in each of the image display panes can be used to move through the volumes. When the crosshair is moved in any of the panes, the other panes automatically update to display the same volume coordinate.

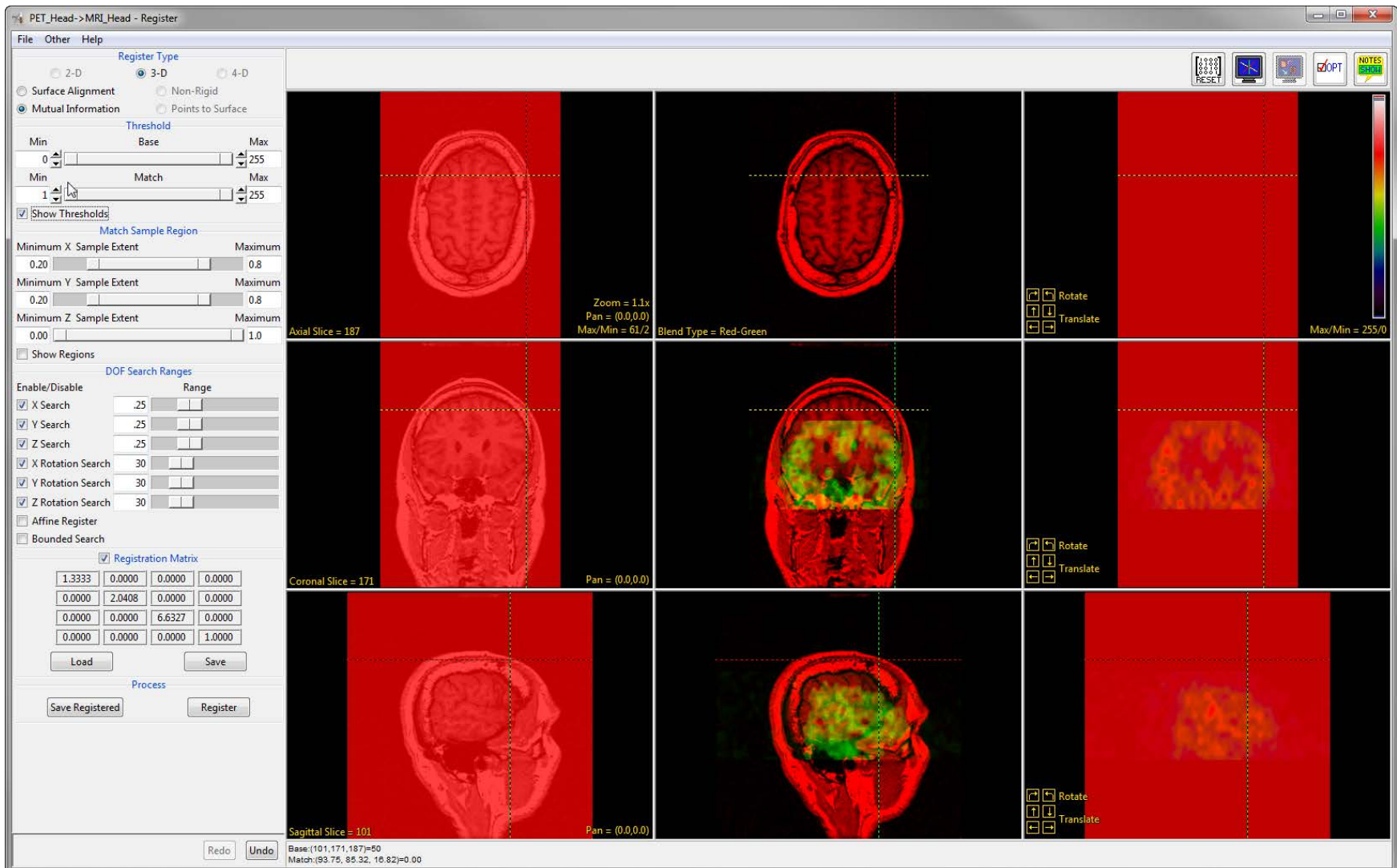
Note that the base and match coordinates are reported at the bottom of the window.

- Right-click on any of the image display panes in the last column to view several options such as adding an alignment grid.



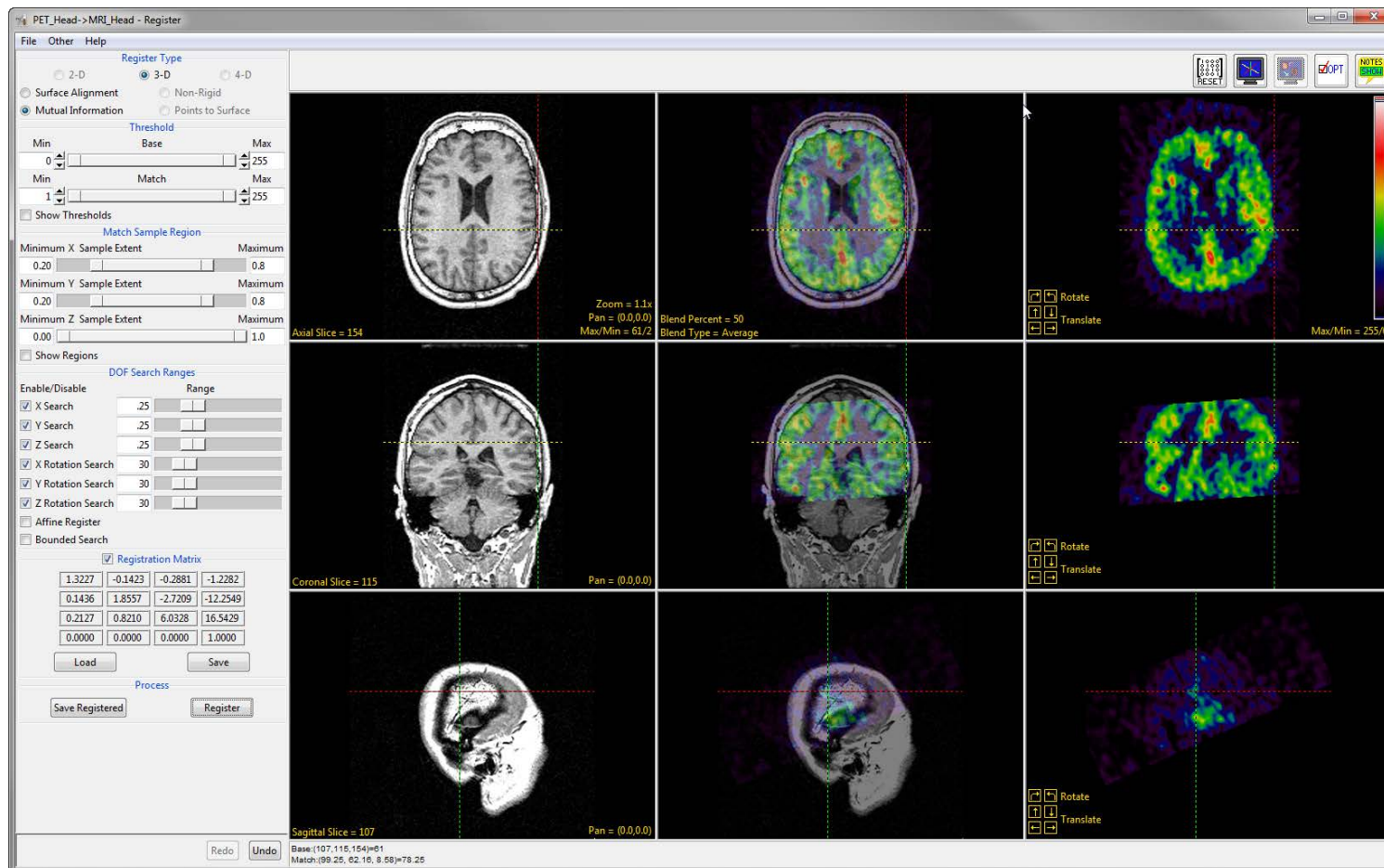


- On the left tool bar under Threshold, check the Show Thresholds option and the image display will show a red overlay representing all voxels that will be considered for the registration. Set the Base Minimum to 0 and the Match Minimum to 1.





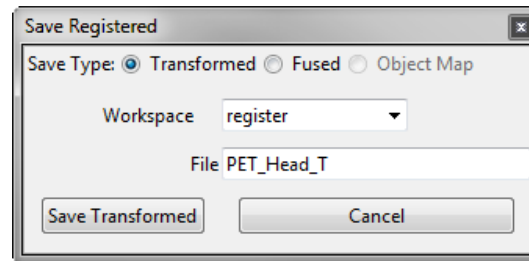
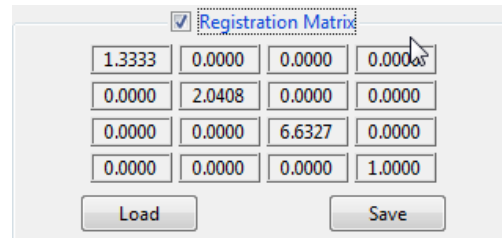
- Click the Register button.
- After registration is complete, you will see that the PET volume has been scaled, rotated and translated to match the sagittal MRI. Uncheck the Show Thresholds checkbox.
- Right-click the Blend Type yellow text in the middle upper panel and select Average.
- To evaluate the registration, move the crosshair in any of the panes.



- If the registration is not satisfactory, you can choose to undo the last action using the Undo button at the bottom of the left tool bar.



- If you want to reset the data back to the original matrix, use the Reset button in the top right of the register window.
- To view the current transformation matrix, select the Registration Matrix box on the left tool bar. This gives the option to save the current matrix as an ASCII floating-point file or load a previously saved matrix.
- To save a copy of the transformed or fused match volume (PET\_Head), click Save Registered. Select the Transformed Save Type, Workspace, File and select Save Transformed.



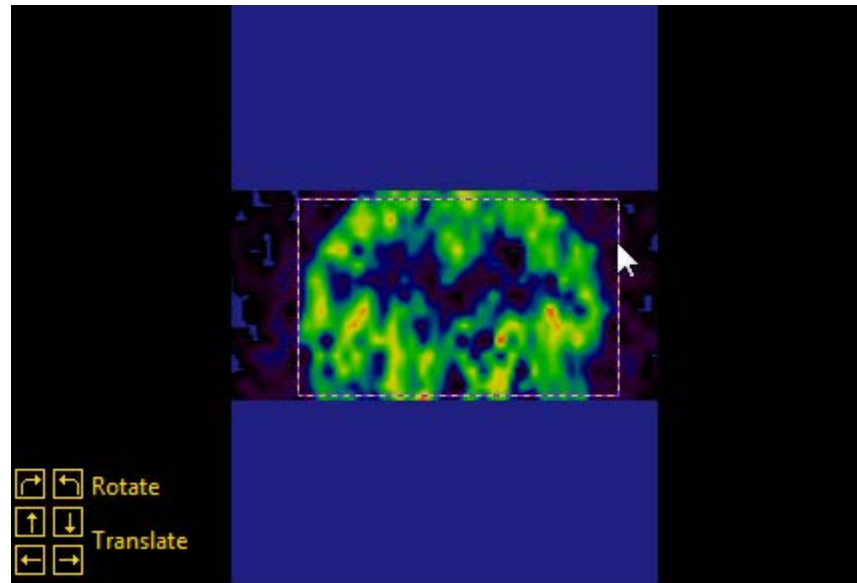


AnalyzePro also provides the ability to set a Match Sample Region and DOF Search Ranges.

Match Sample Region provides X, Y and Z sample extent sliders that define a specific spatial region used for registration. A dotted boundary line will appear on the right match image column.

The default region is optimal for MRI and CT volume images of the head. This tool can be useful for excluding excessive background or concentrating the registration on a specific region of interest.

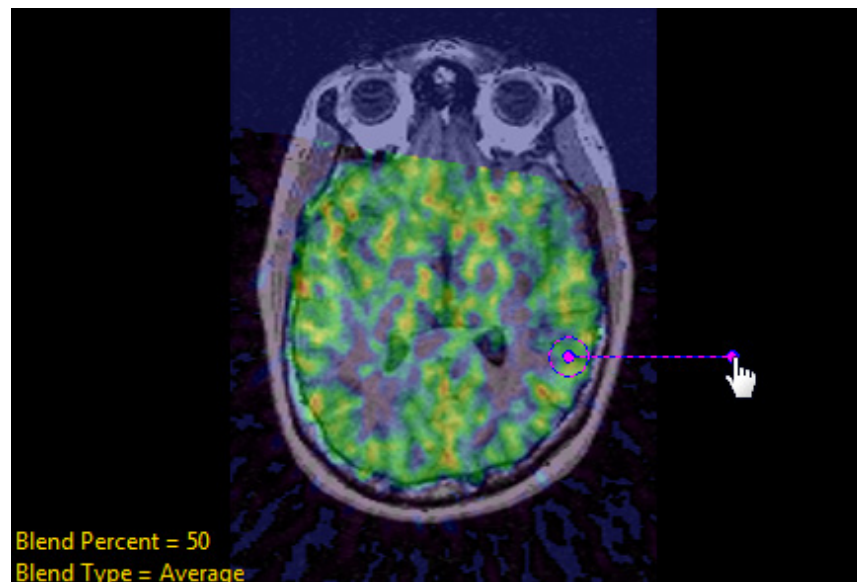
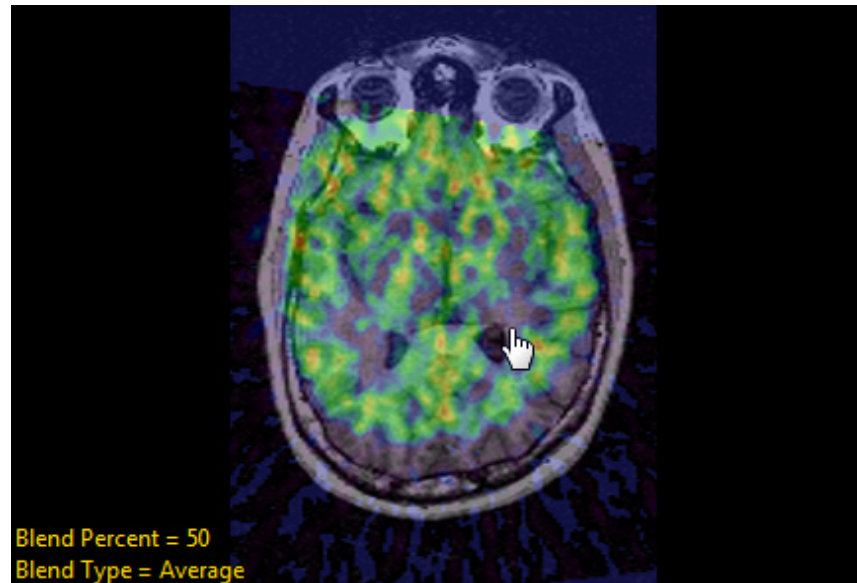
DOF Search Ranges allow you to set the number of degrees of freedom. Clicking the Affine Register checkbox enables the scale and shear transformations for a fully affine transform.



## Manual Registration

The Manual Registration controls provide the ability for users to manually register the match to the base volume. The left mouse button can be used to interactively translate the image within the middle fused and right match columns.

Interactive rotation of the image can be done by selecting the right mouse button menu and setting the middle mouse button action to rotation via the Rotate @ Point option. You can then hold the middle mouse button and a rotation control point will appear.





Rotation and Translation buttons are also present in the right match column. These buttons can be used for precise movements. The default increment is set to 1 but can be changed by right-clicking the control buttons and selecting Increment.

Once satisfied with the manual registration, you can save the registered match volume or invoke one of the automatic registration methods to refine the registration using the manual registration as an initial guess.

